

Station WDCA-ID:GAWCVO
Station GAW-Name:Cape Verde Observatory
Station GAW-ID:CVO
Station latitude:16.8638
Station longitude:-24.8675
Station altitude:10m
Station land use:Volcanic rock

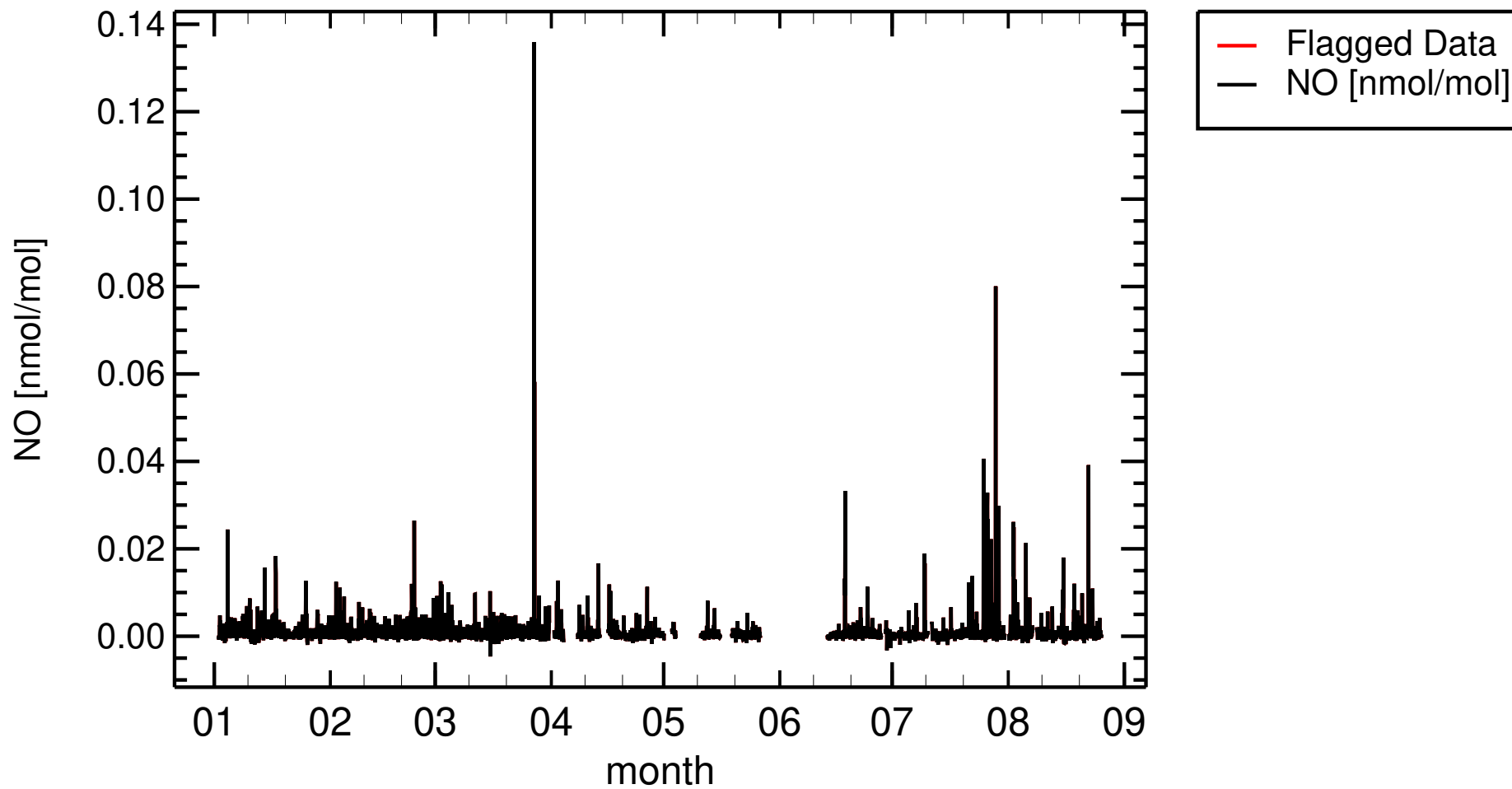
Ozone interference corrected.
No water interference as calibration is done under humid condition
NO Baseline is zero for 2022.



ACTRIS DATA WS 2023/04/19

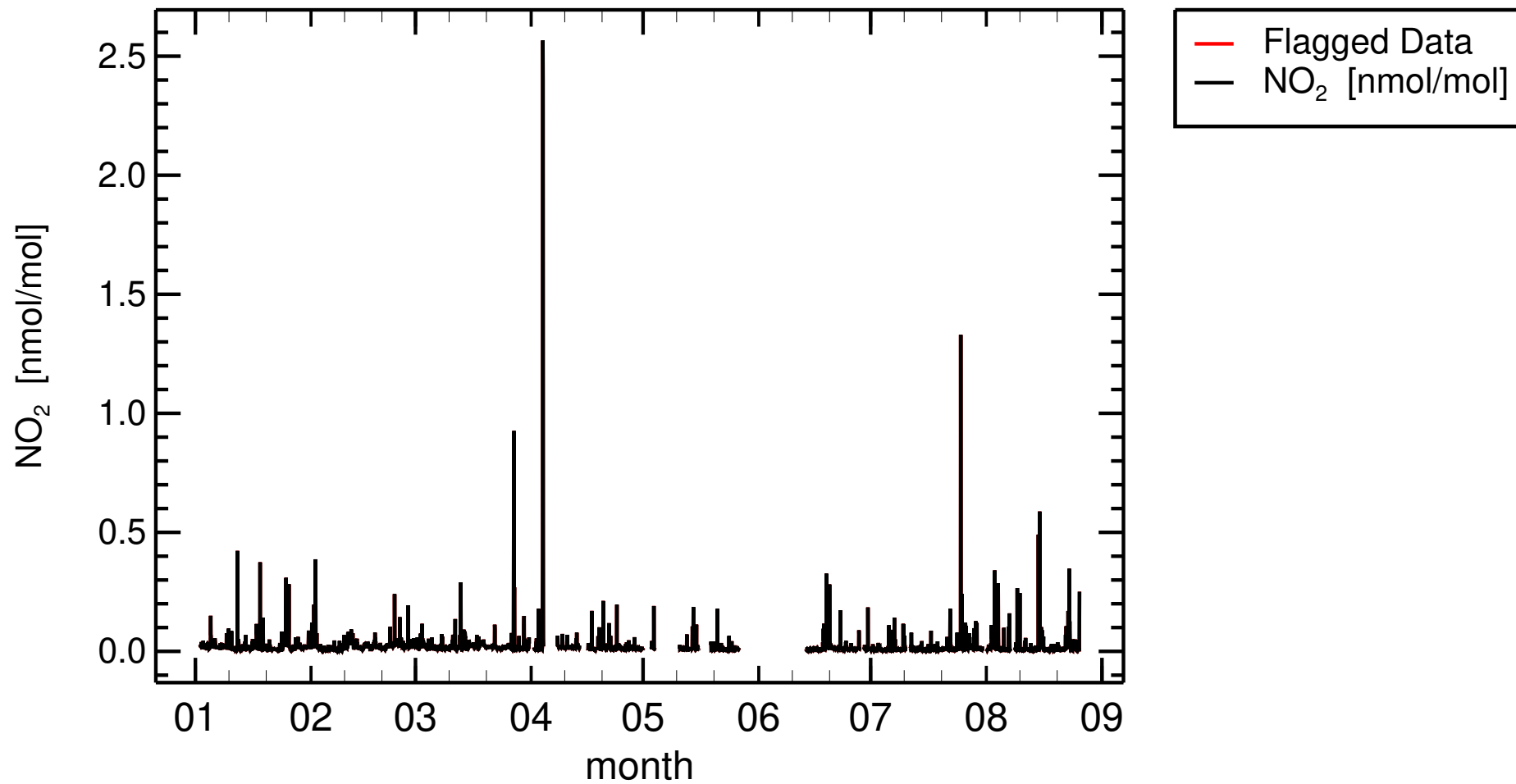
2022

CV0001G , Cape Verde



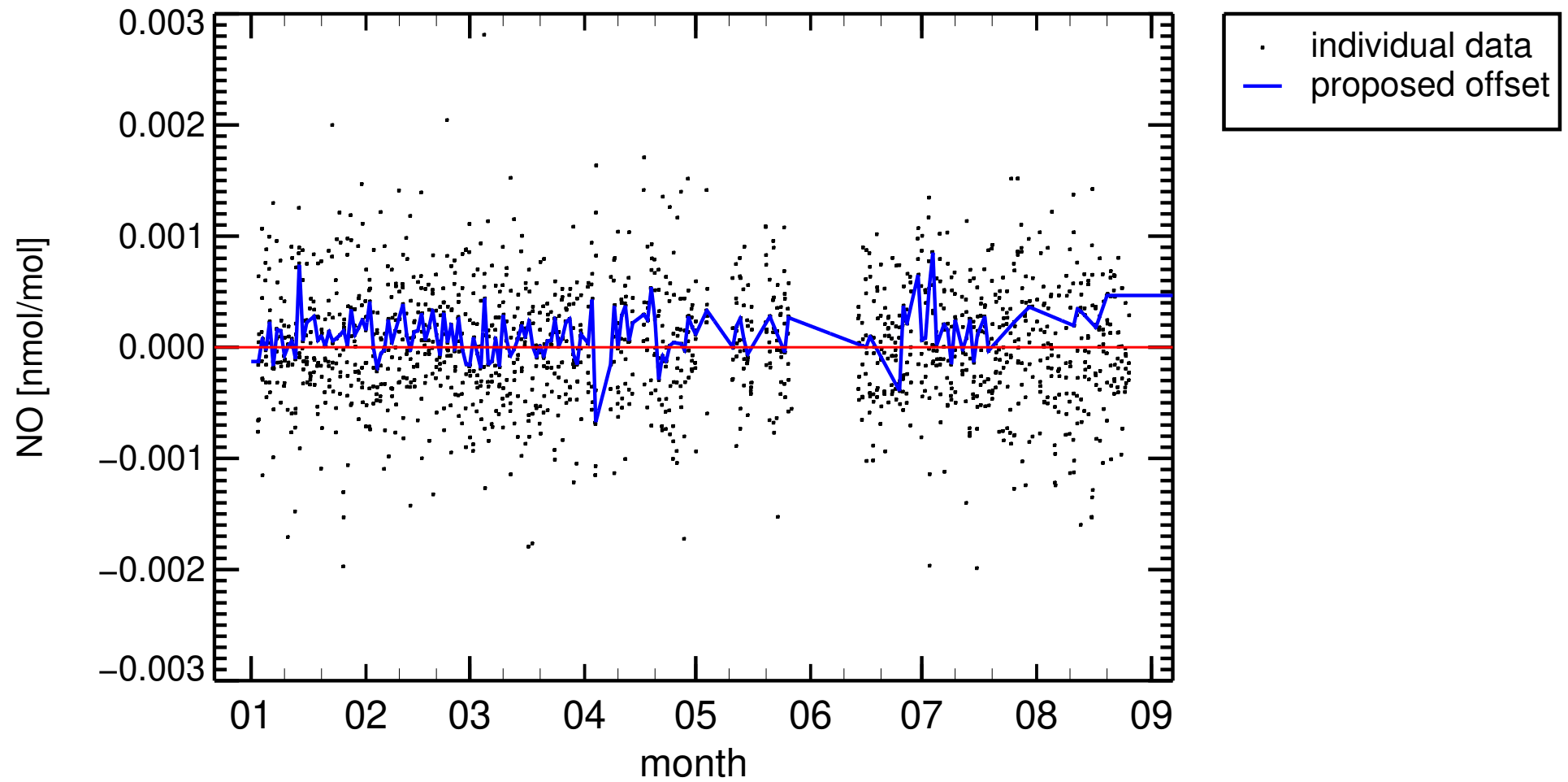
2022

CV0001G , Cape Verde

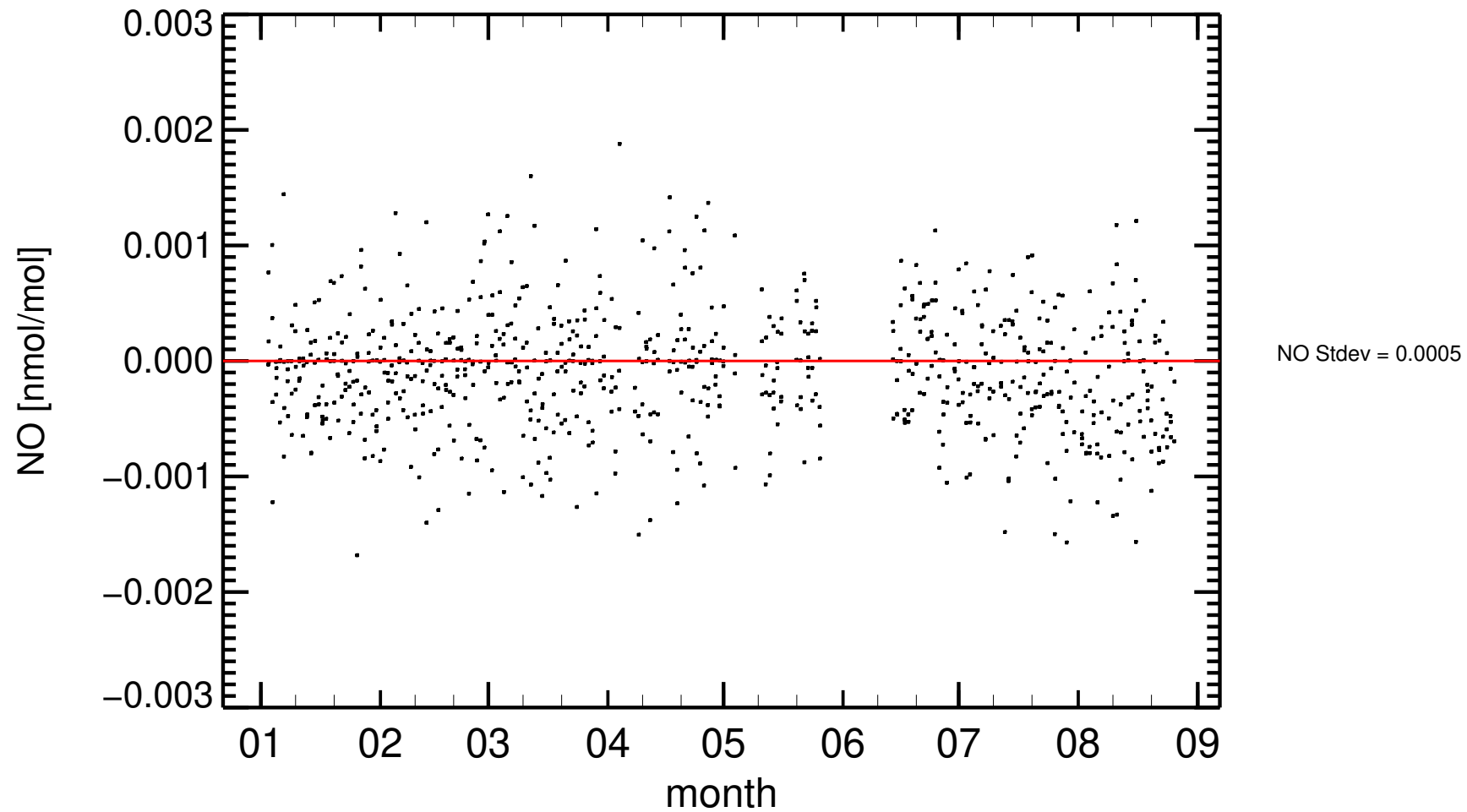


2022

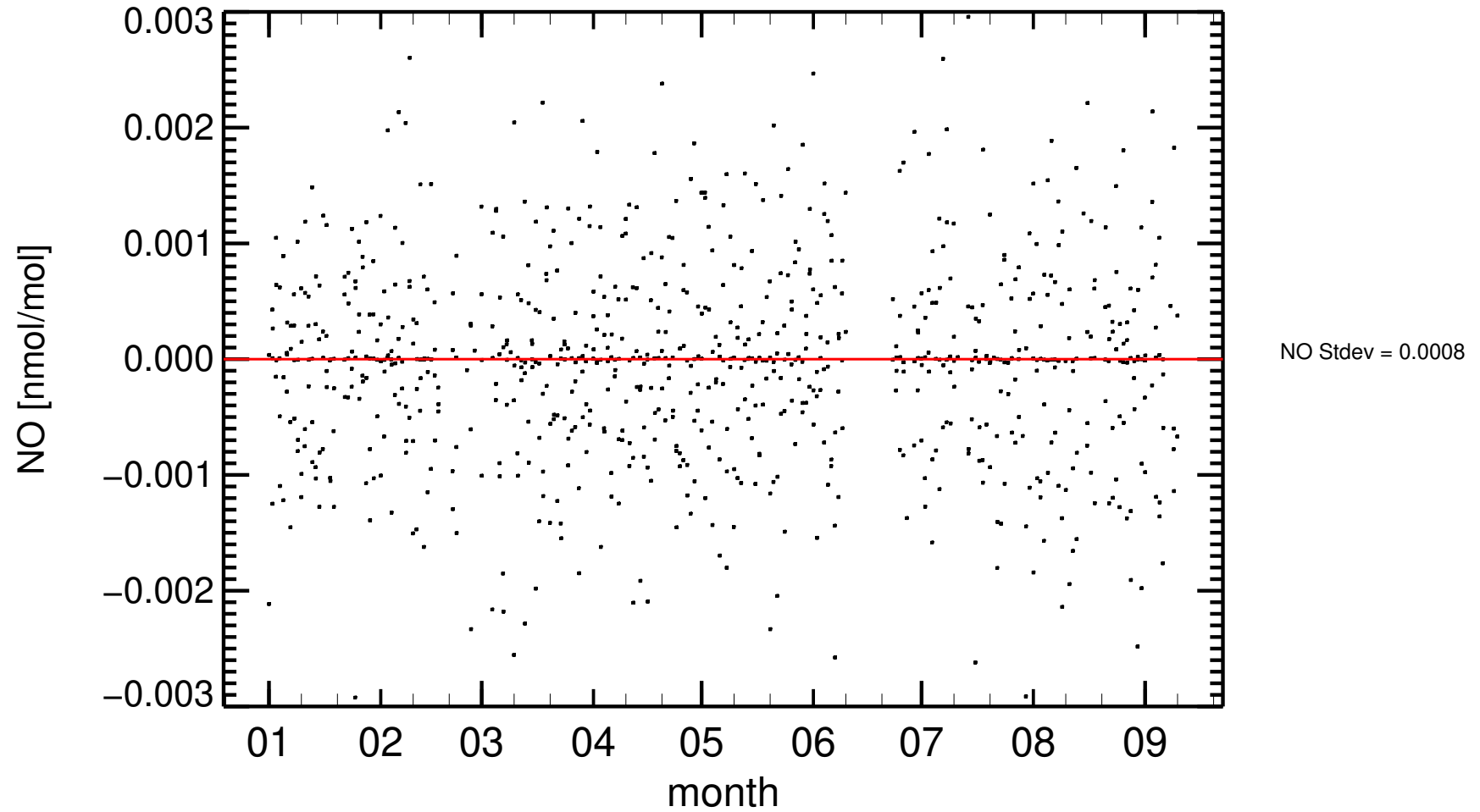
CV0001G , Cape Verde



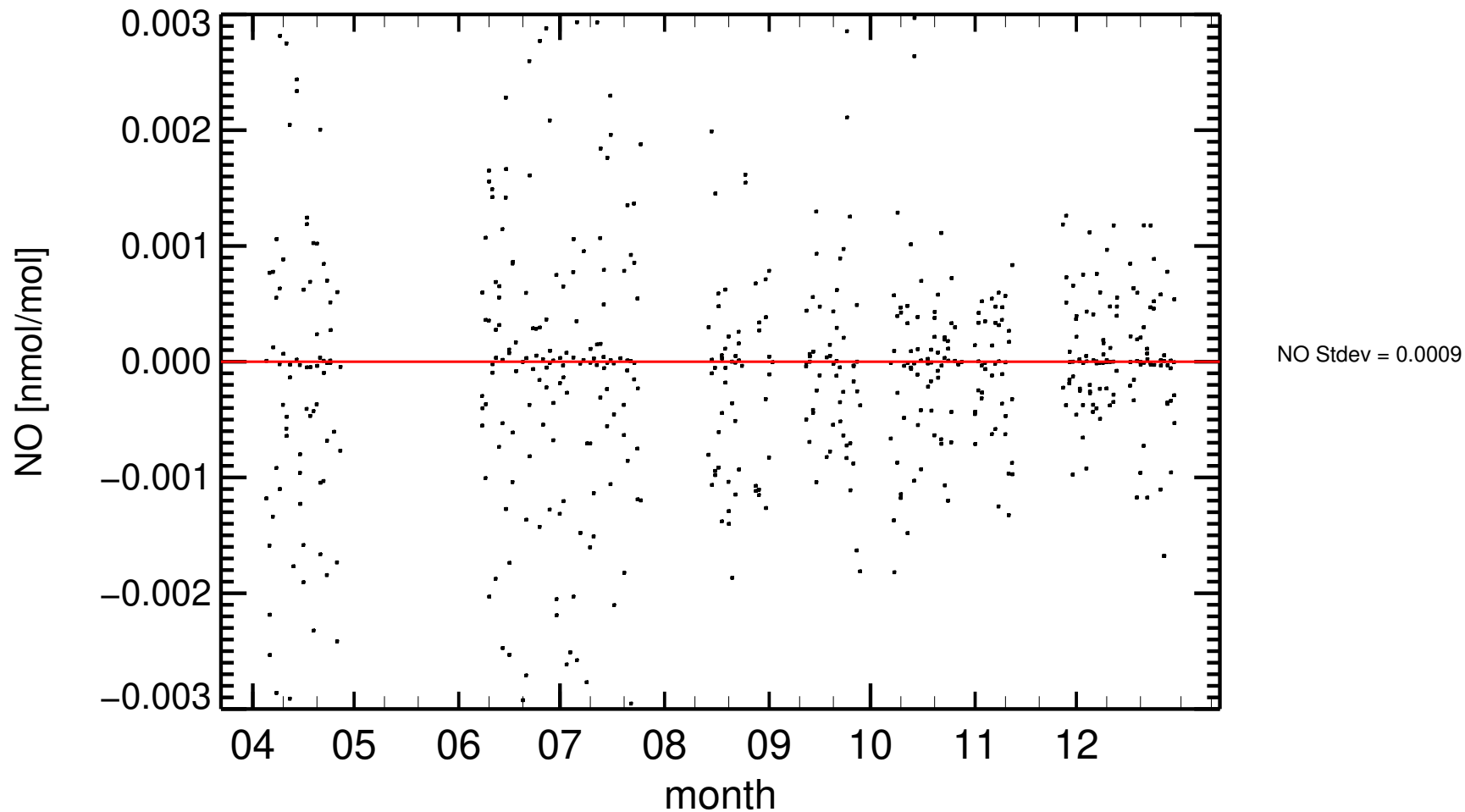
2022 , 22:00–02:00 only
CV0001G , Cape Verde (rev.)



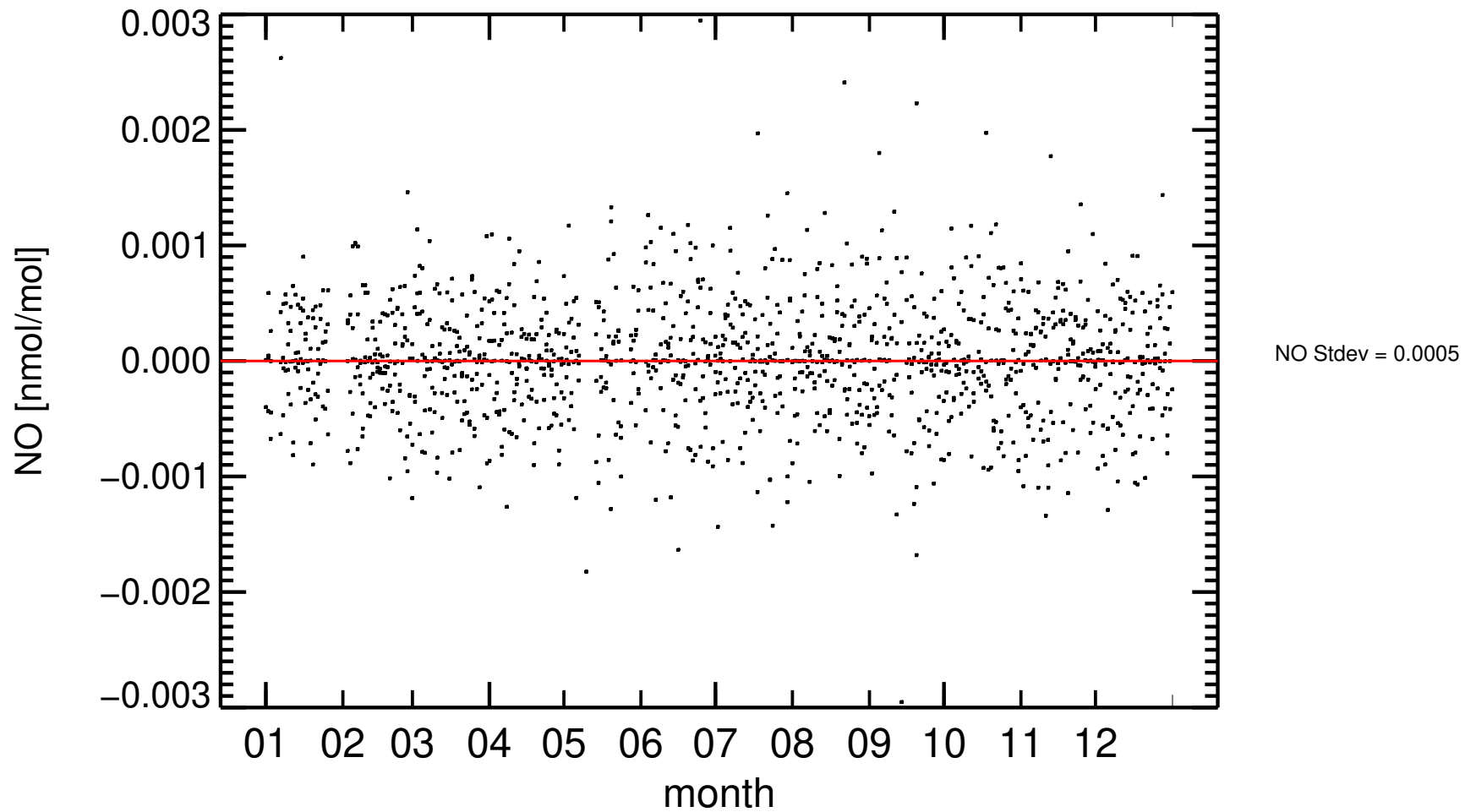
2018 , 22:00–02:00 only
CV0001G , Cape Verde Observatory (rev.)



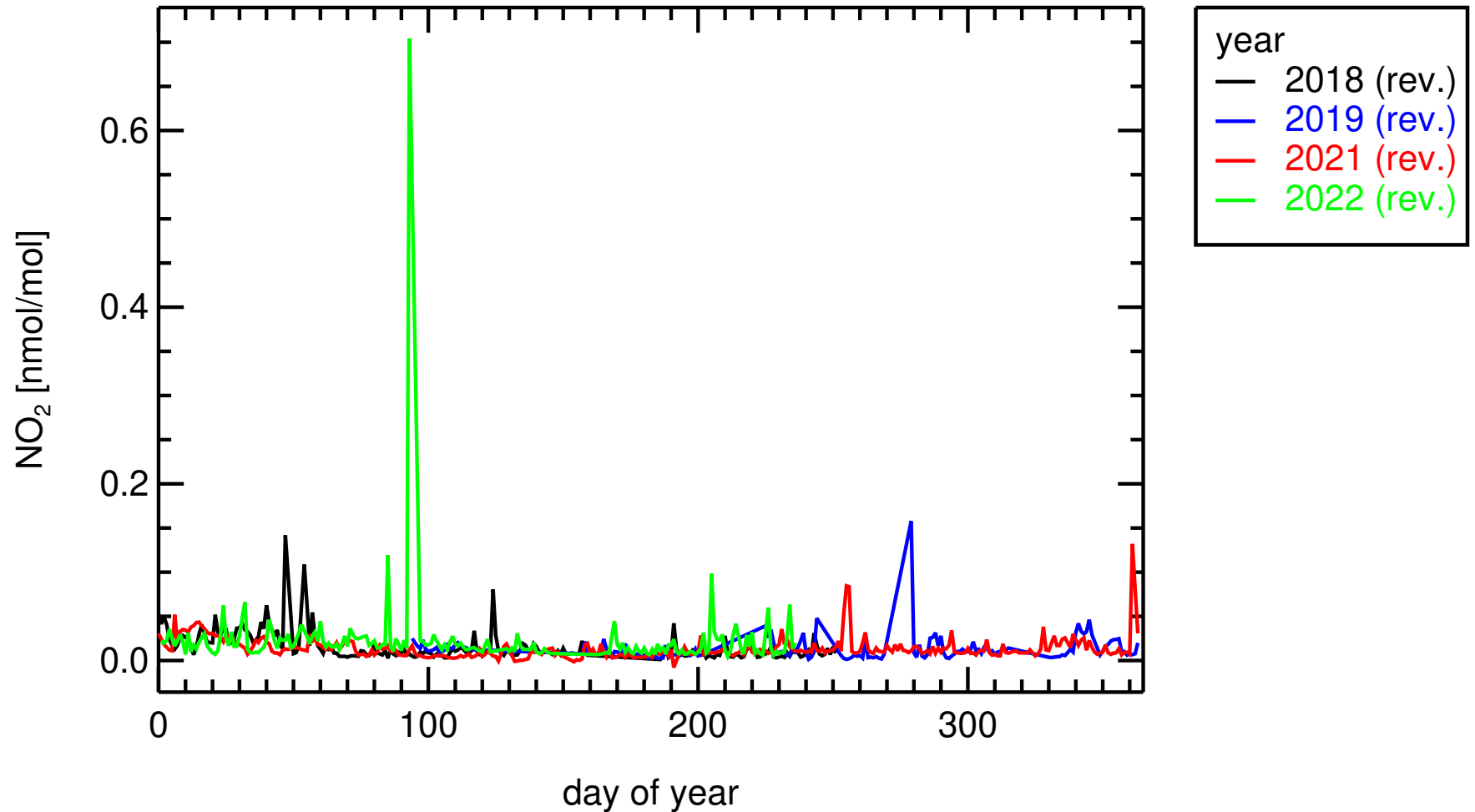
2019 , 22:00–02:00 only
CV0001G , Cape Verde Observatory (rev.)



2021 , 22:00–02:00 only
CV0001G , Cape Verde Observatory (rev.)

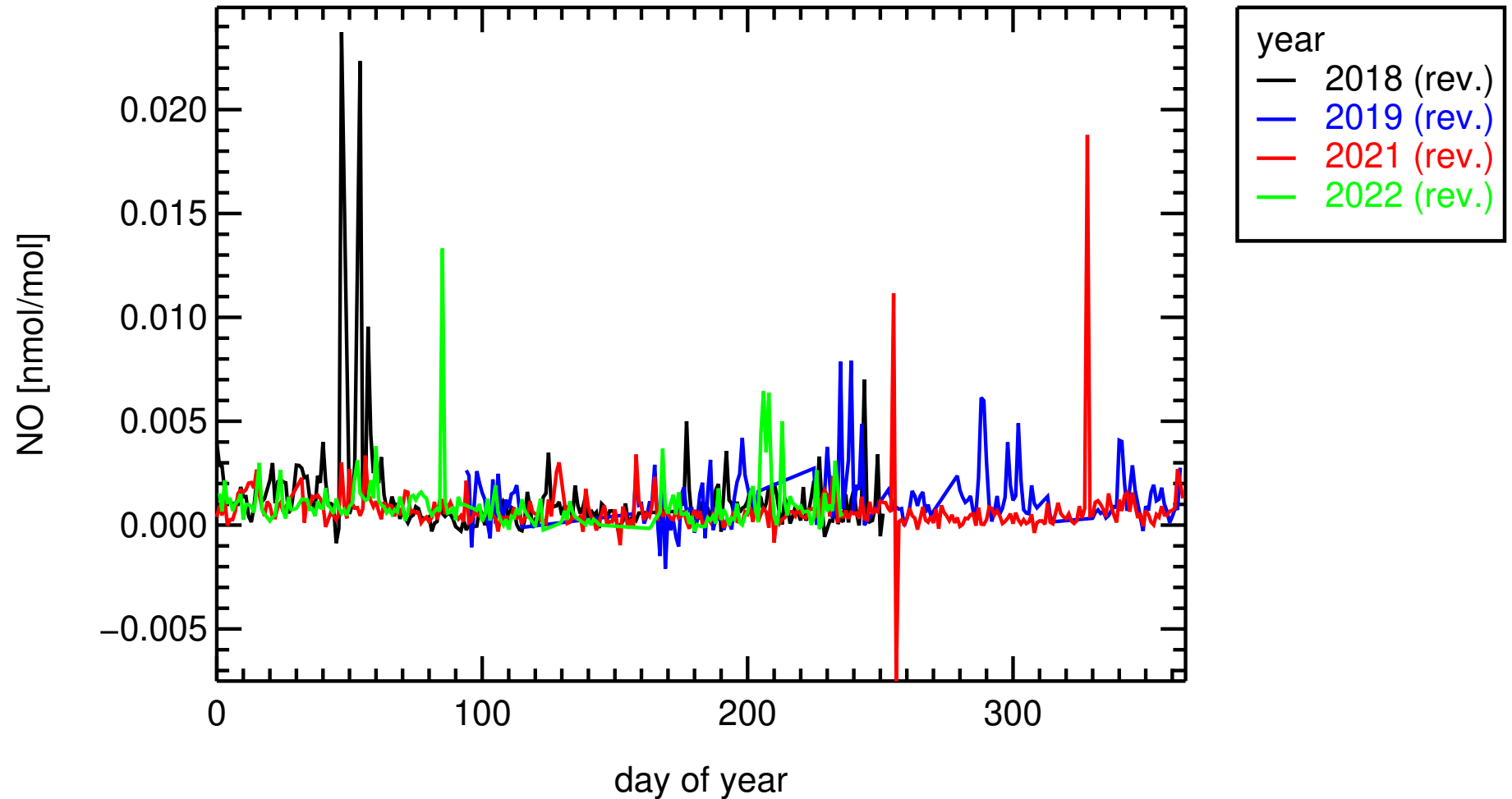


daily averages
CV0001G , Cape Verde Observatory



nitrogen_dioxide, nmol/mol MEAN = 0.0213 nmol/mol

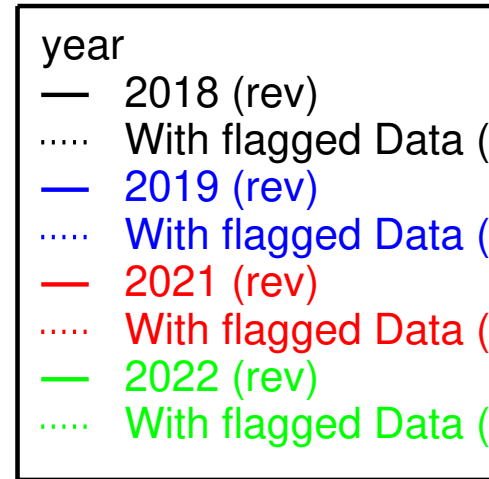
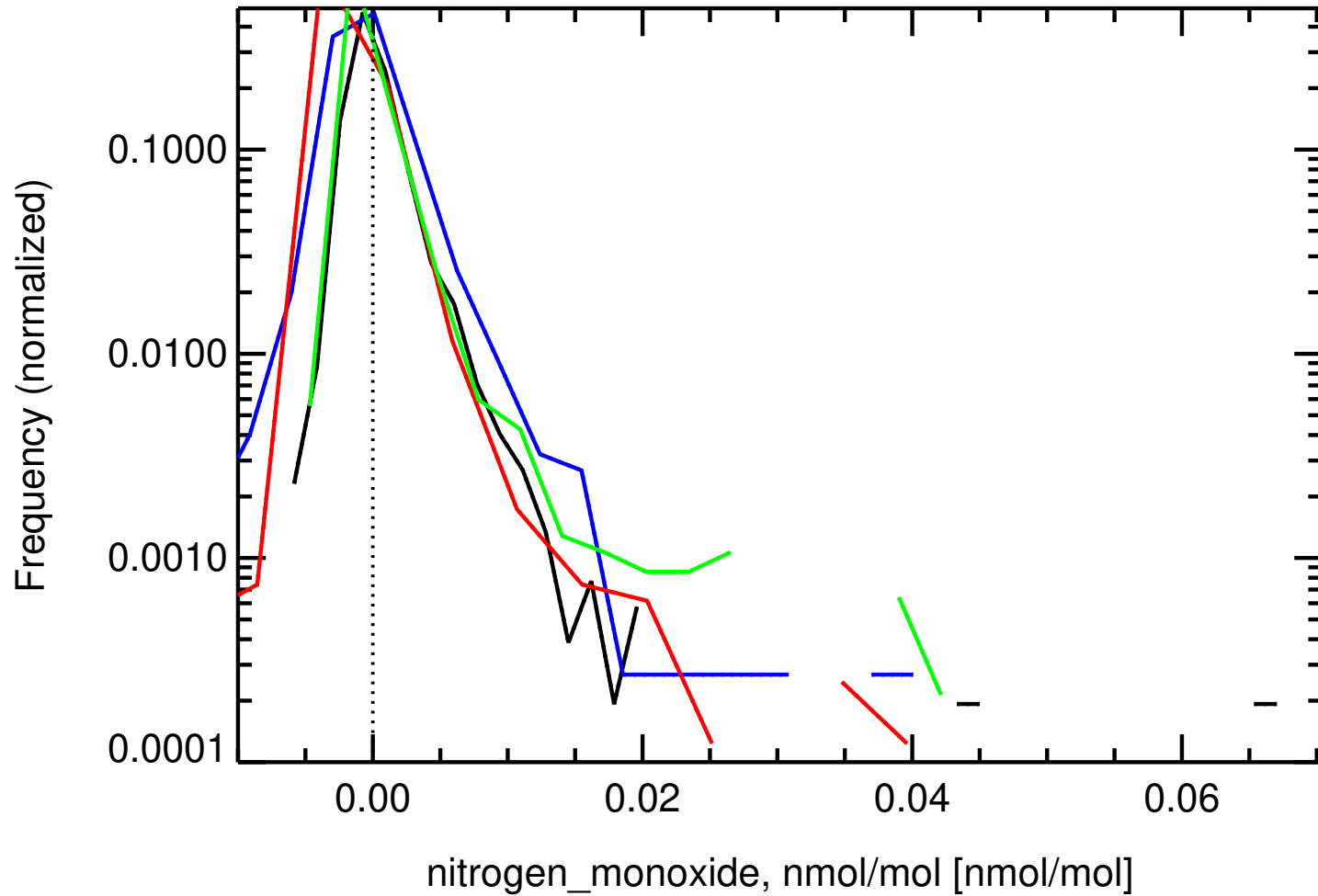
daily averages
CV0001G , Cape Verde Observatory



nitrogen_monoxide,nmol/mol MEAN = 0.0010 nmol/mol

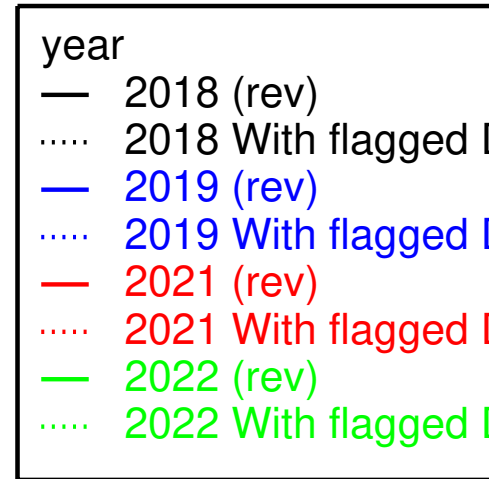
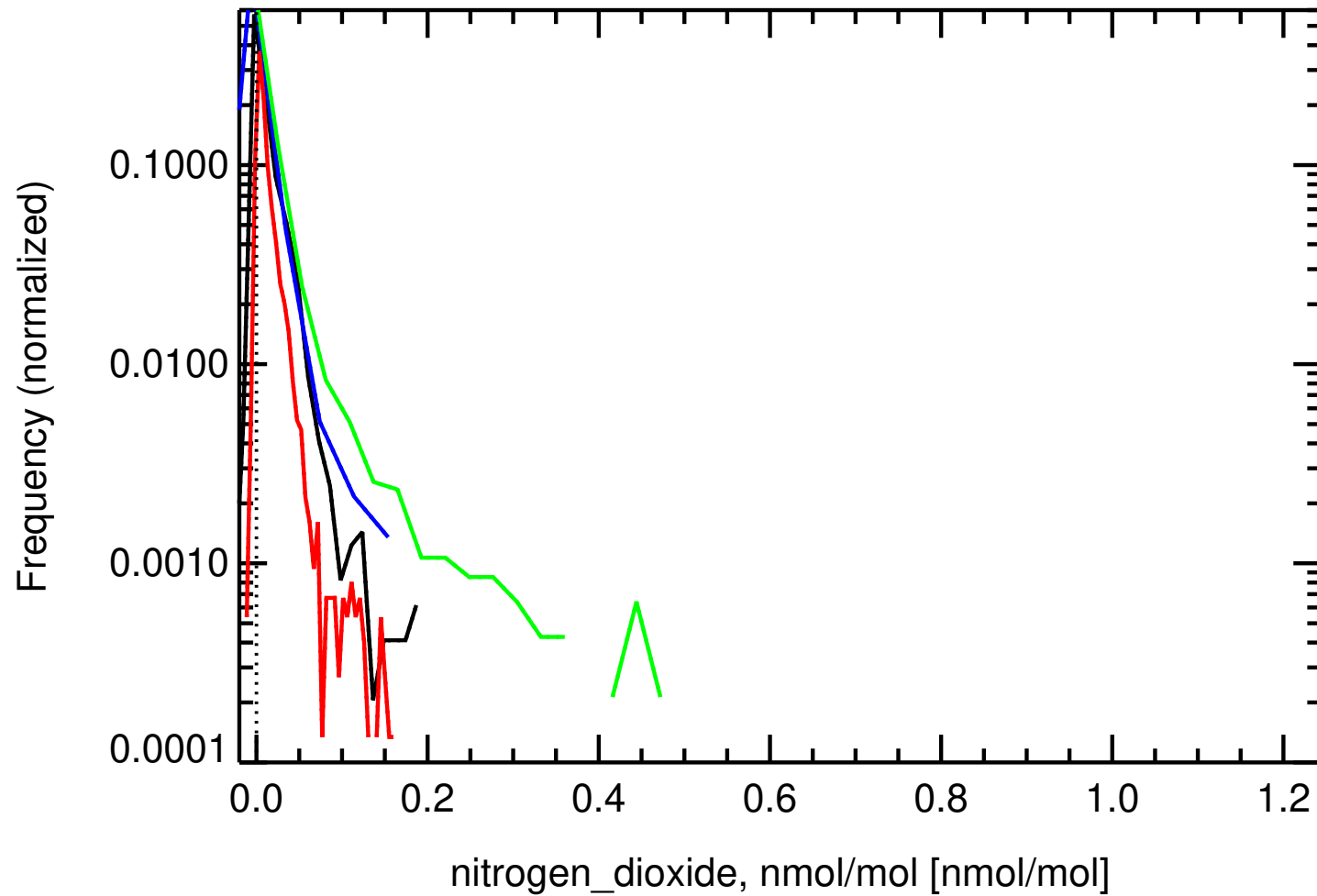
Histogram

CV0001G , Cape Verde Observatory

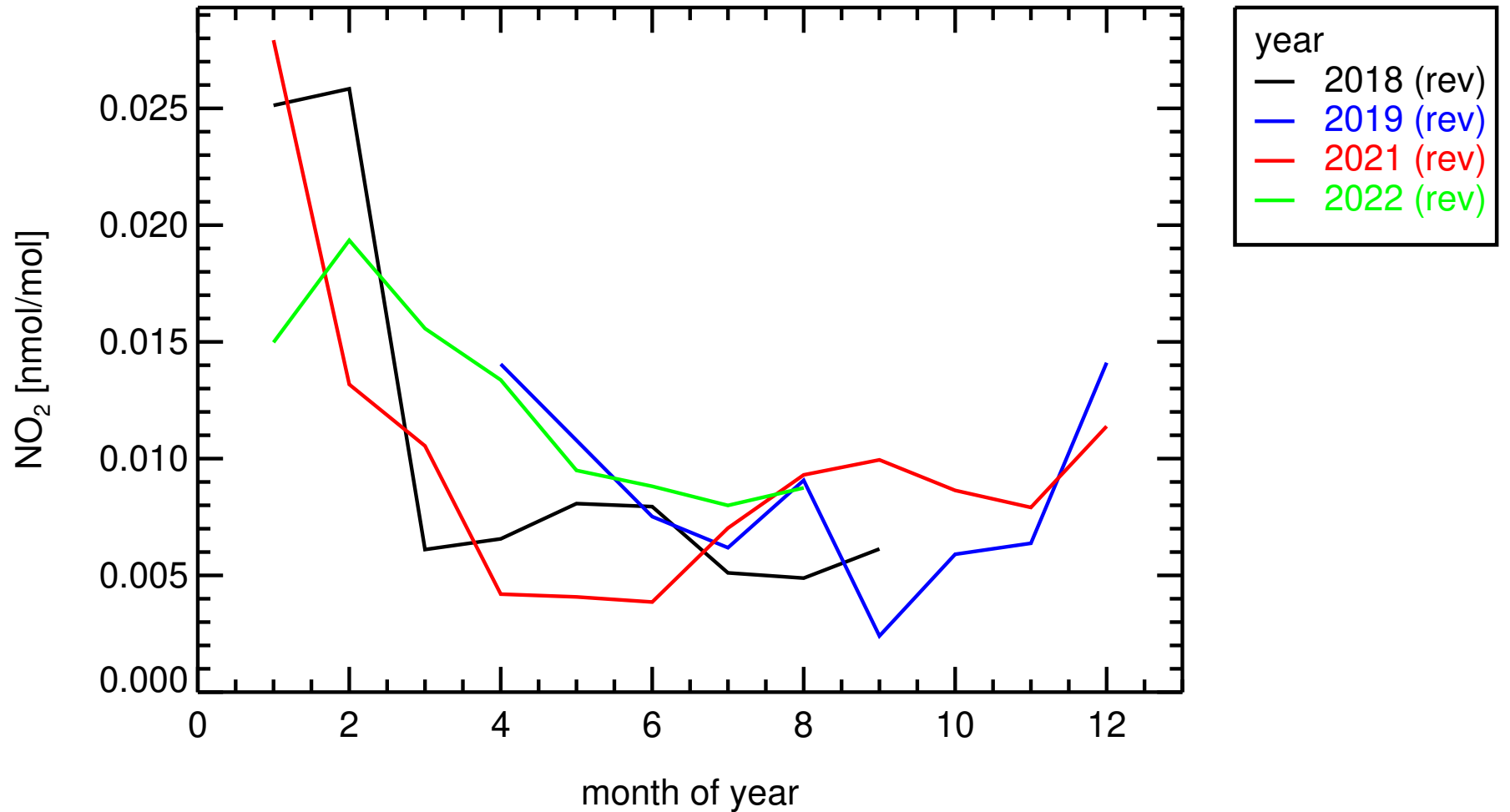


Histogram

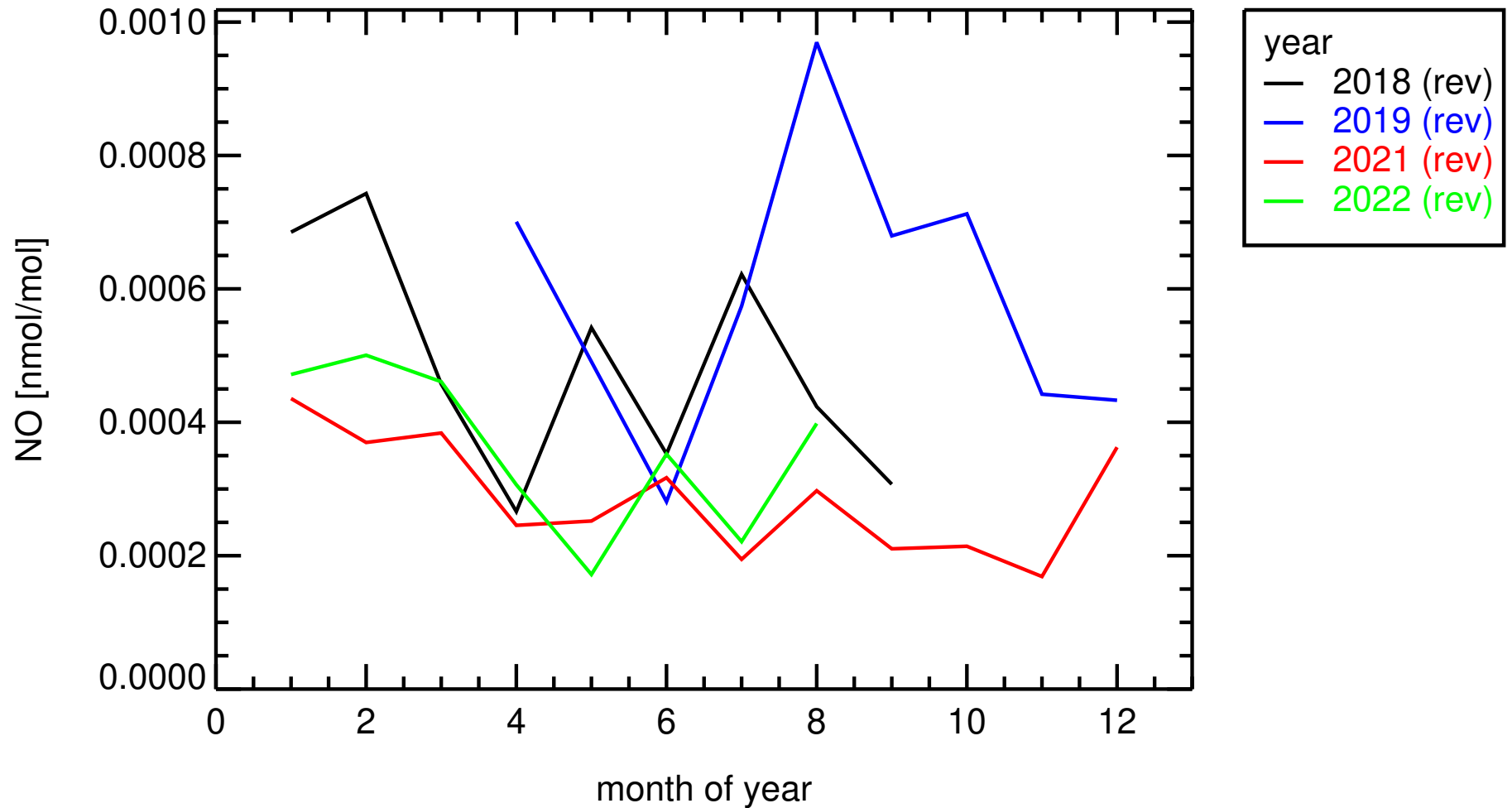
CV0001G , Cape Verde Observatory



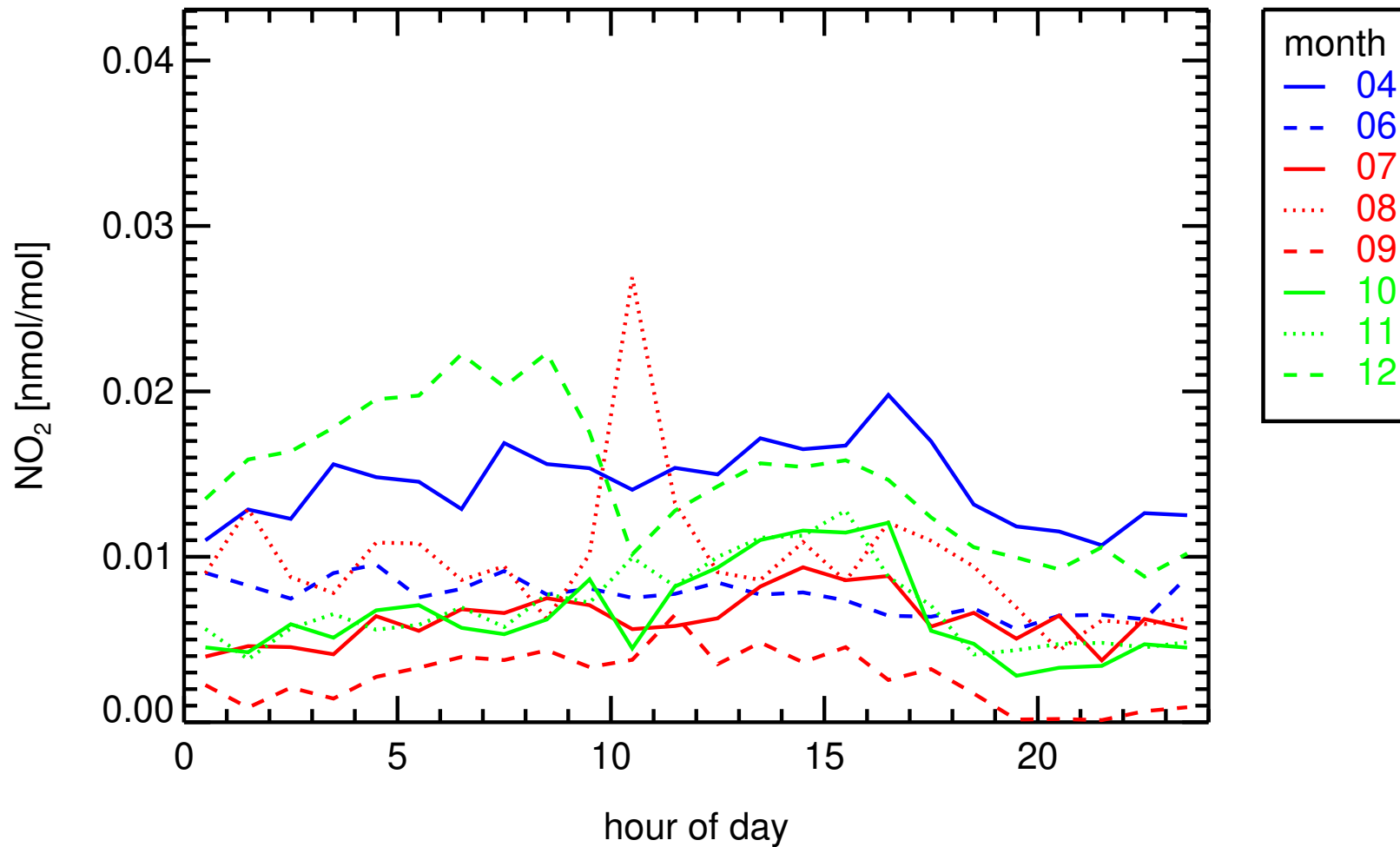
monthly medians
CV0001G , Cape Verde Observatory



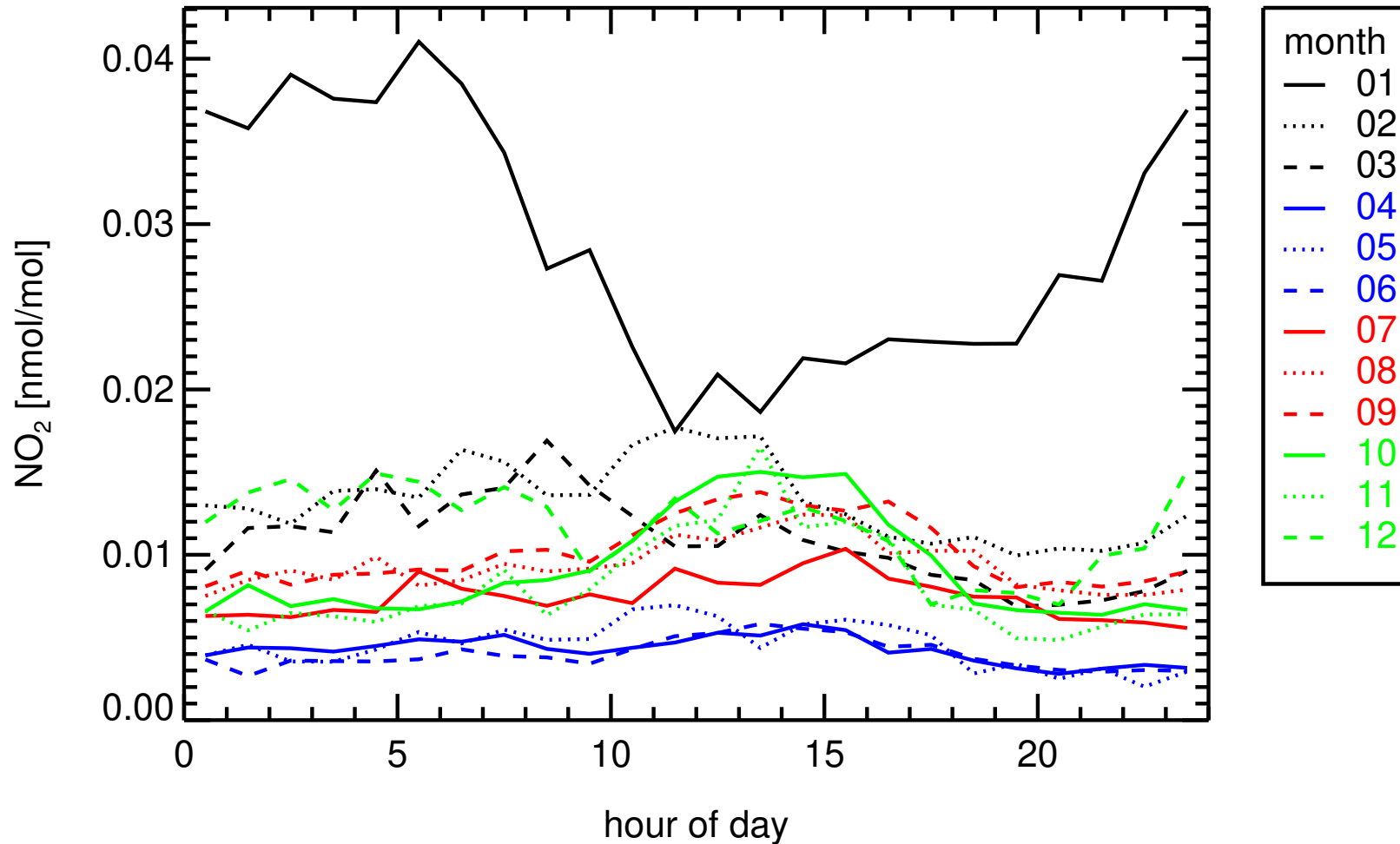
monthly medians
CV0001G , Cape Verde Observatory



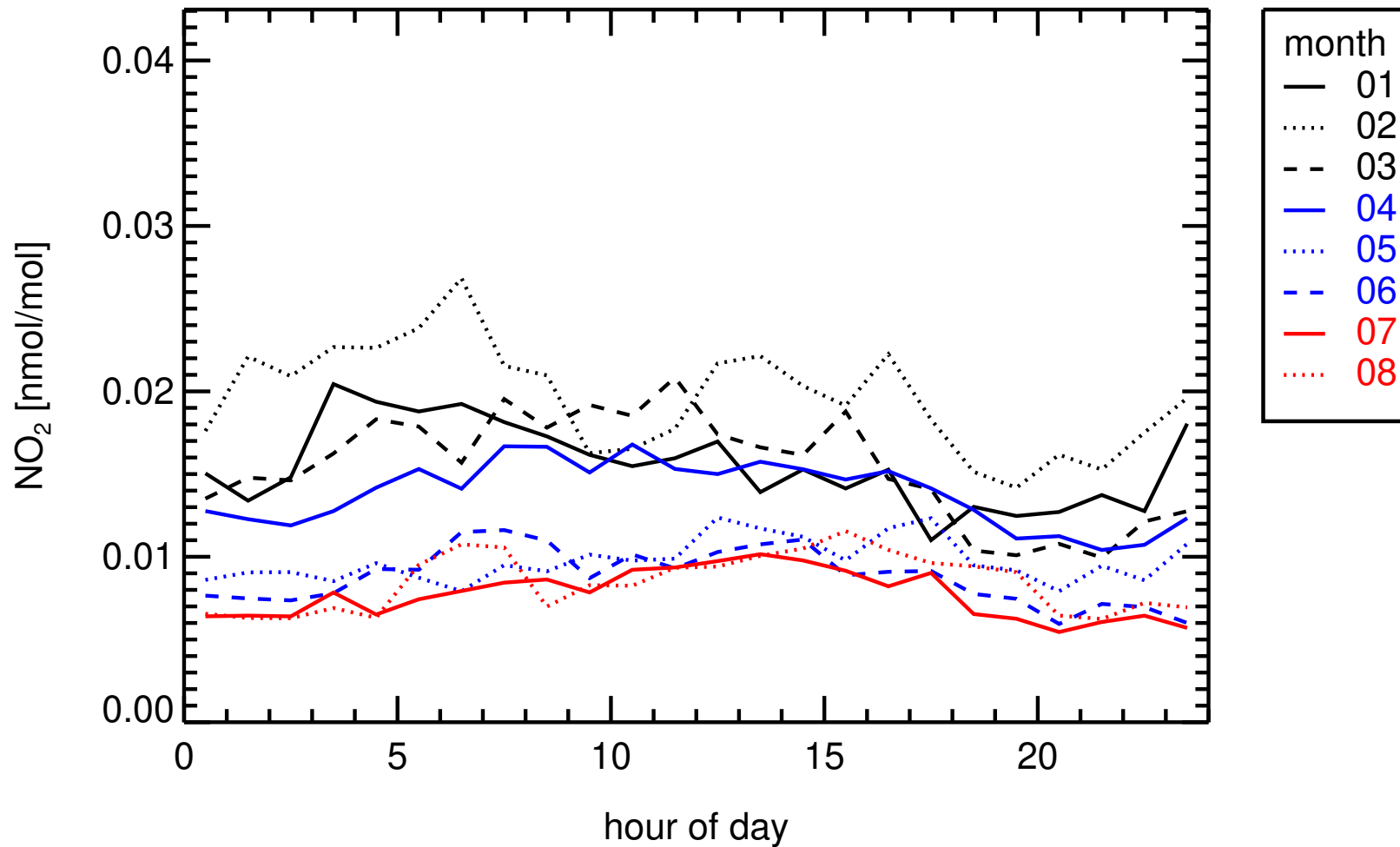
hourly medians 2019
CV0001G , Cape Verde Observatory (revised)



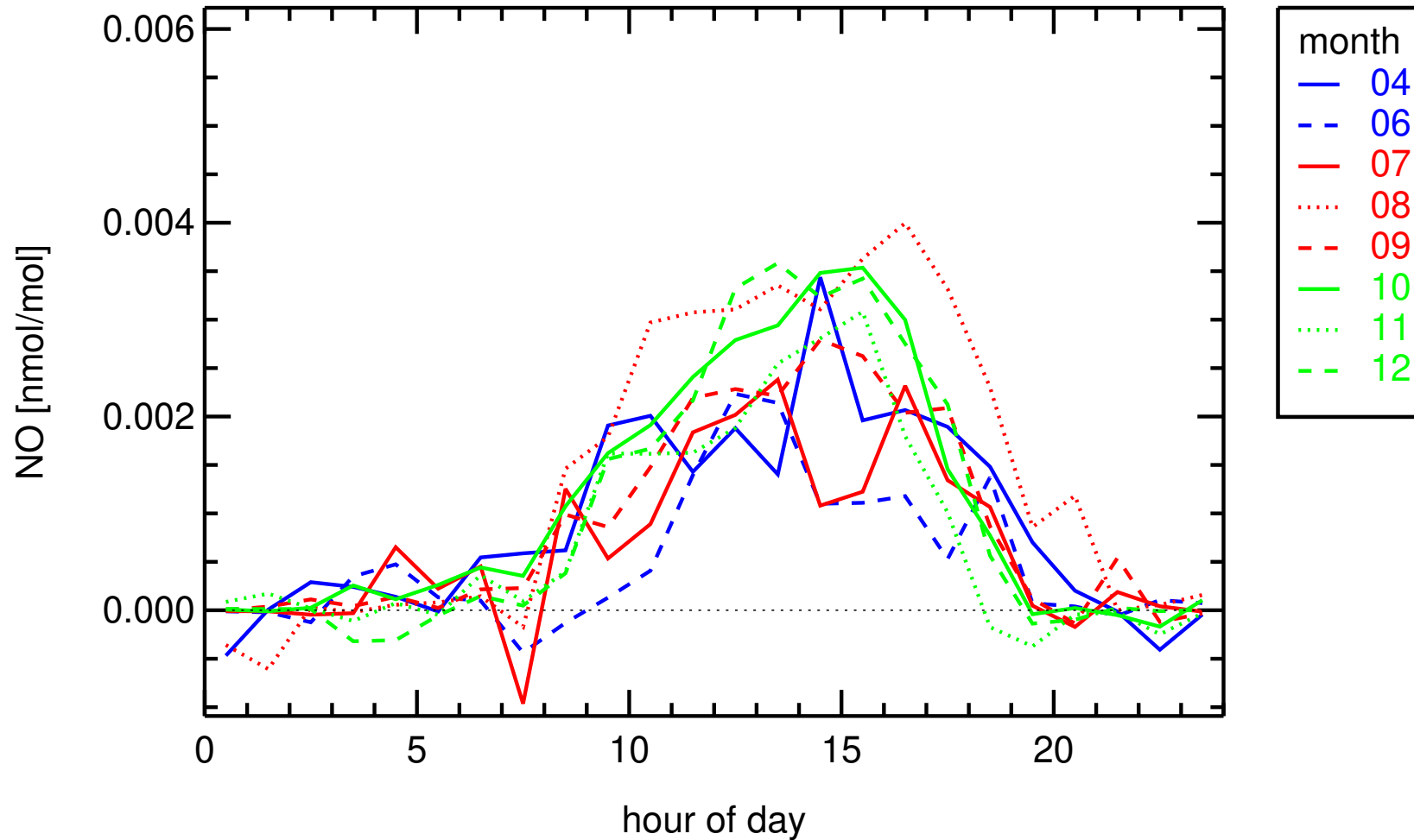
hourly medians 2021
CV0001G , Cape Verde Observatory (revised)



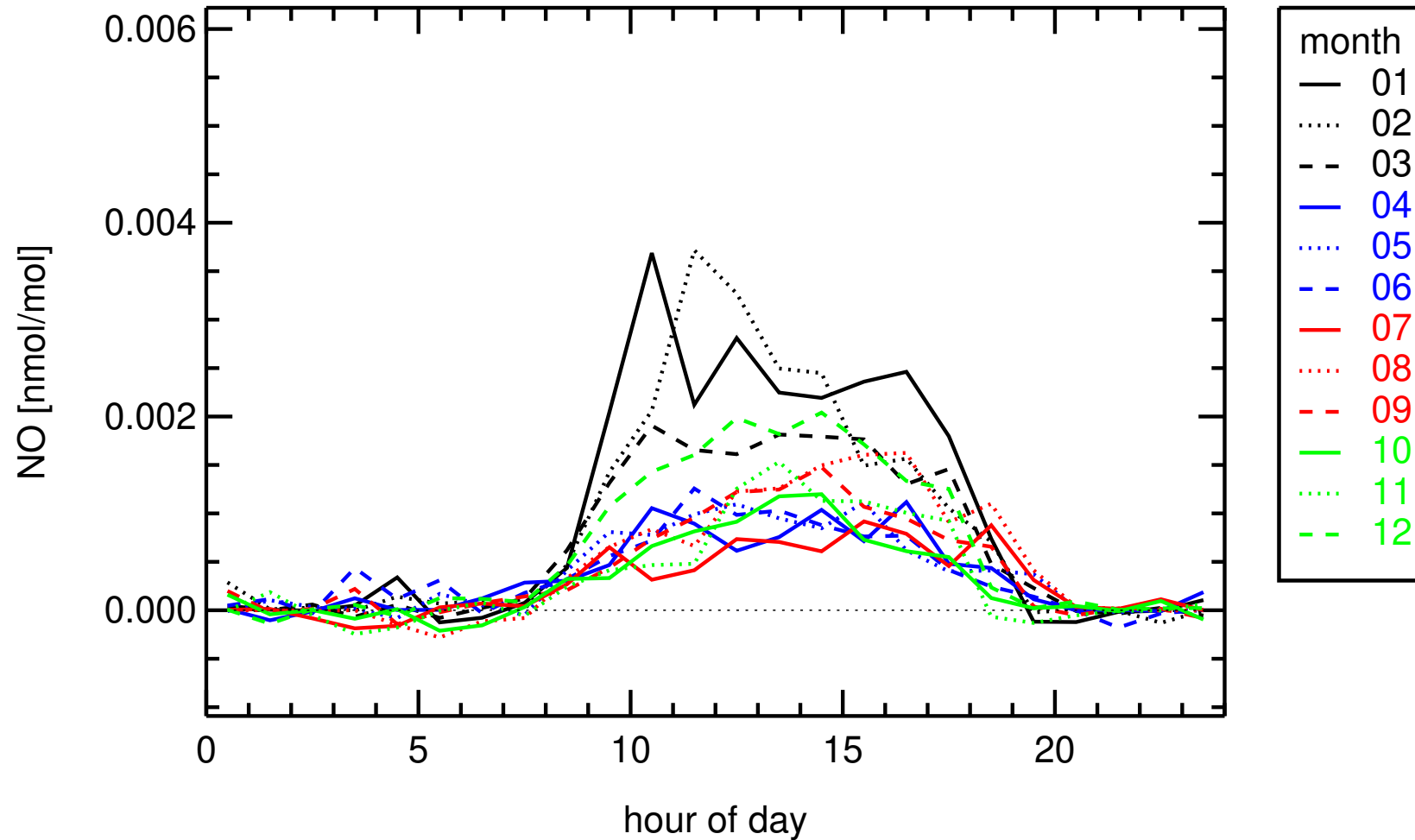
hourly medians 2022
CV0001G , Cape Verde Observatory (revised)



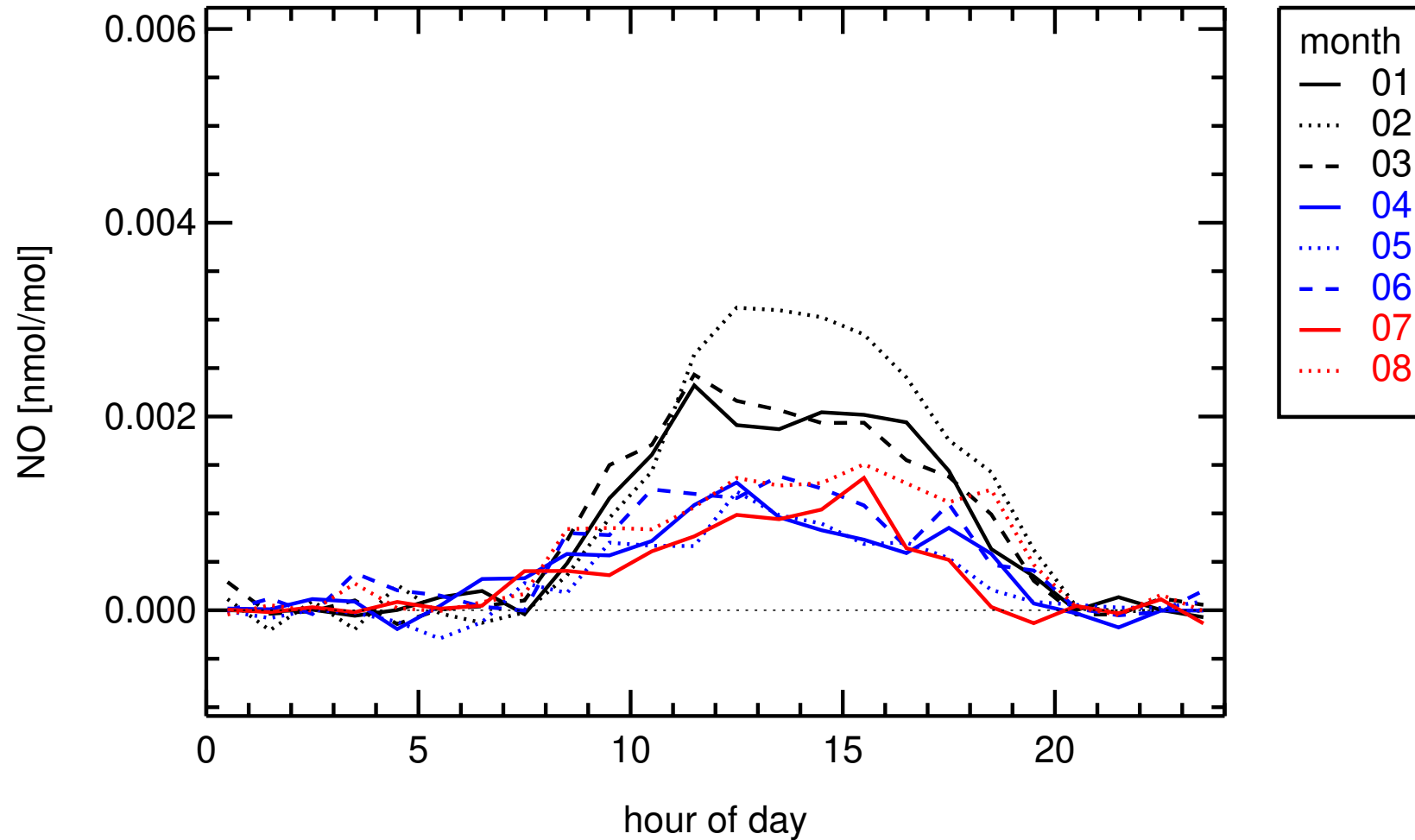
hourly medians 2019
CV0001G , Cape Verde Observatory (revised)



hourly medians 2021
CV0001G , Cape Verde Observatory (revised)



hourly medians 2022
CV0001G , Cape Verde Observatory (revised)



hourly medians 2022
CV0001G , Cape Verde

