

Station WDCA-ID:GAWCVO  
Station GAW-Name:Cape Verde Observatory  
Station GAW-ID:CVO  
Station latitude:16.8638  
Station longitude:-24.8675  
Station altitude:10m  
Station land use:Volcanic rock

Filename should be :

CV0001G.20230101000000.20240321000000.chemiluminescence\_photolytic.NOx.air.1y.5mn.GB12L\_CVO\_AQD\_Nox.GB12L\_AQD\_NOx.lev1.nas

Filename not ok !

Filename is:

CV0001G.20230101000000.20240322000000.chemiluminescence\_photolytic.NOx.air.1y.5mn.GB12L\_CVO\_AQD\_Nox.lev1.nas

Filename should be :

CV0001G.20230101000000.20240321000000.chemiluminescence\_photolytic.NOx.air.1y.5mn.GB12L\_CVO\_AQD\_Nox.GB12L\_AQD\_NOx.lev1.nas

Filename not ok !

Filename is:

CV0001G.20230101000000.20240322000000.chemiluminescence\_photolytic.NOx.air.1y.5mn.GB12L\_CVO\_AQD\_Nox.lev1.nas

## File name

### Description:

This line contains the name of the file itself. The file name is composed of 1 header items as specified in the syntax line above.

### Syntax:

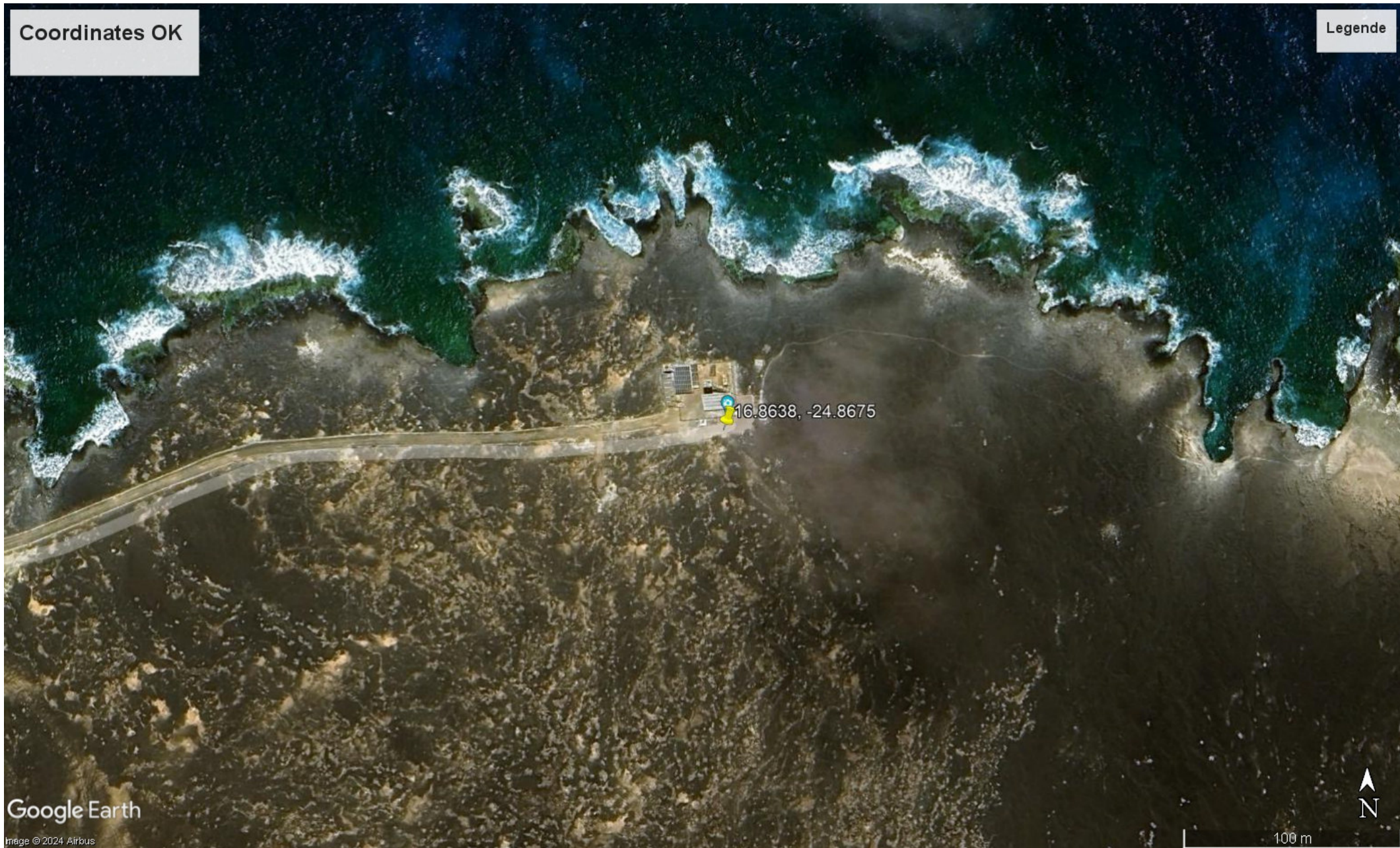
File name:            <station code>.  
                         <start date/time>.  
                         <revision date/time>.  
                         <instrument type>.  
                         <component>.  
                         <matrix>.  
                         <period code>.  
                         <resolution code>.  
                         <laboratory code\_instrument name>.  
                         <method ref>        ACTRIS DATA WS 2022/04/28  
                         lev<data level>.nas

Datasubmission:  
2022 Lev 2 -> 2023 Lev 1  
TC does Level 2  
For Level metadata in level 0 are needed



Coordinates OK

Legende

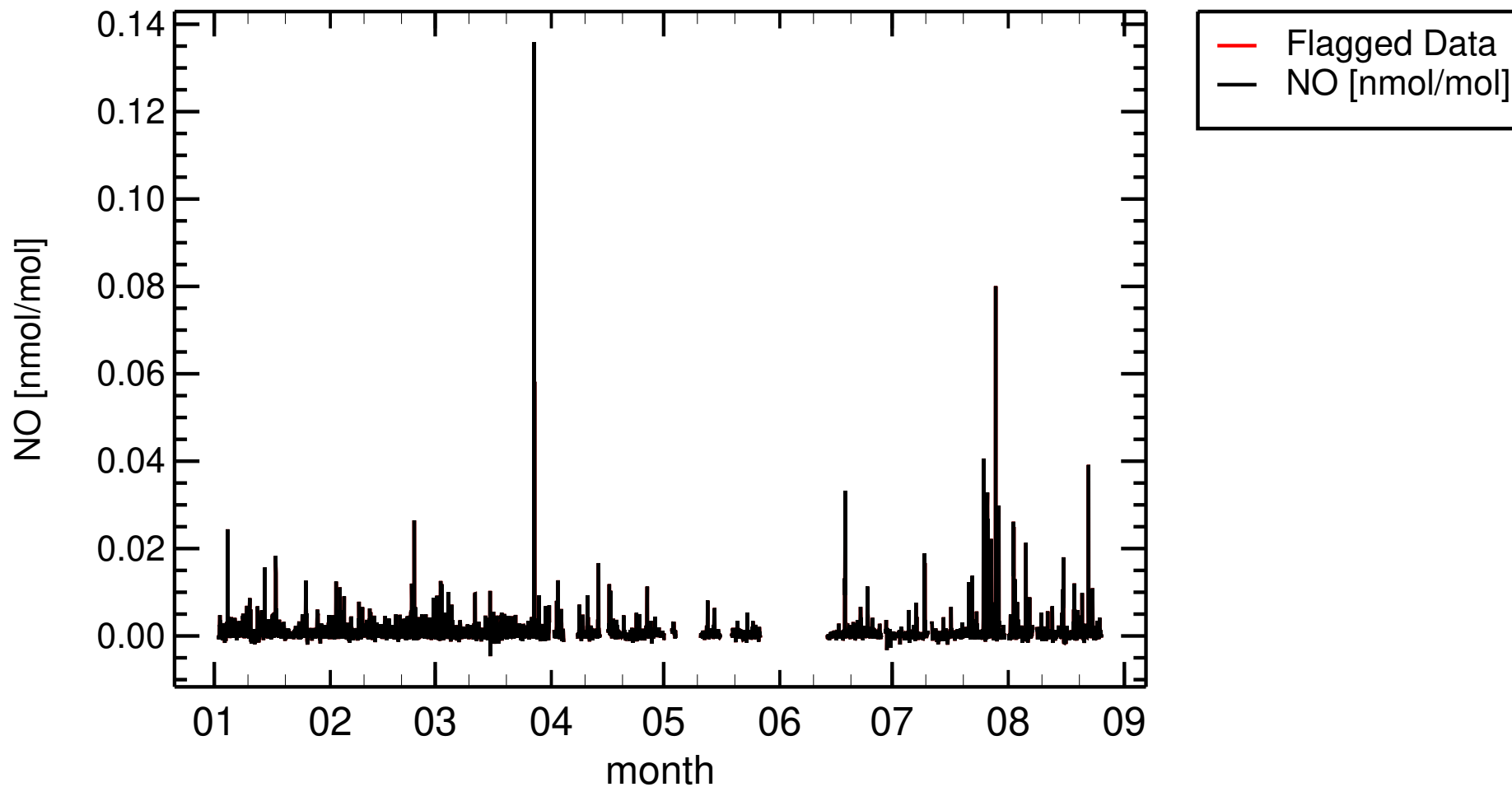


ACTRIS DATA WS 2022/04/28

5 / 32

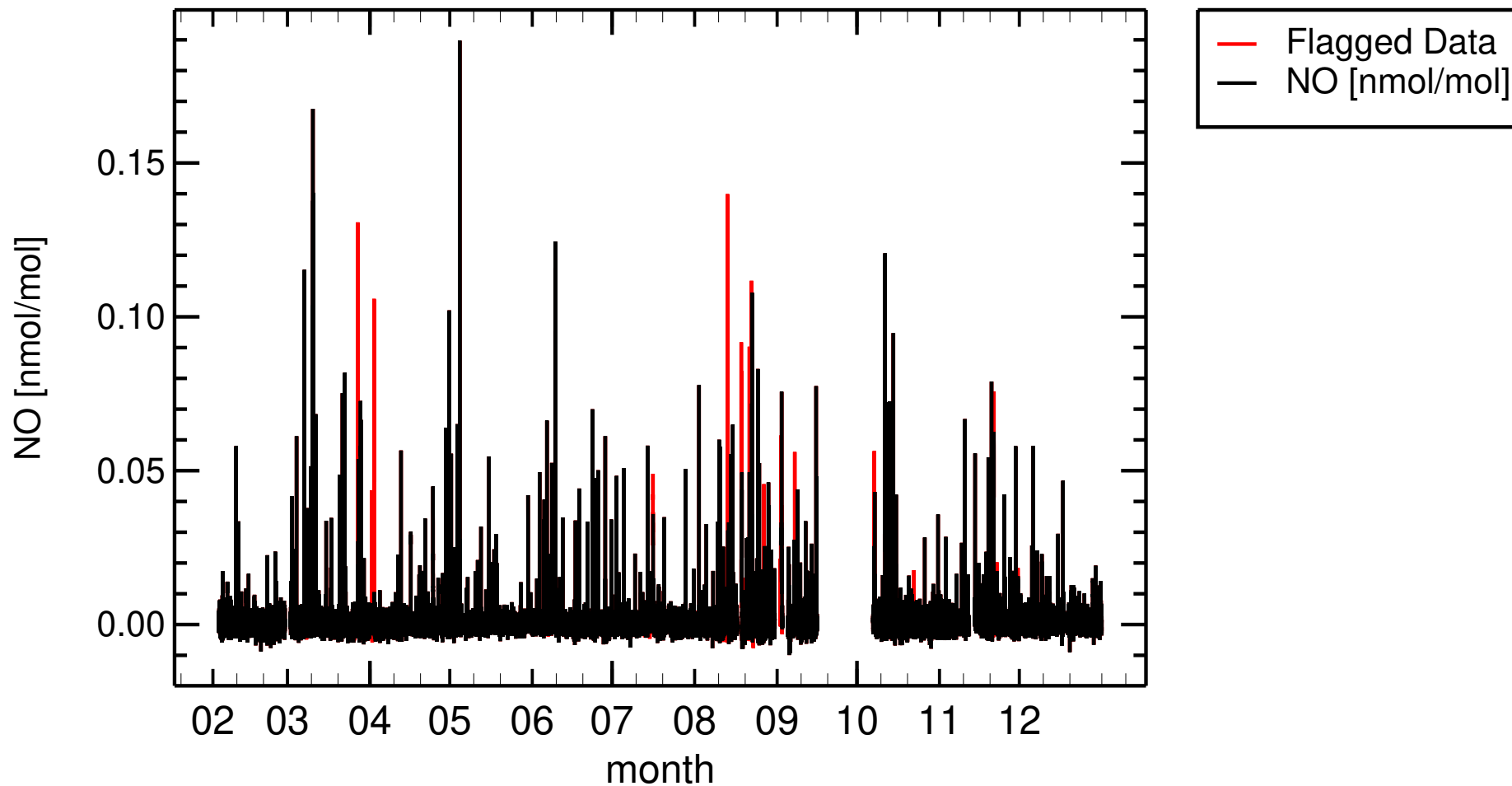
2022

CV0001G , Cape Verde Atmospheric Observatory



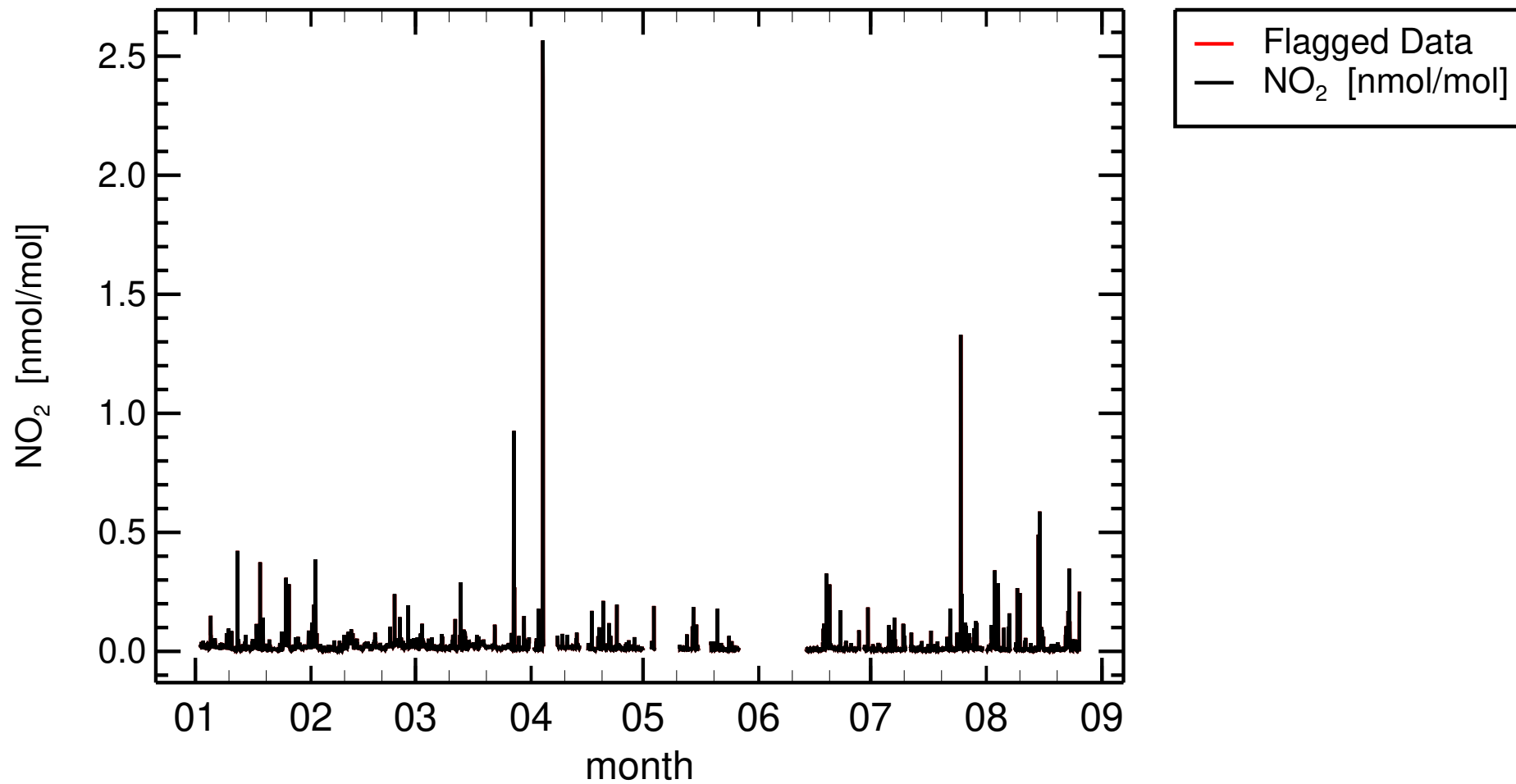
2023

CV0001G , Cape Verde Atmospheric Observatory



2022

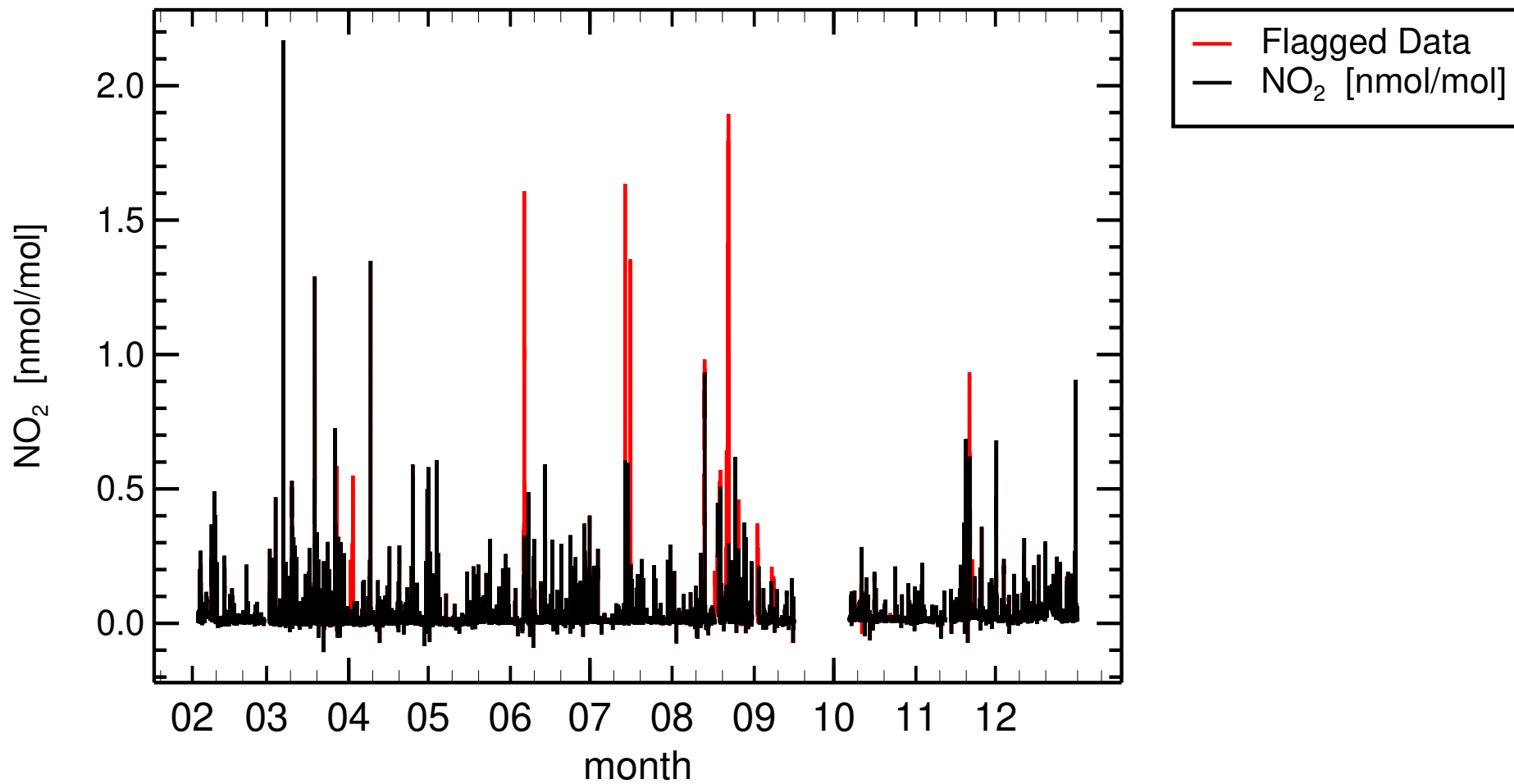
CV0001G , Cape Verde Atmospheric Observatory





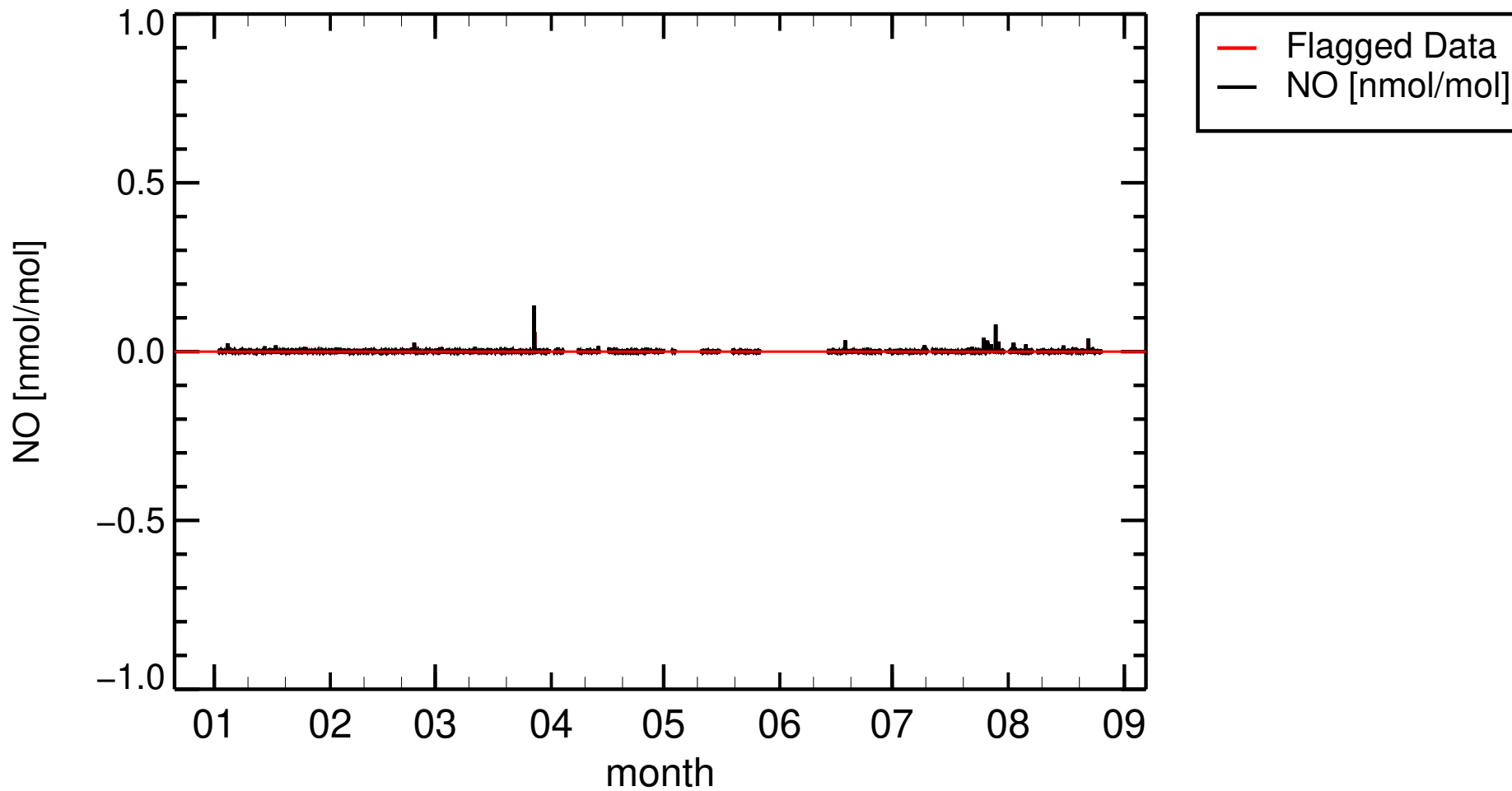
2023

CV0001G , Cape Verde Atmospheric Observatory



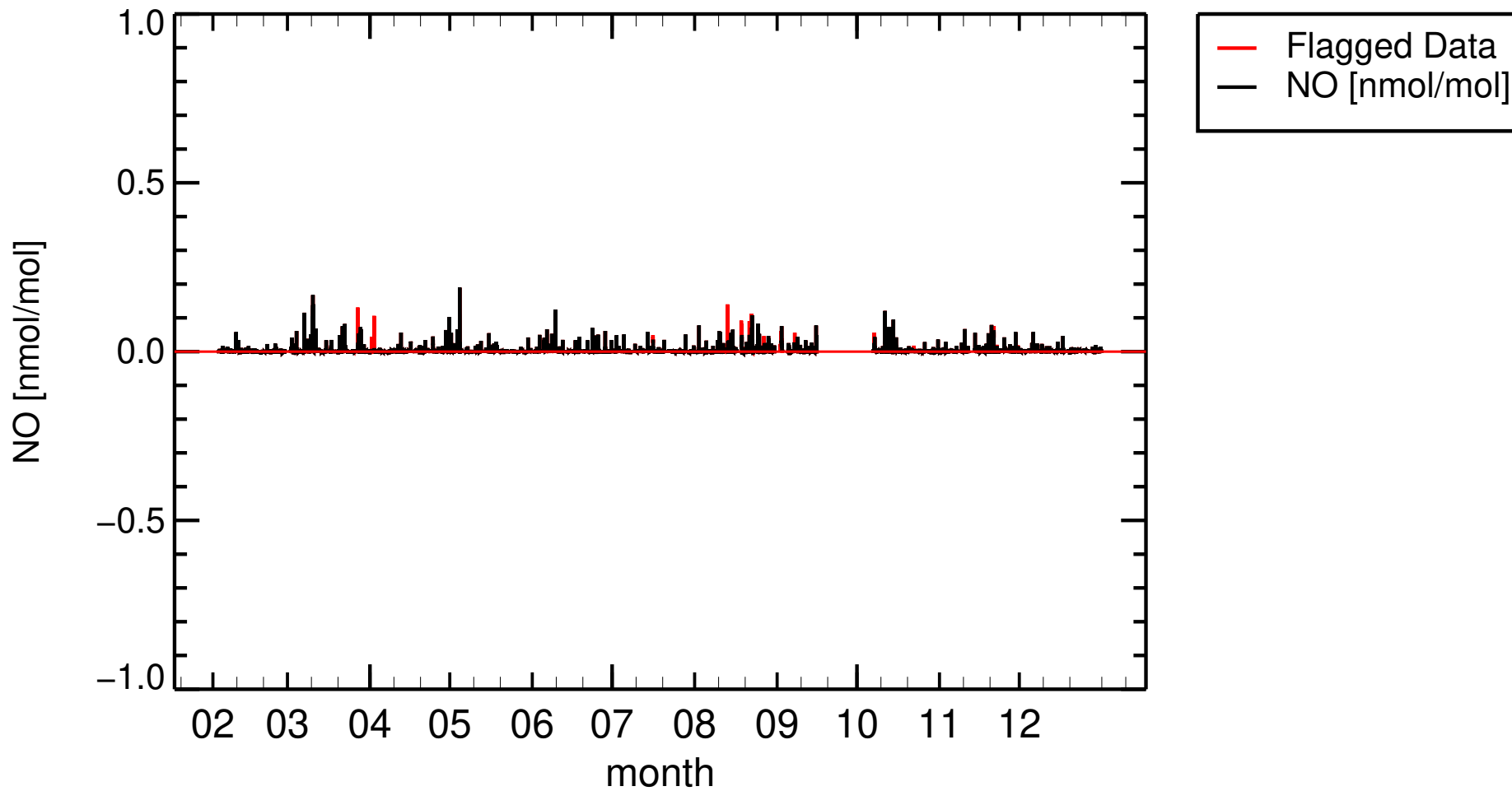
2022

CV0001G , Cape Verde Atmospheric Observatory



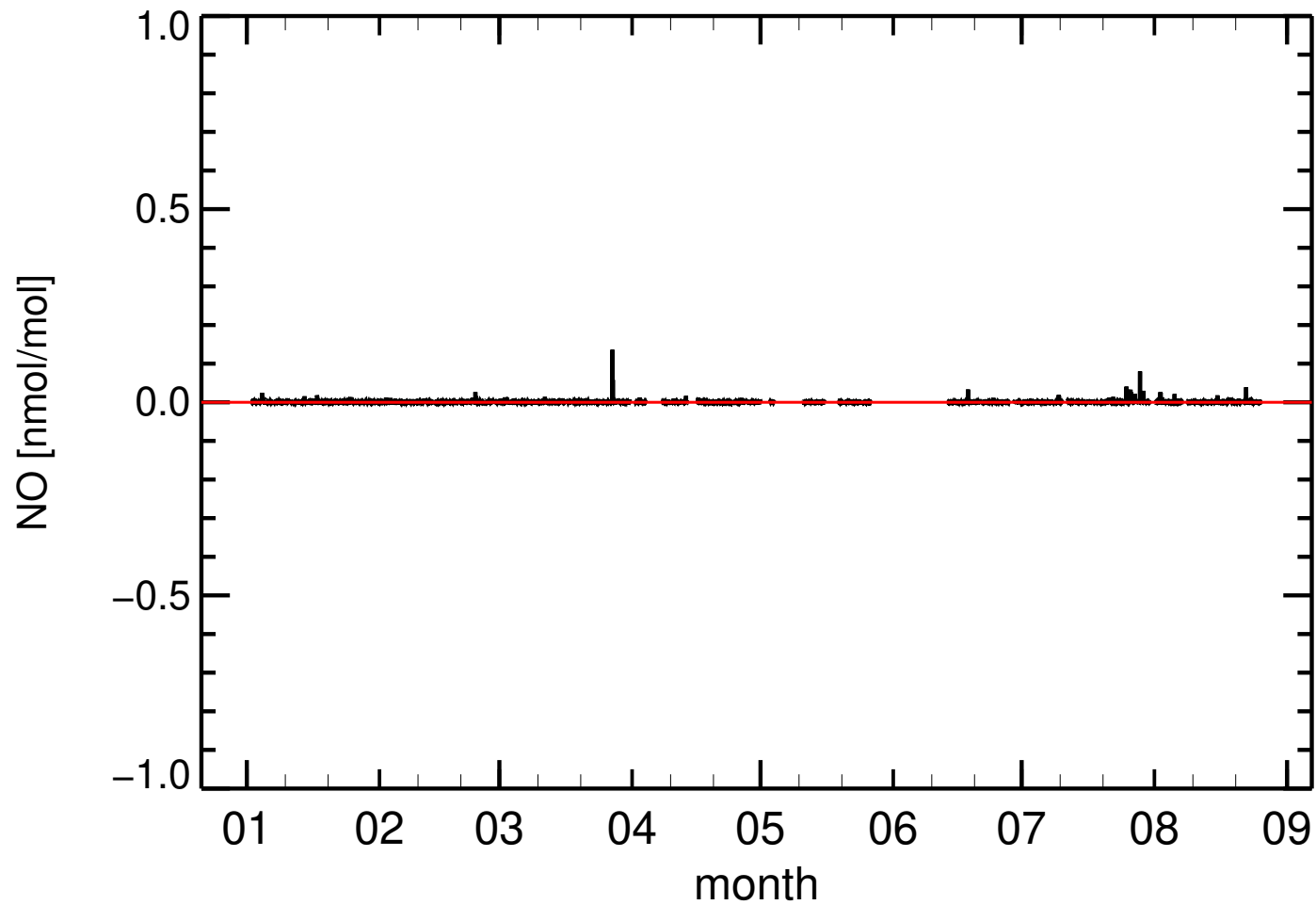
2023

CV0001G , Cape Verde Atmospheric Observatory



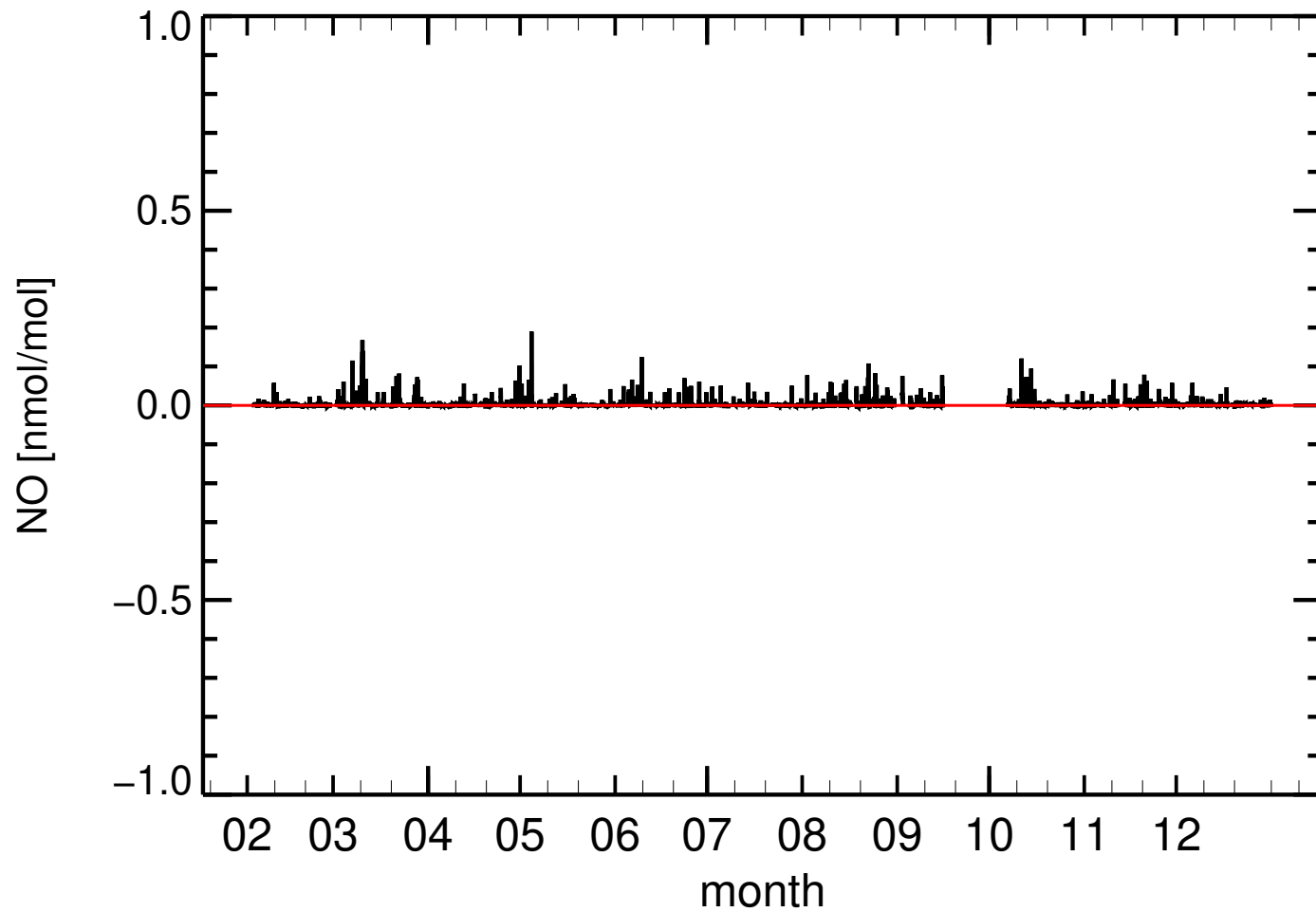
2022

CV0001G , Cape Verde Atmospheric Observatory



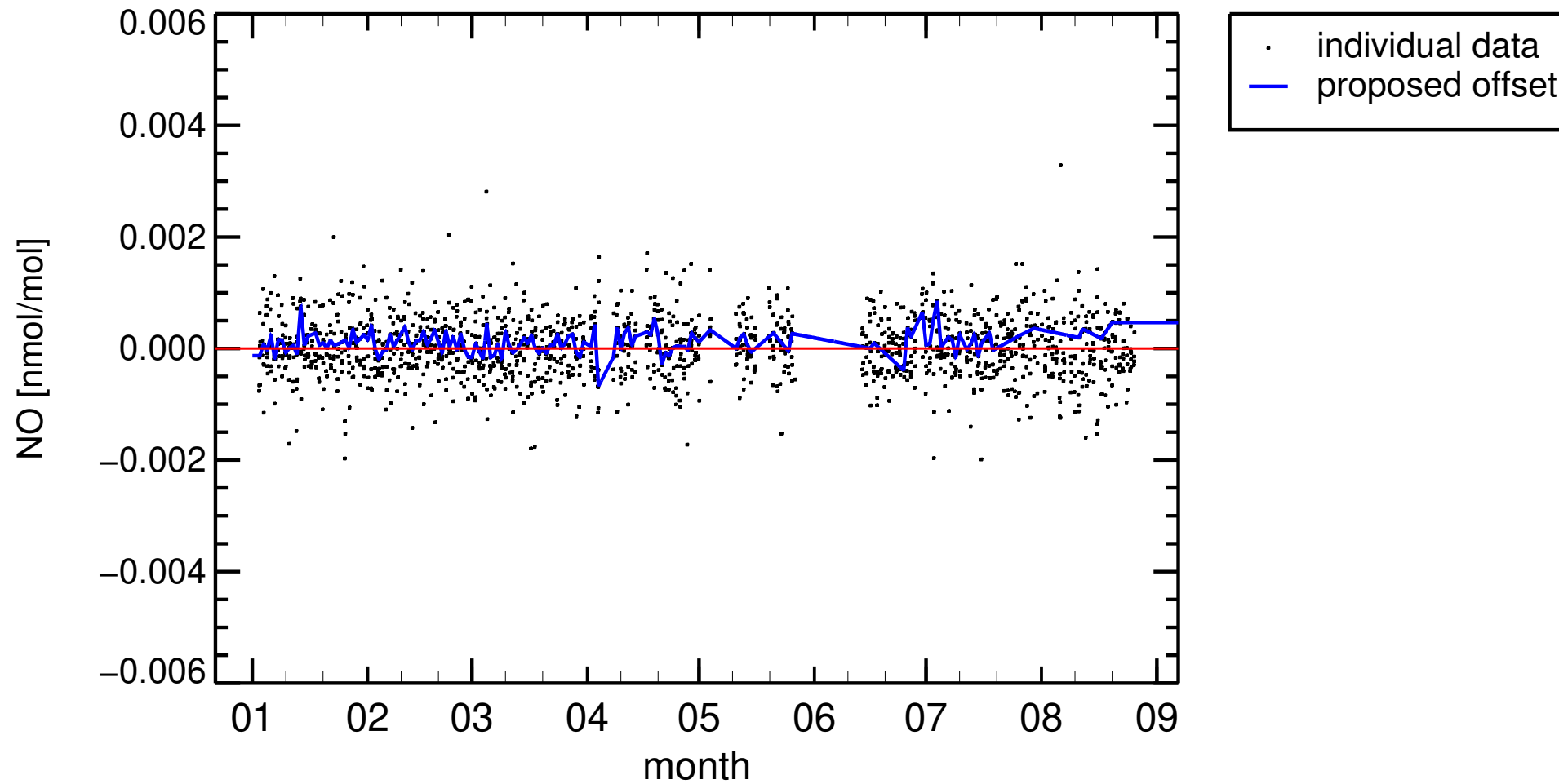
2023

CV0001G , Cape Verde Atmospheric Observatory



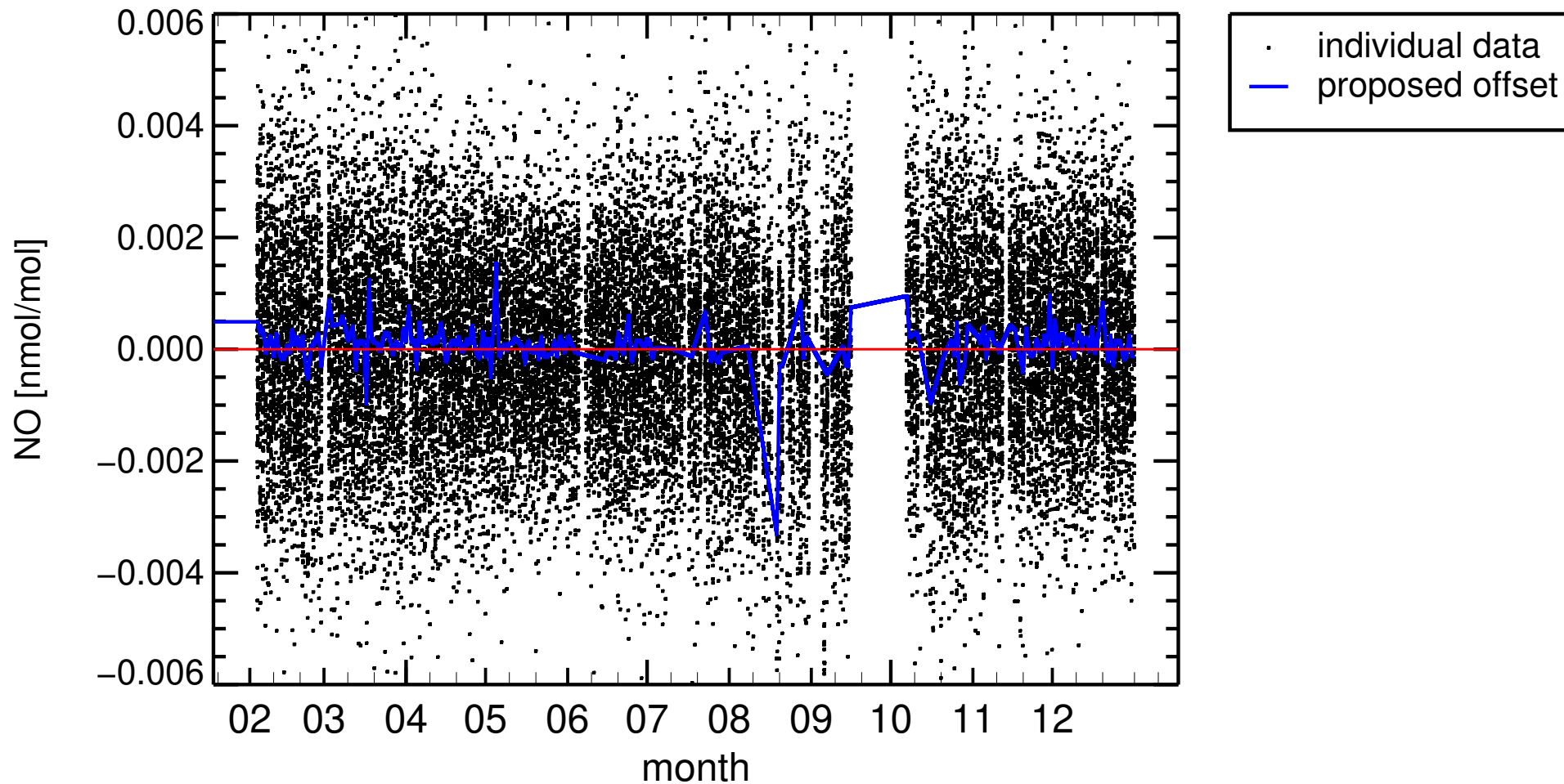
2022

CV0001G , Cape Verde Atmospheric Observatory



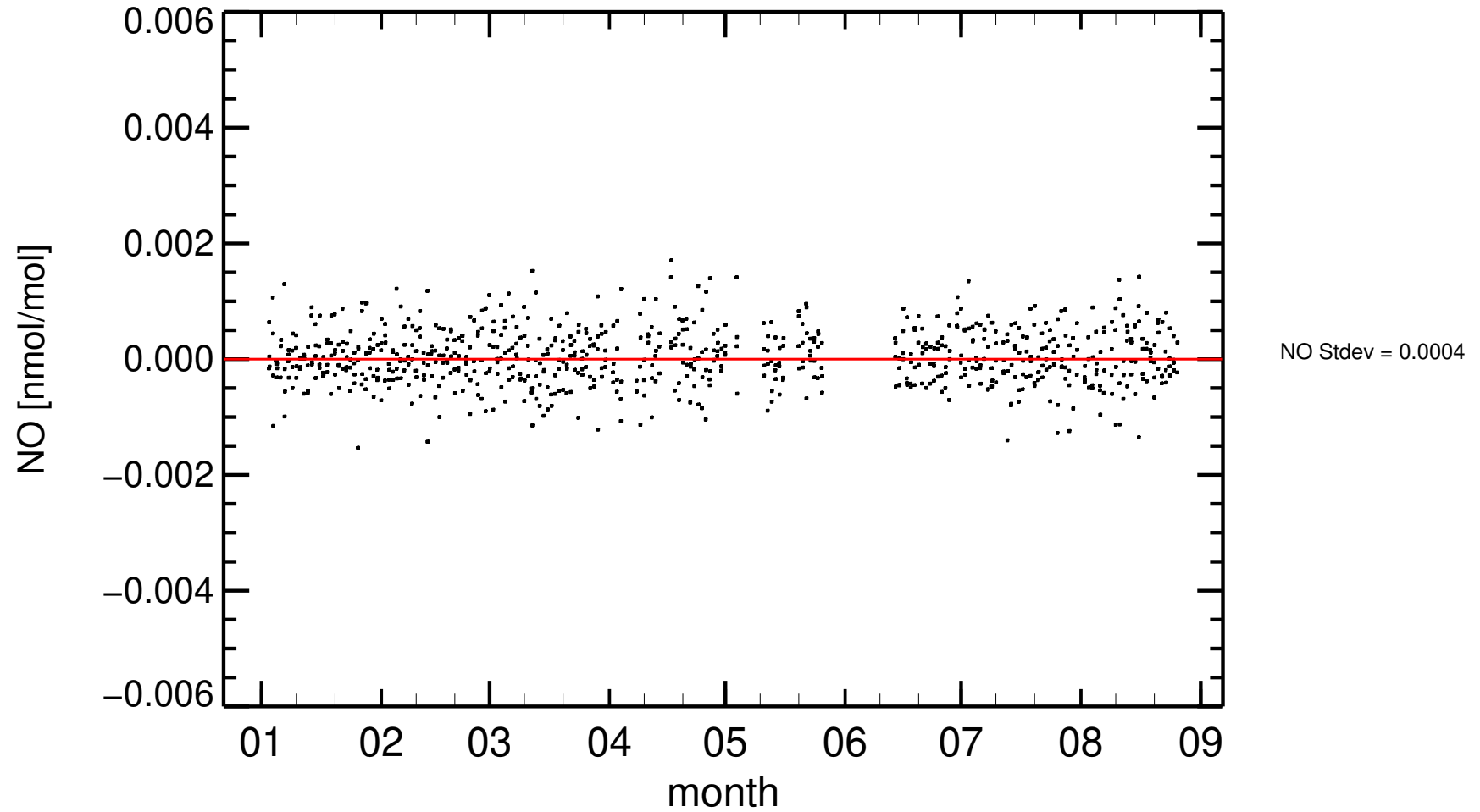
2023

CV0001G , Cape Verde Atmospheric Observatory



2022 , 22:00–02:00 only

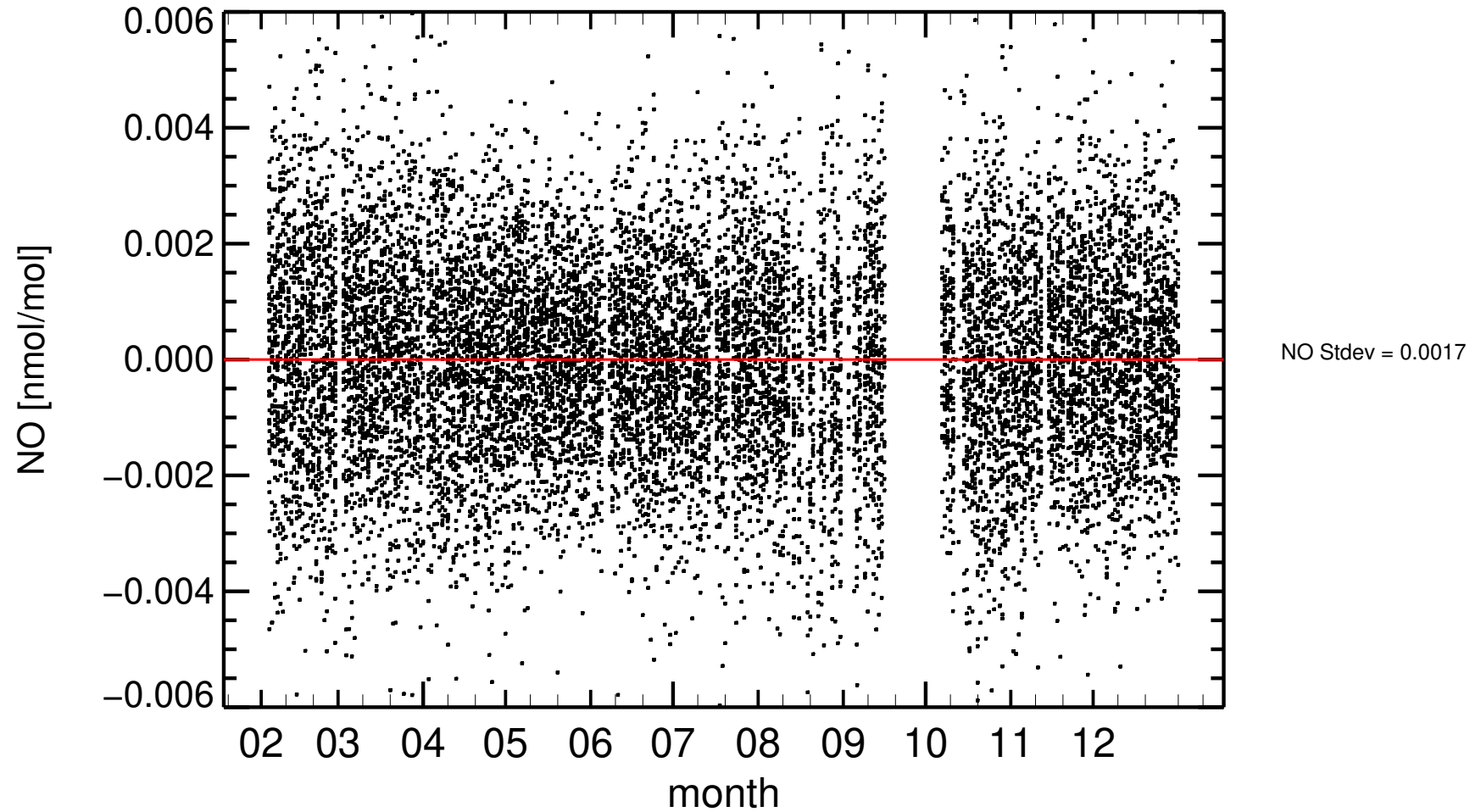
CV0001G , Cape Verde Atmospheric Observatory





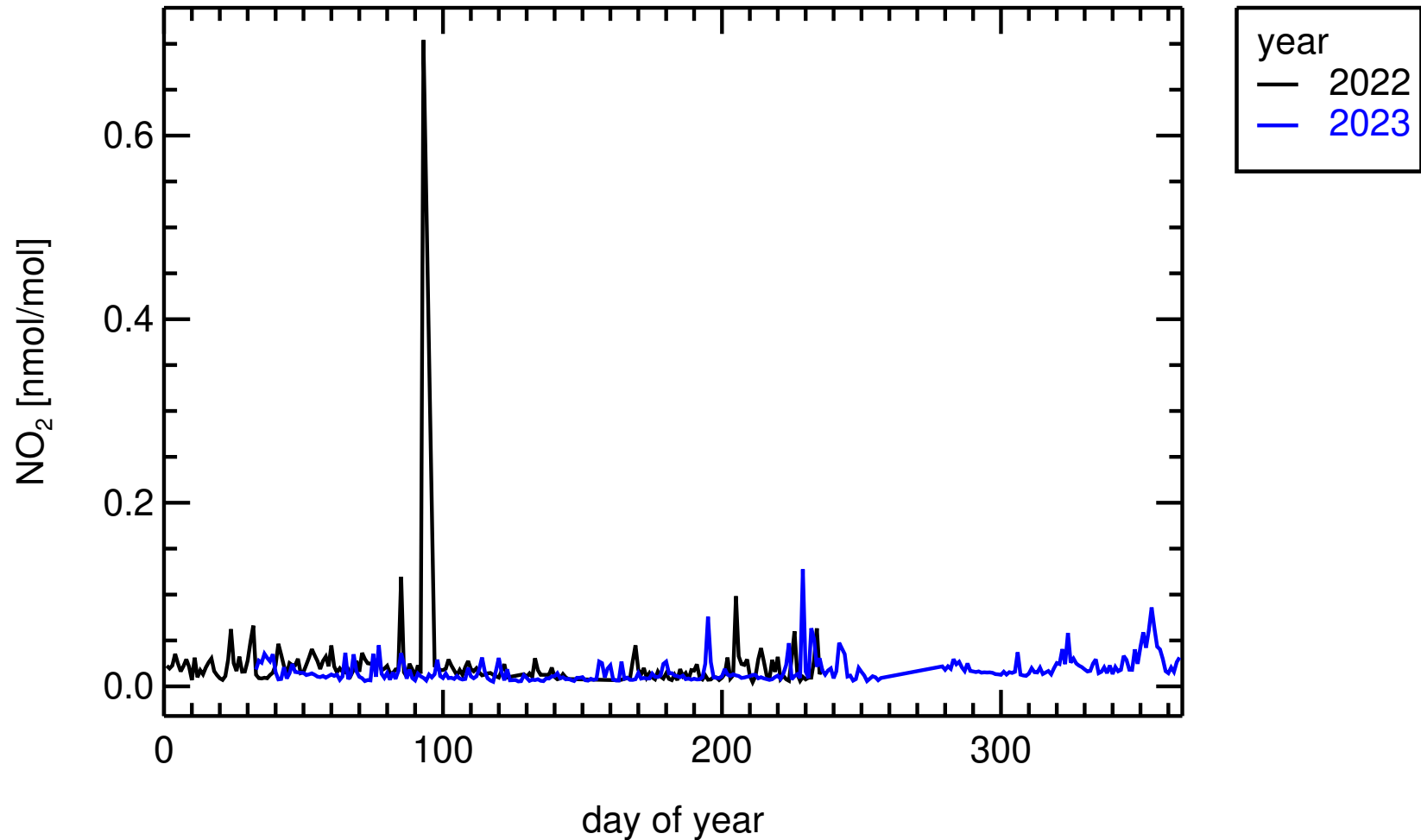
2023 , 22:00–02:00 only

CV0001G , Cape Verde Atmospheric Observatory



daily averages

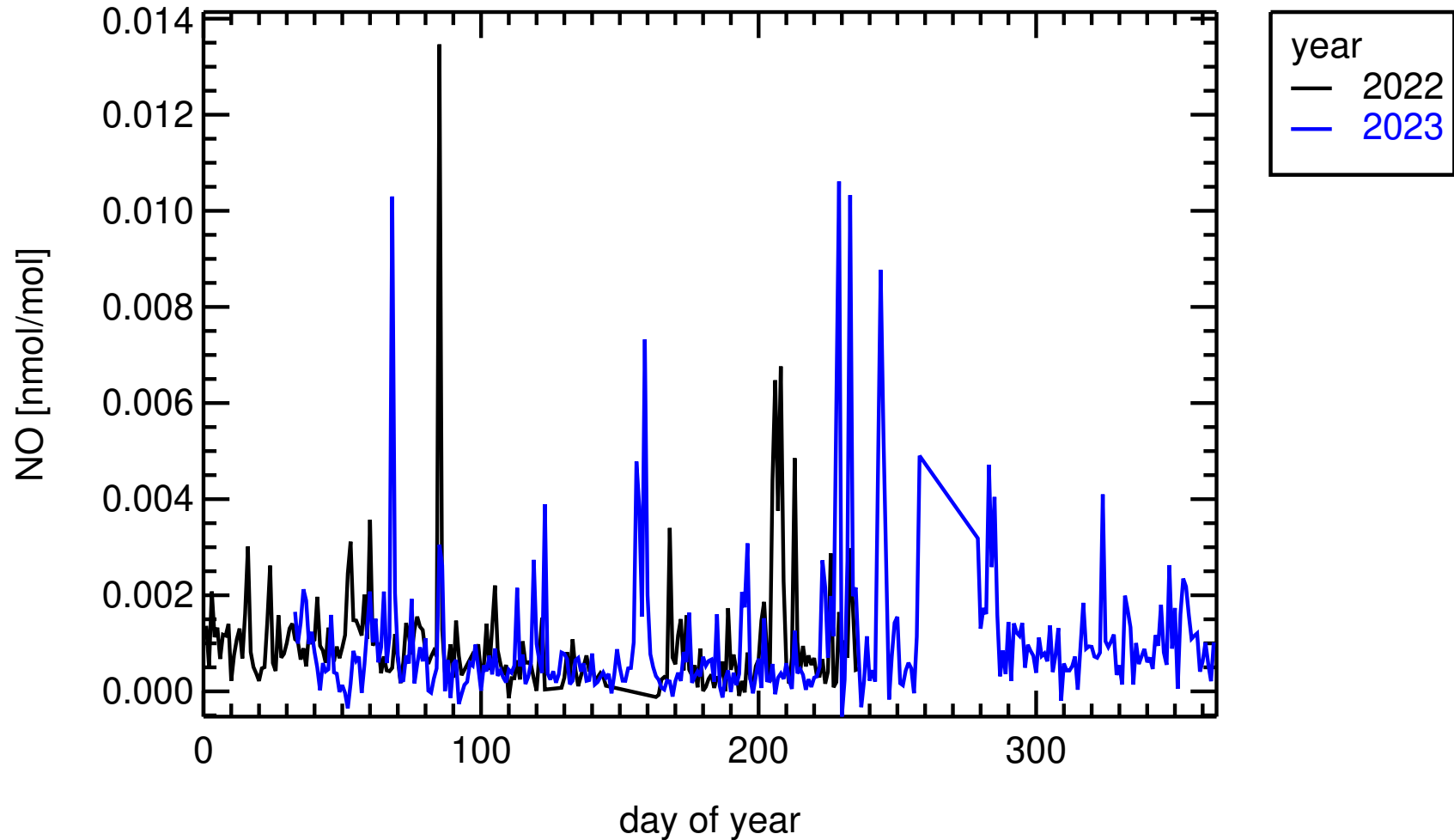
CV0001G , Cape Verde Atmospheric Observatory



NO2 MEAN = 0.0159 nmol/mol

daily averages

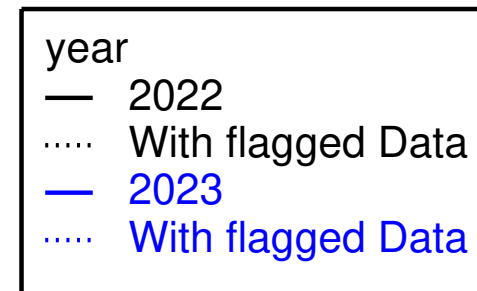
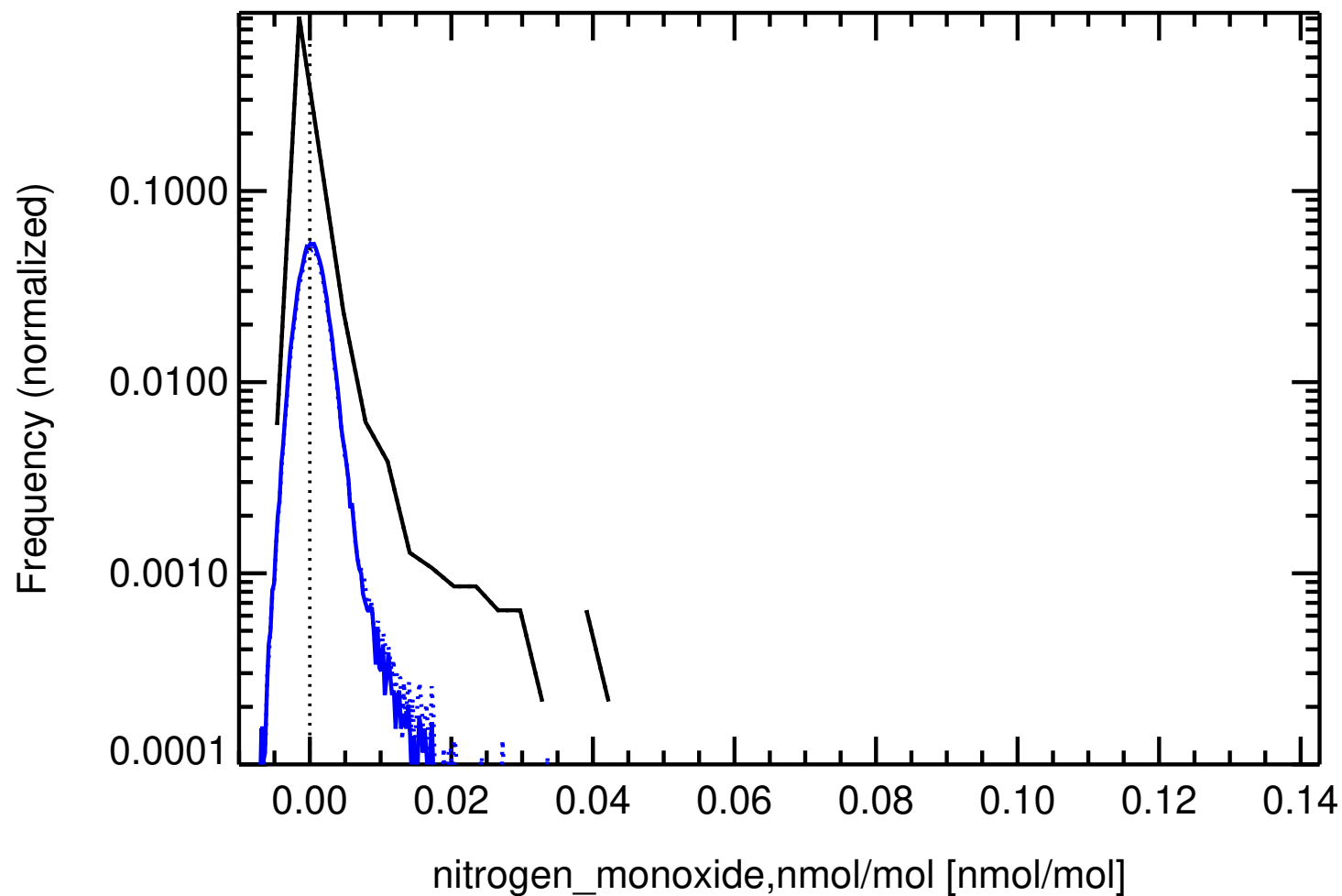
CV0001G , Cape Verde Atmospheric Observatory



NO MEAN = 0.0008 nmol/mol

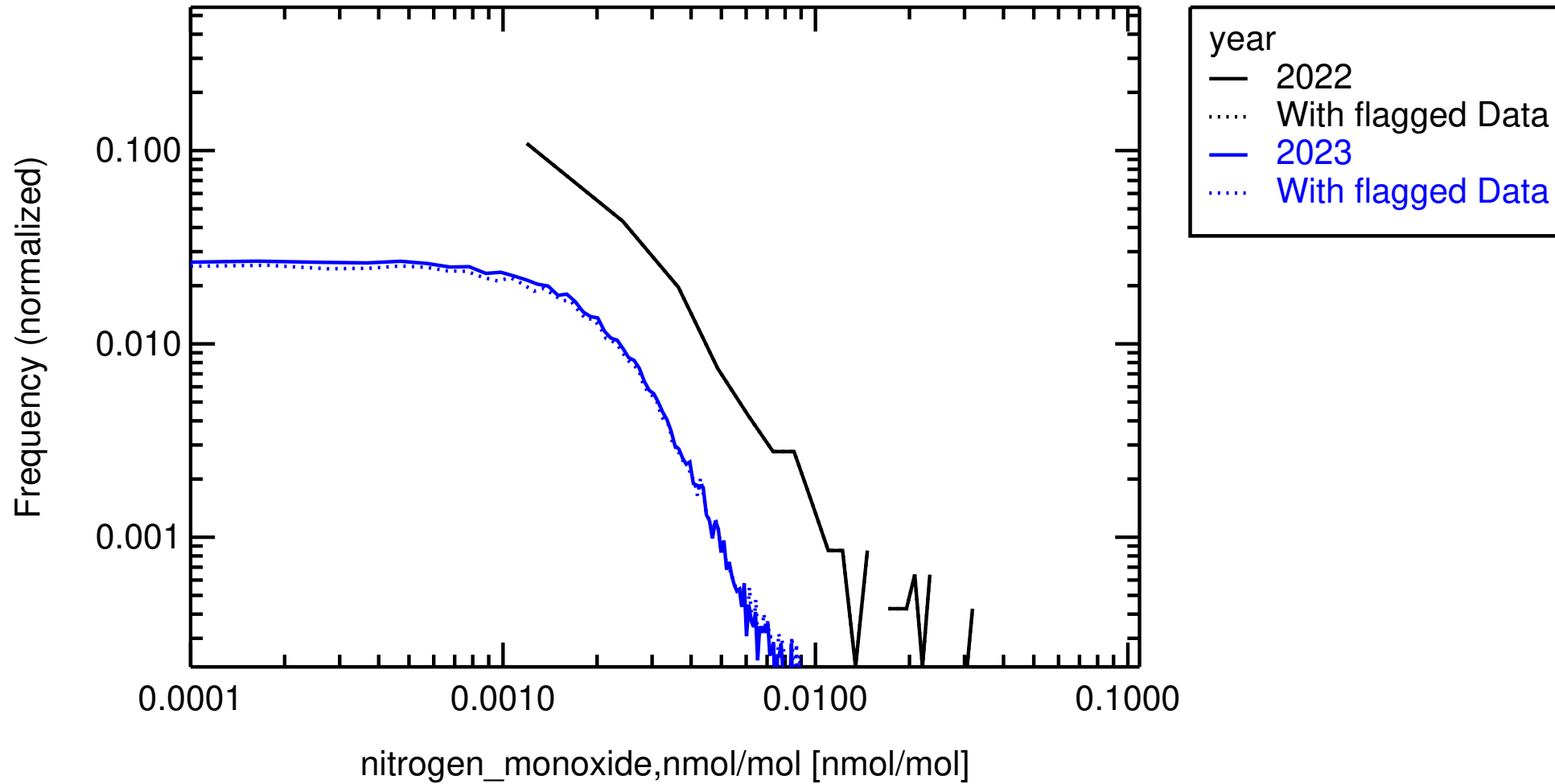
# Histogram

CV0001G , Cape Verde Atmospheric Observatory



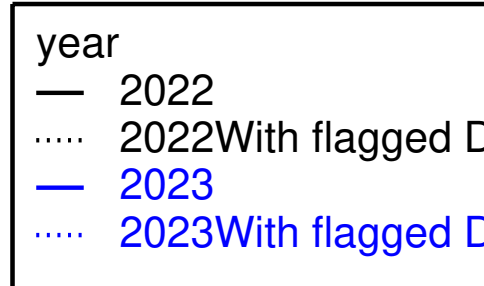
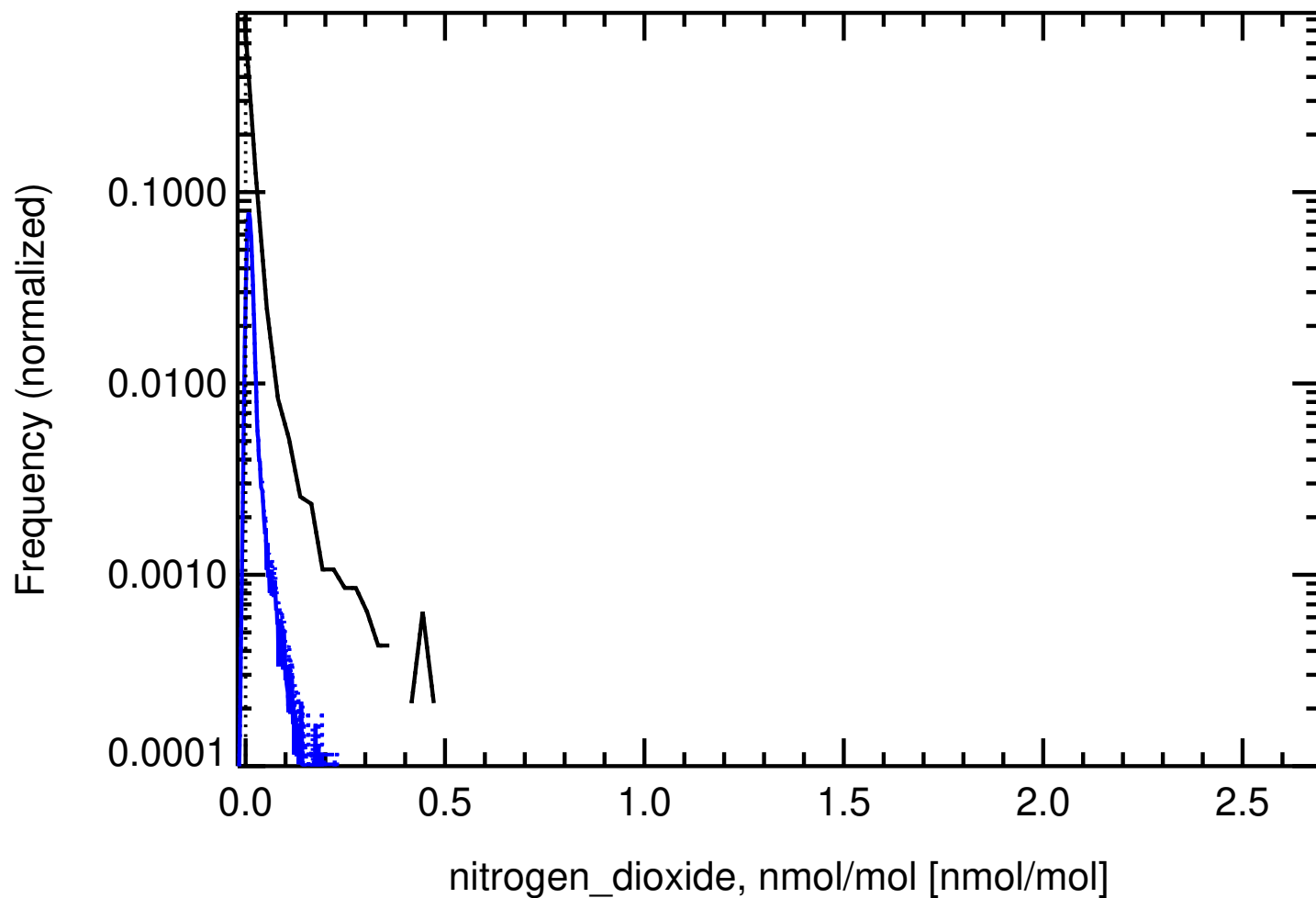
# Histogram

CV0001G , Cape Verde Atmospheric Observatory



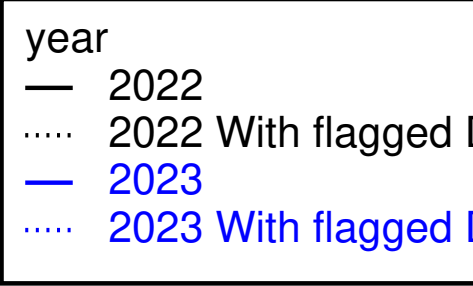
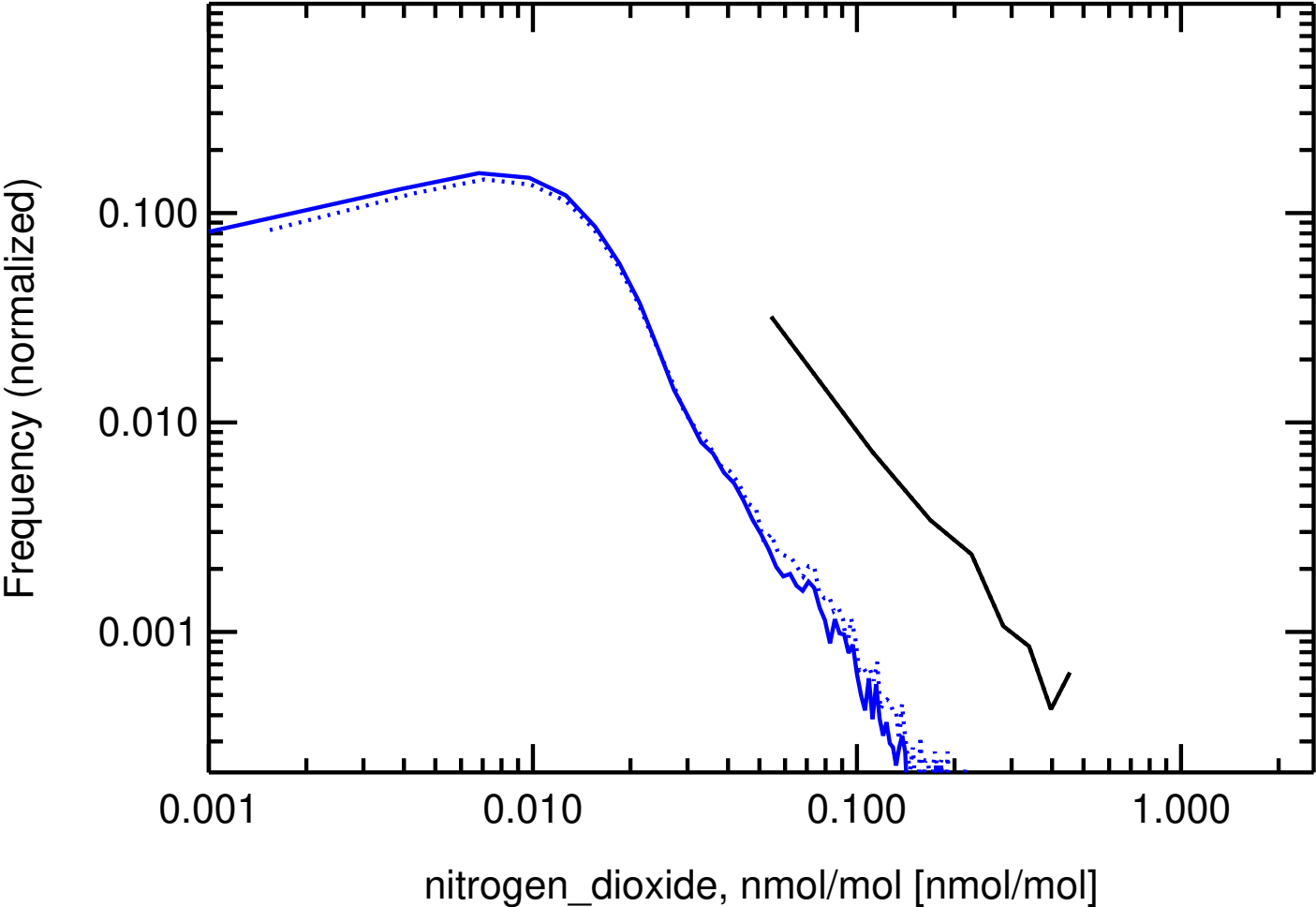
# Histogram

CV0001G , Cape Verde Atmospheric Observatory



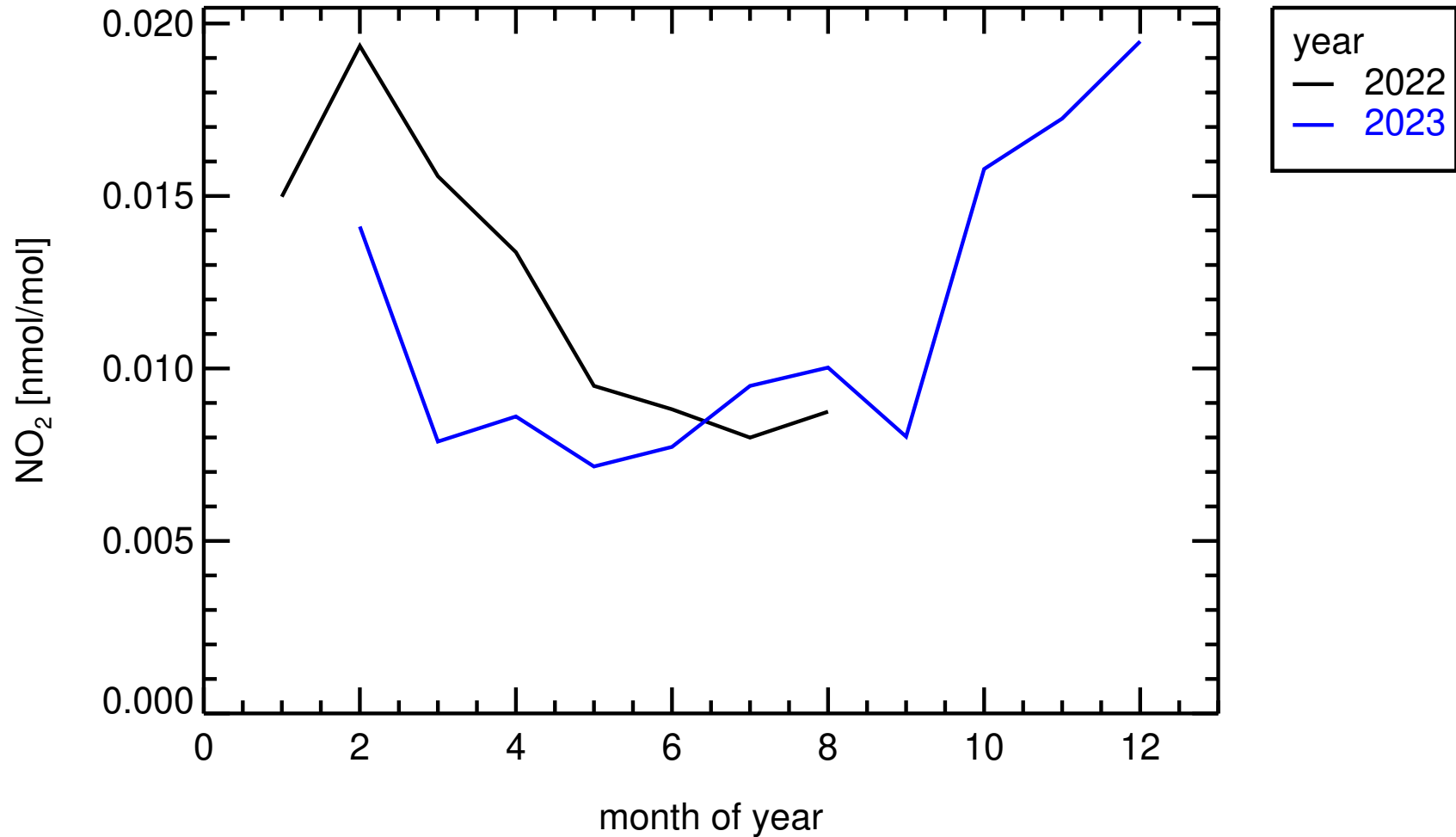
# Histogram

CV0001G , Cape Verde Atmospheric Observatory



monthly medians

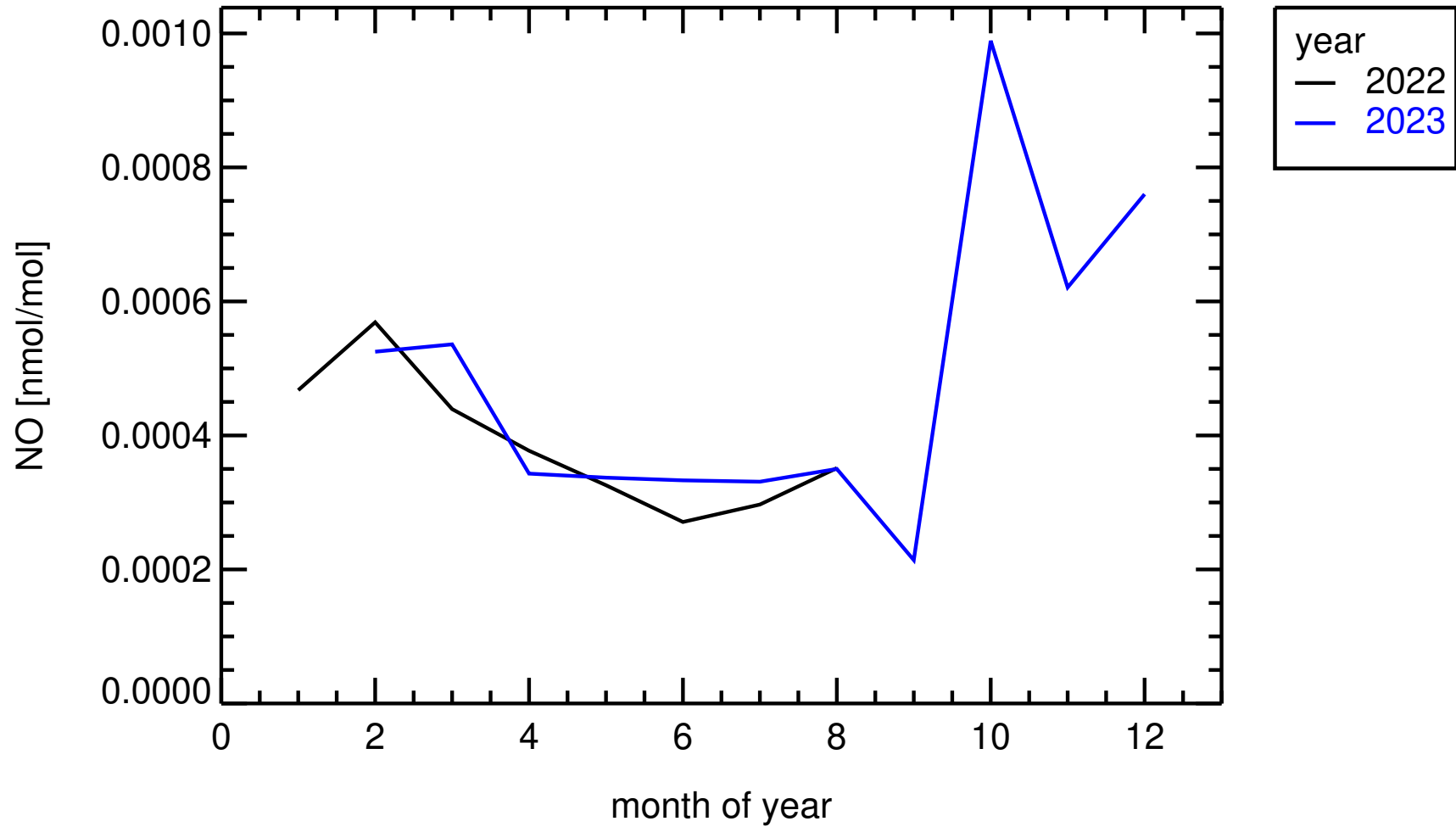
CV0001G , Cape Verde Atmospheric Observatory



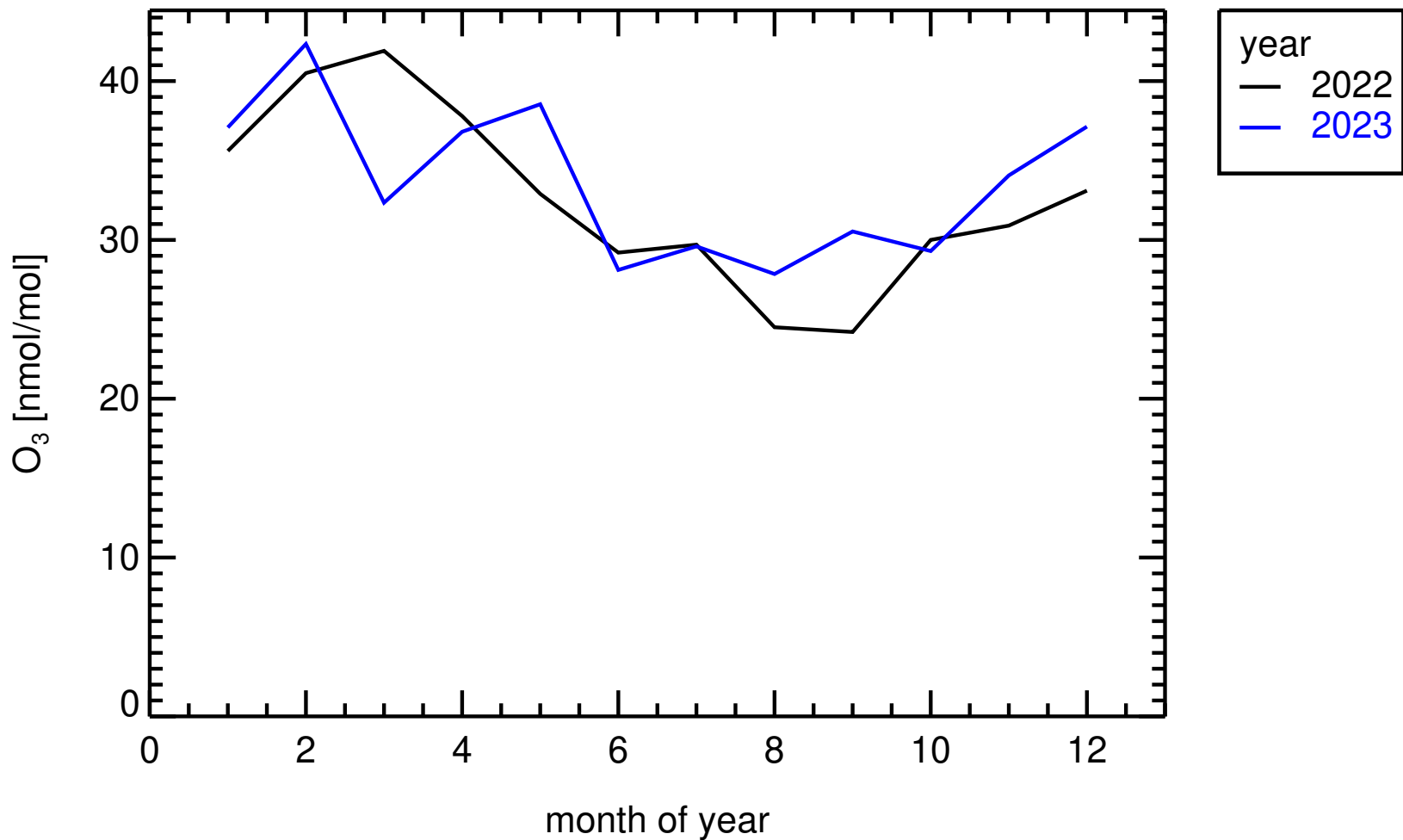


monthly medians

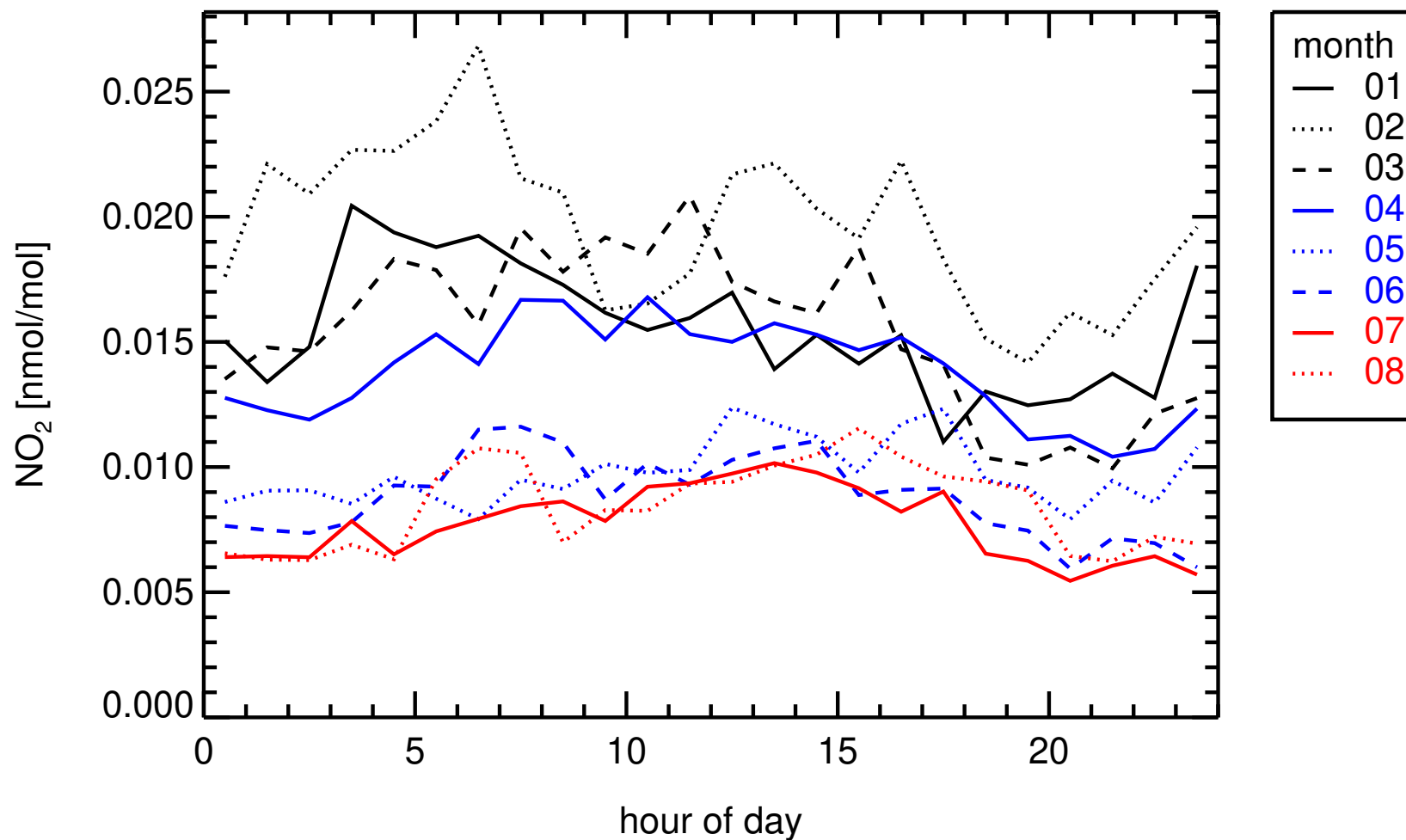
CV0001G , Cape Verde Atmospheric Observatory



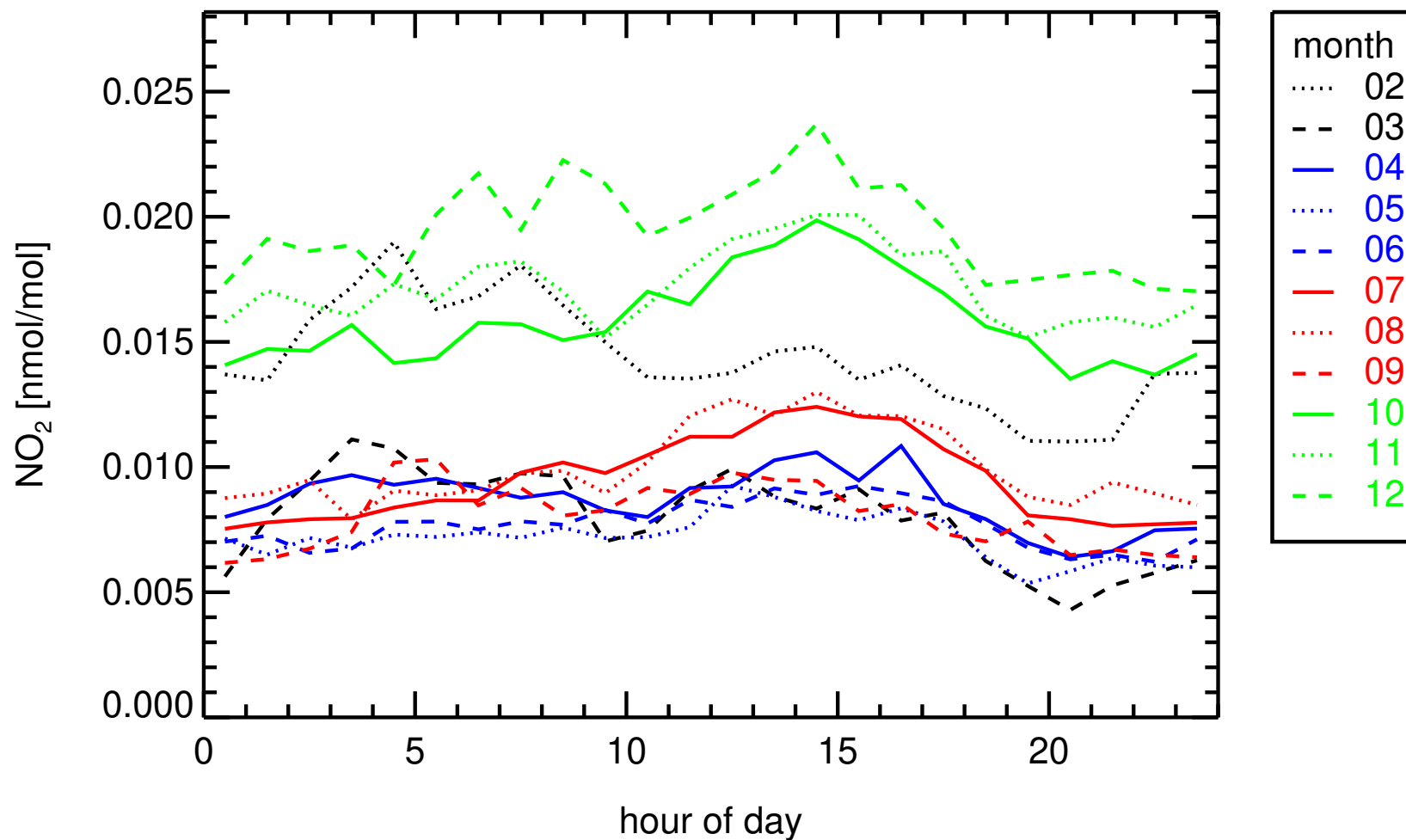
monthly medians  
CV0001G , Cape Verde Atmospheric Observatory



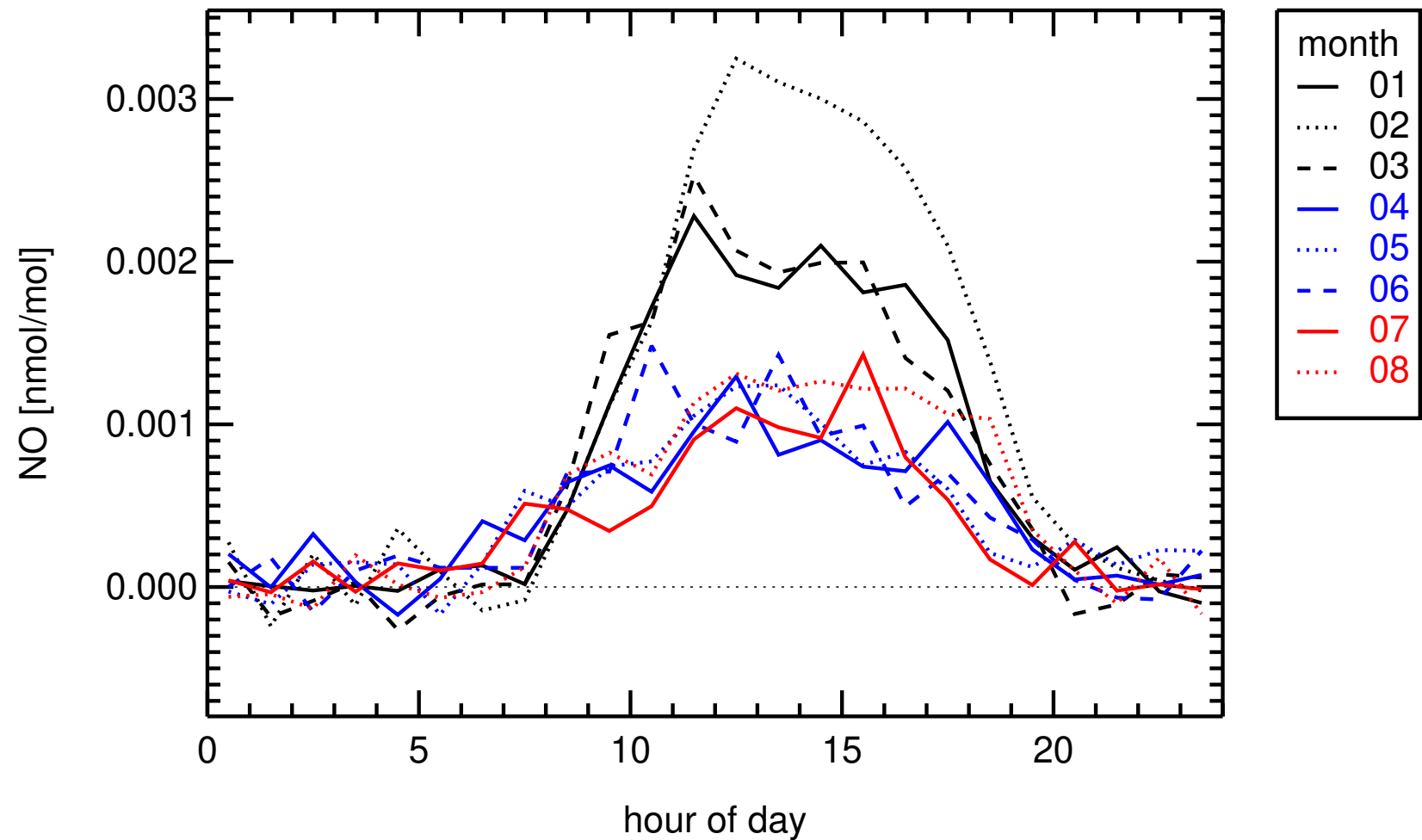
hourly medians 2022  
CV0001G , Cape Verde Atmospheric Observatory



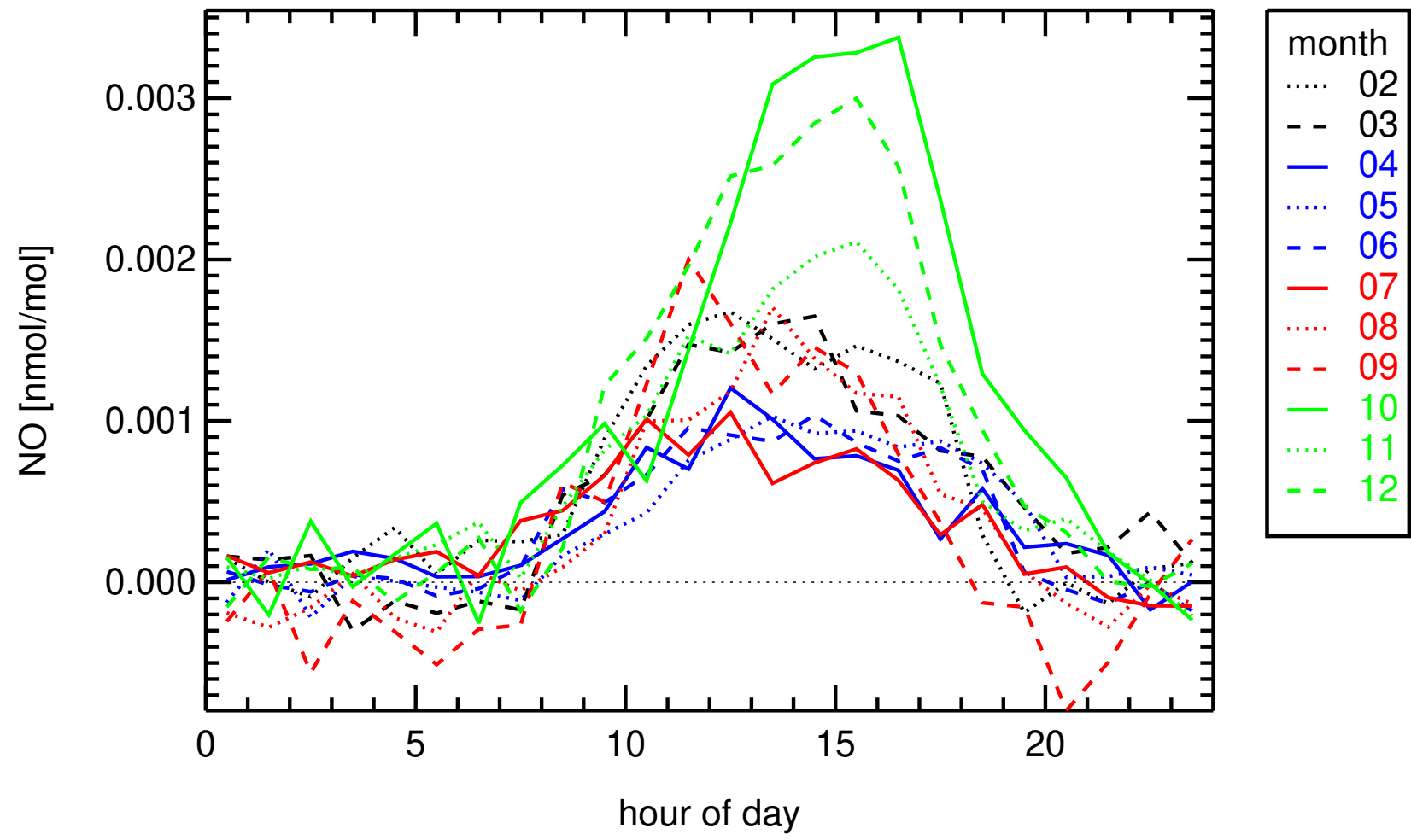
hourly medians 2023  
CV0001G , Cape Verde Atmospheric Observatory



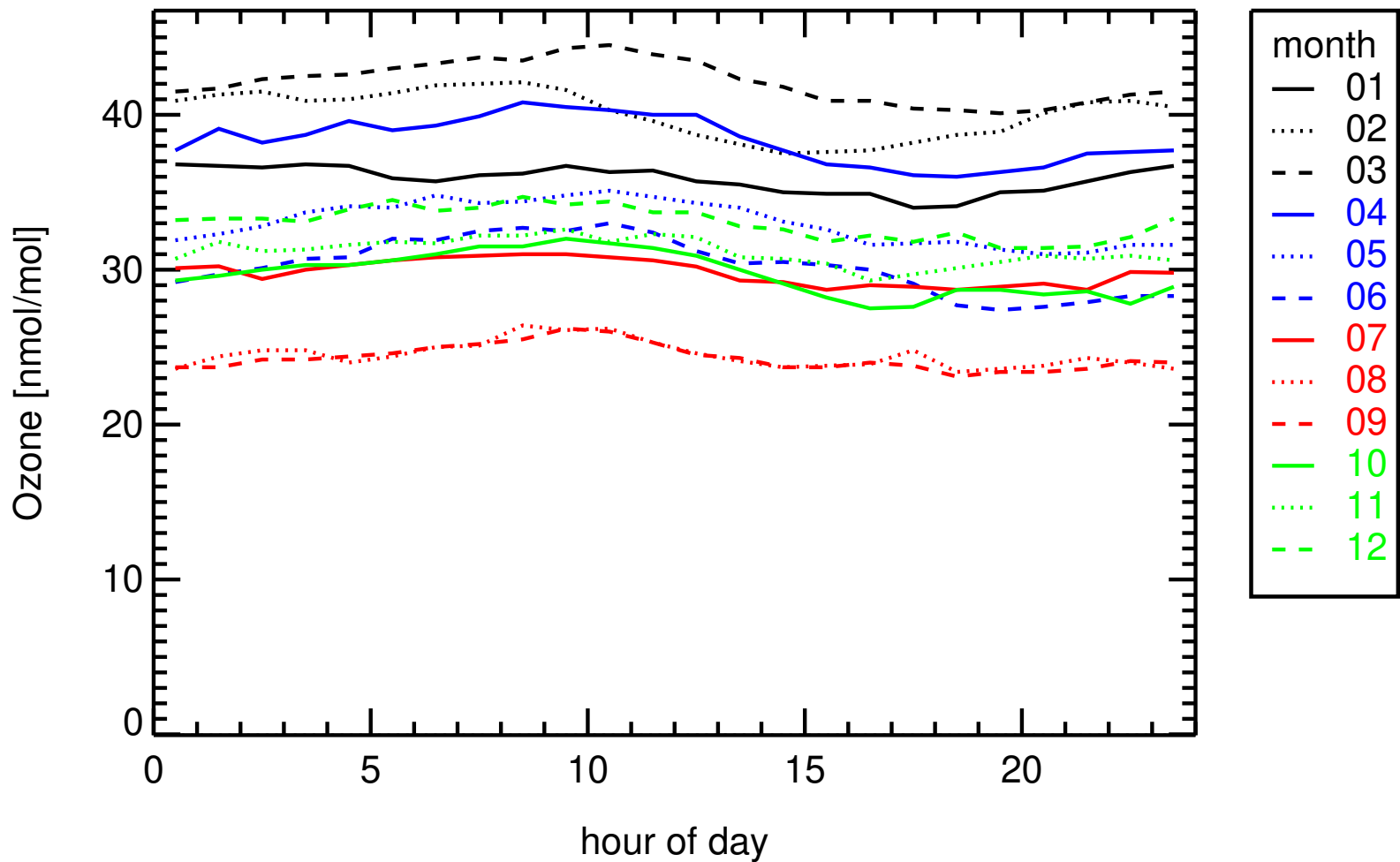
hourly medians 2022  
CV0001G , Cape Verde Atmospheric Observatory



hourly medians 2023  
CV0001G , Cape Verde Atmospheric Observatory



hourly medians 2022  
CV0001G , Cape Verde Atmospheric Observatory



hourly medians 2023  
CV0001G , Cape Verde Atmospheric Observatory

