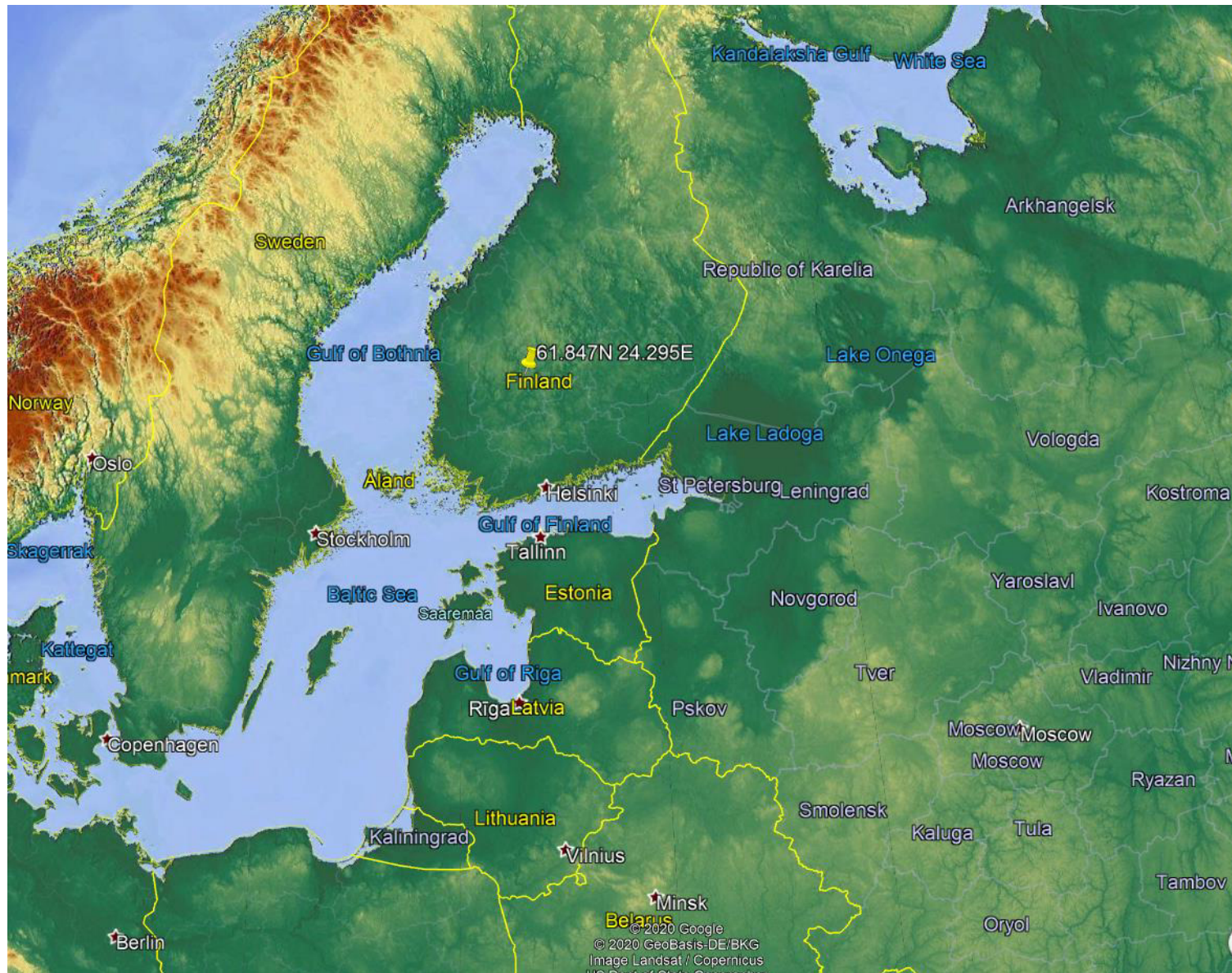


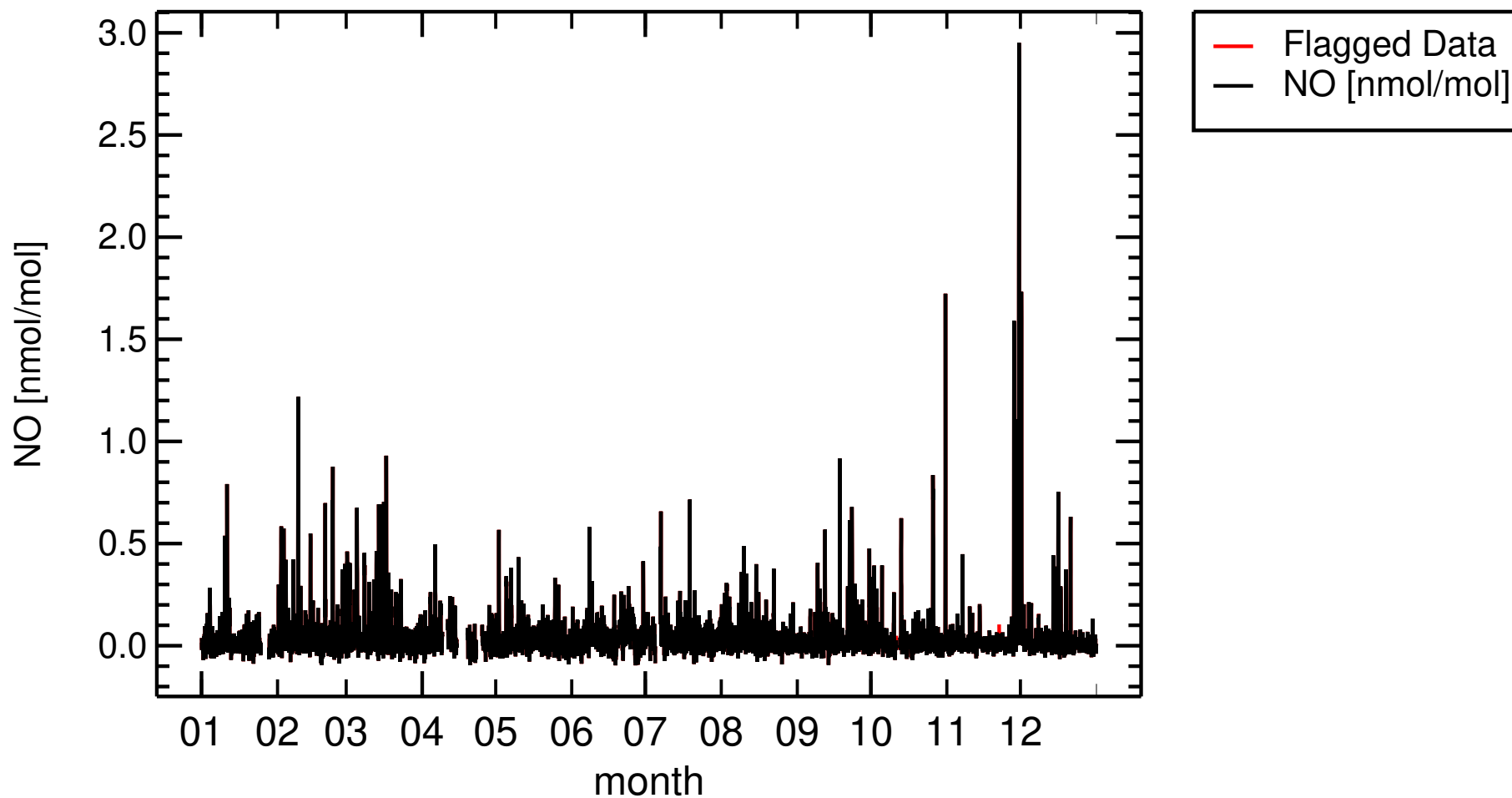
Station WDCA-ID: GAWAFI__SMR
Station GAW-Name: Hyytiälä
Station GAW-ID: SMRS
Station latitude: 61.847
Station longitude: 24.295
Station altitude: 179m
Station land use: Forest

Data have already been corrected for humidity and ozone interference
Offset is zero within uncertainty. No extra correction needed



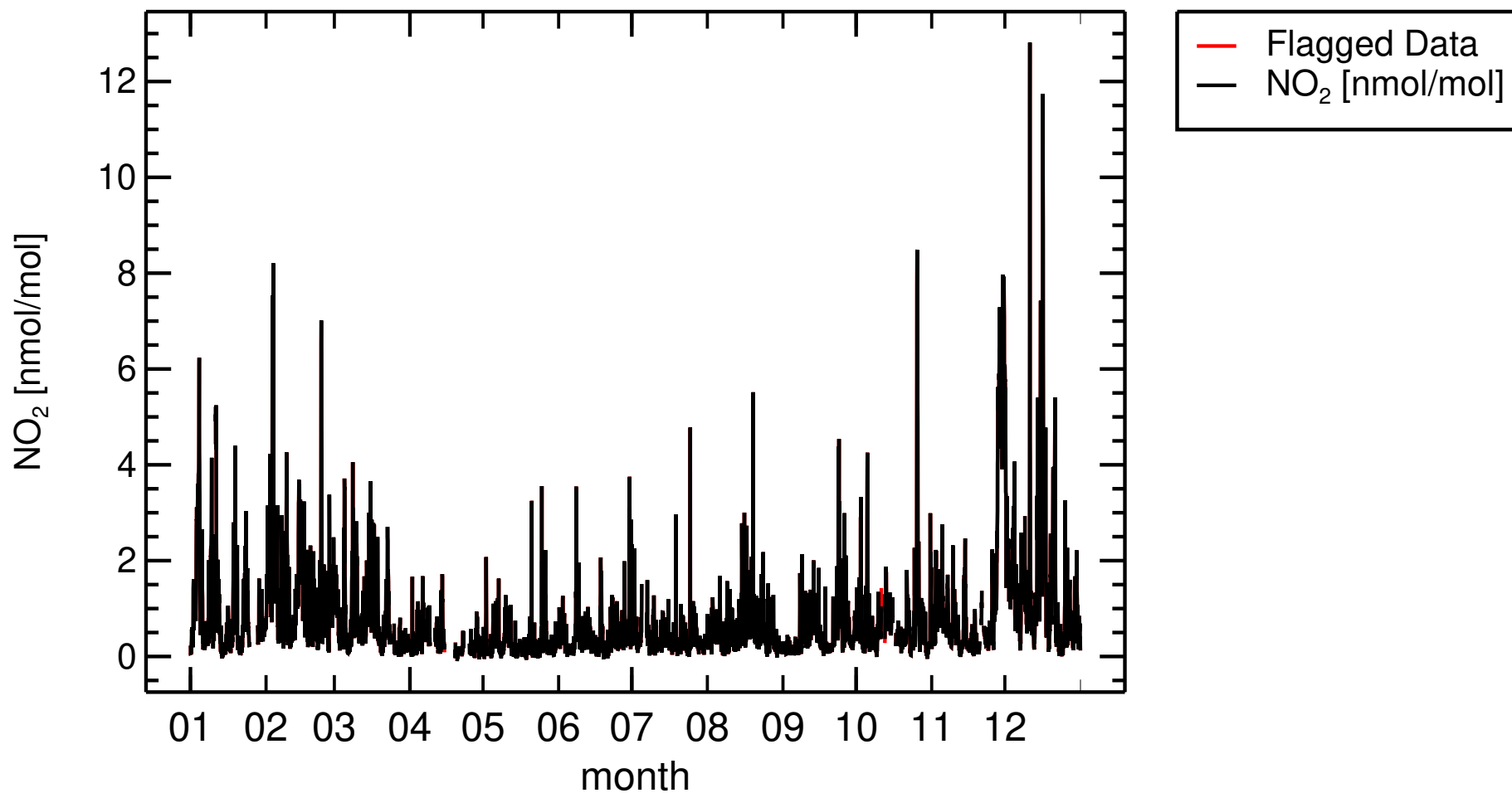
2022

FI0050R , Hyytiaelae



2022

FI0050R , Hyytiaelae



ACTRIS DATA WS 2022/04/28

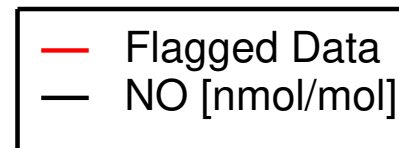
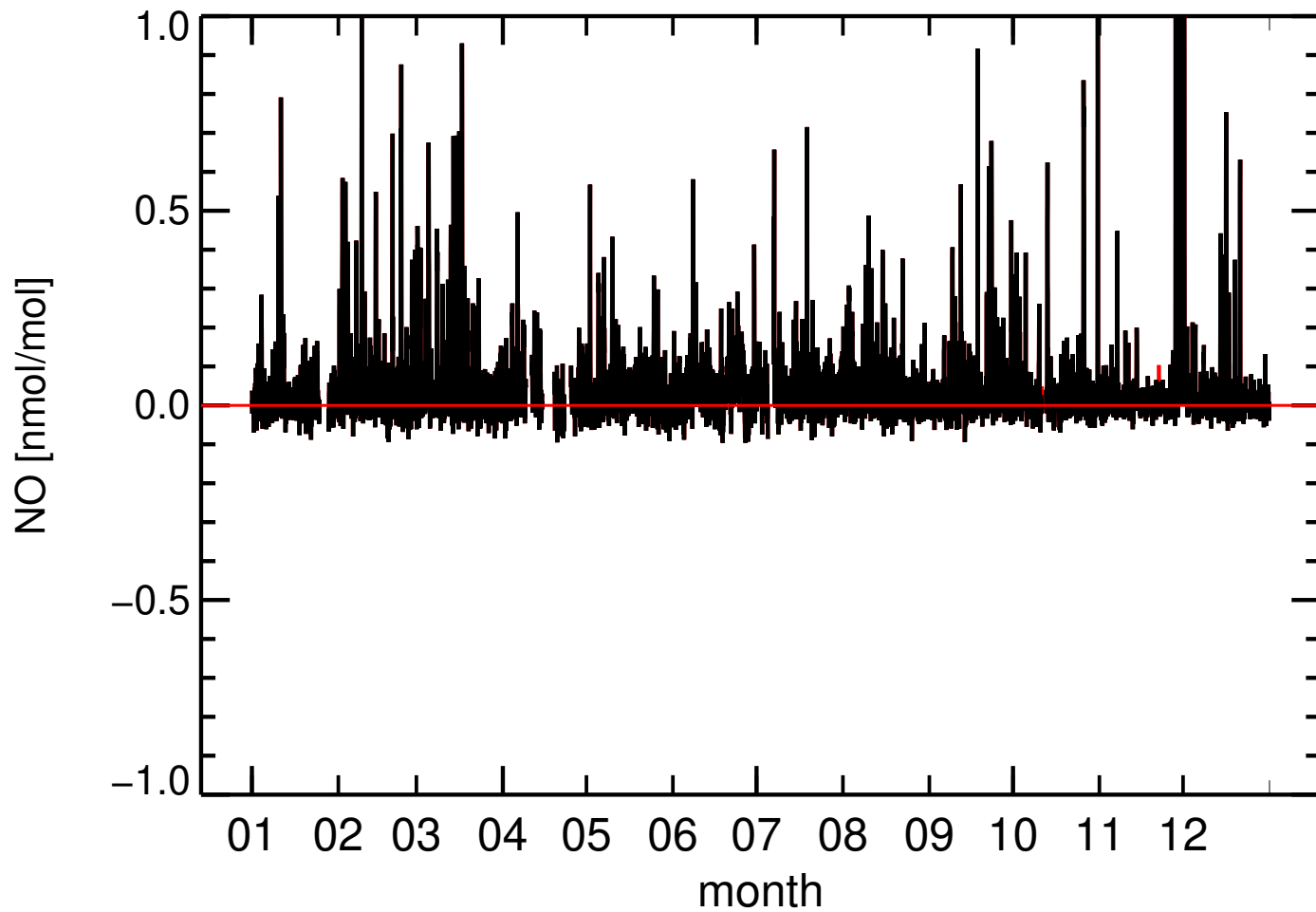
ACTRIS DATA WS 2023/04/19

4 / 21

4 / 21

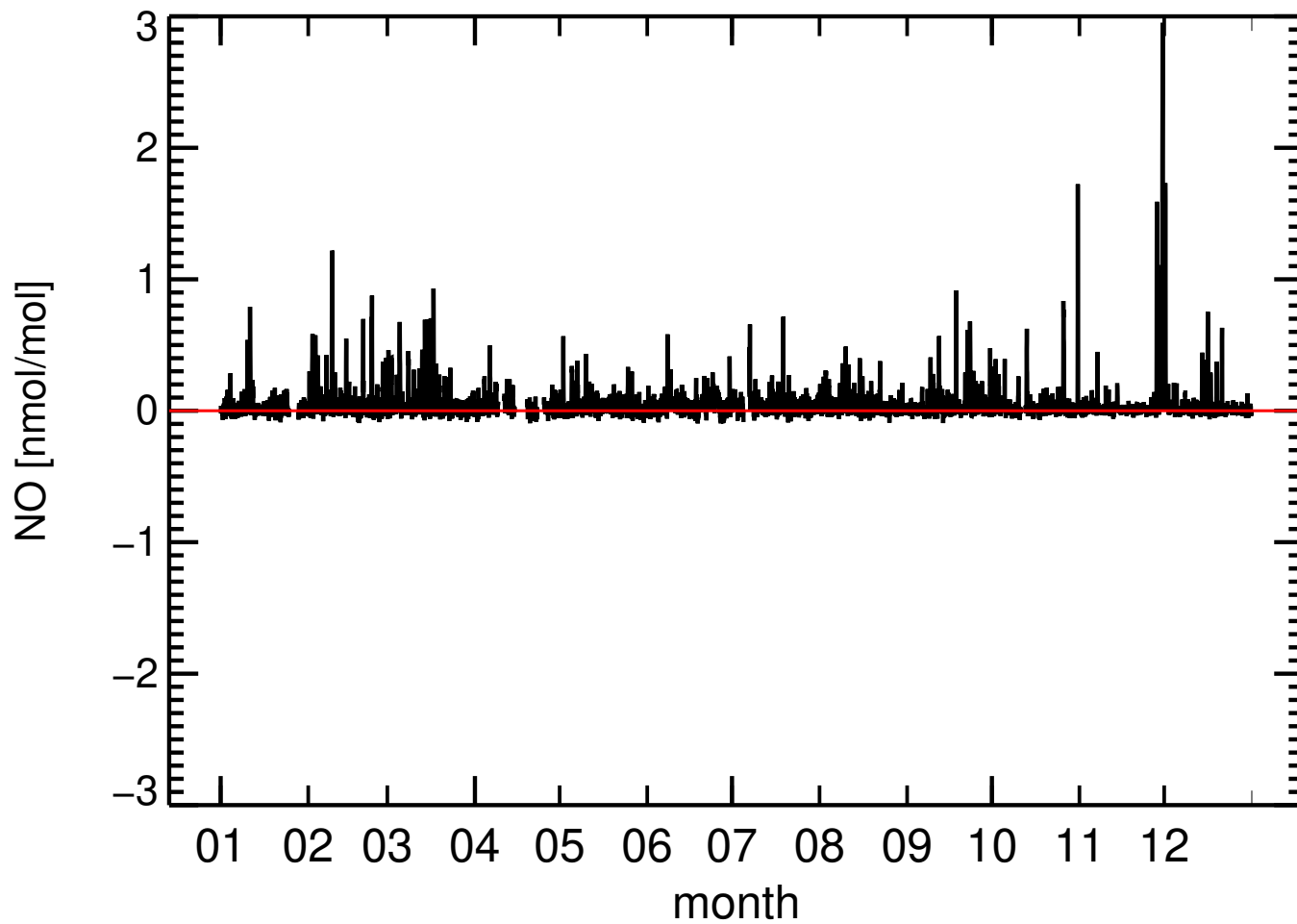
2022

FI0050R , Hyytiaelae



2022

FI0050R , Hyytiaelae



ACTRIS DATA WS 2022/04/28

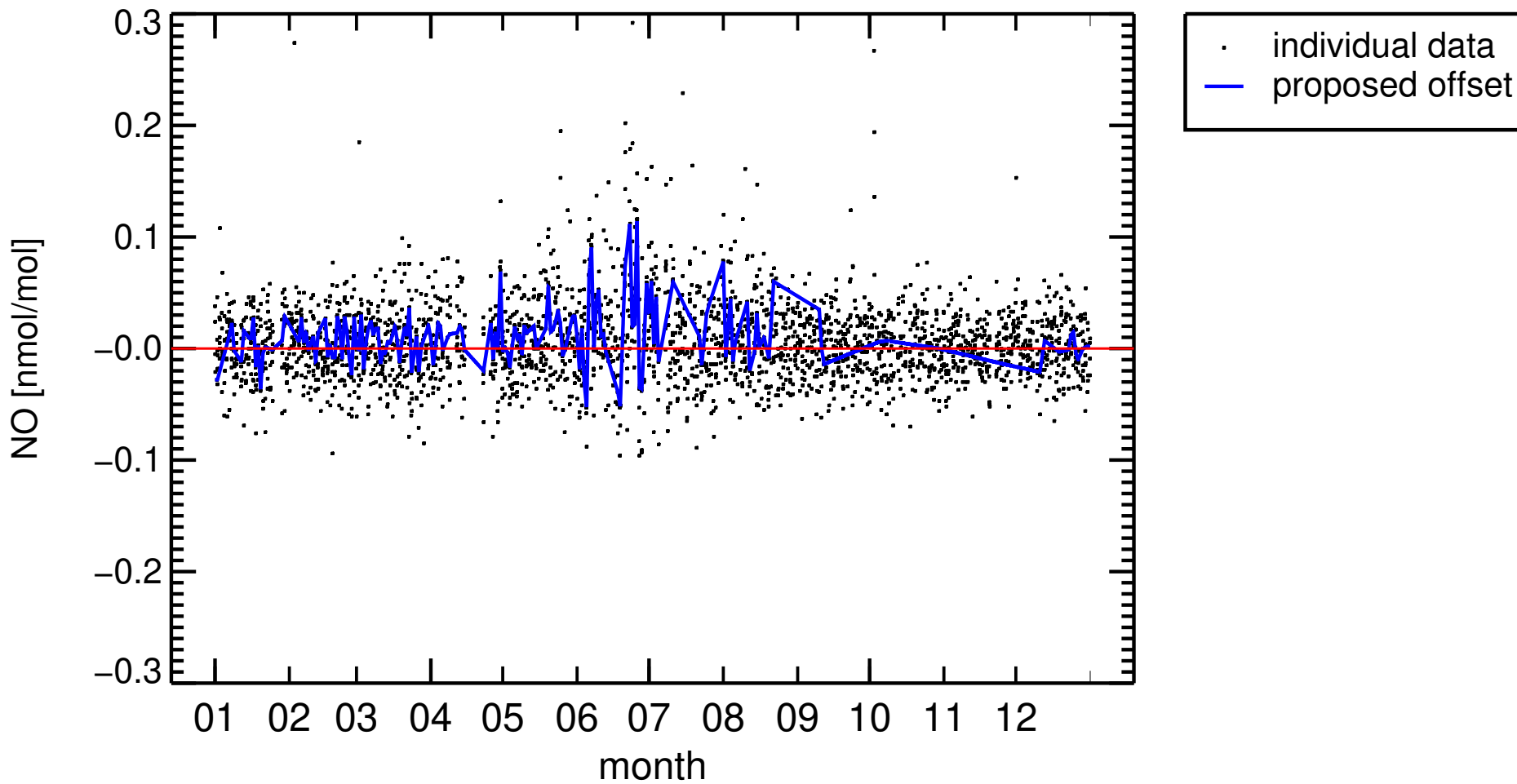
6 / 21

ACTRIS DATA WS 2023/04/19

6 / 21

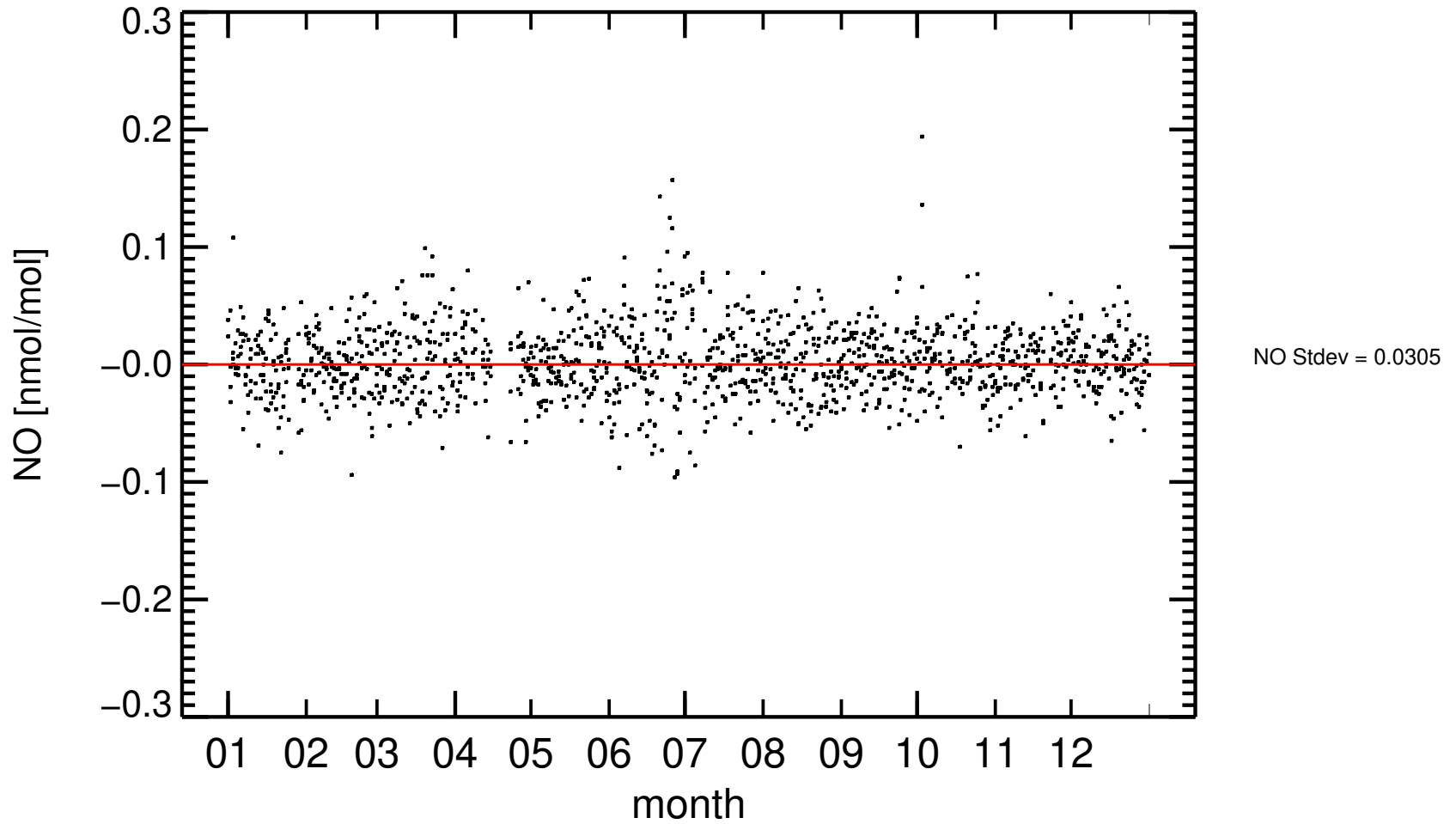
2022

FI0050R , Hyytiaelae



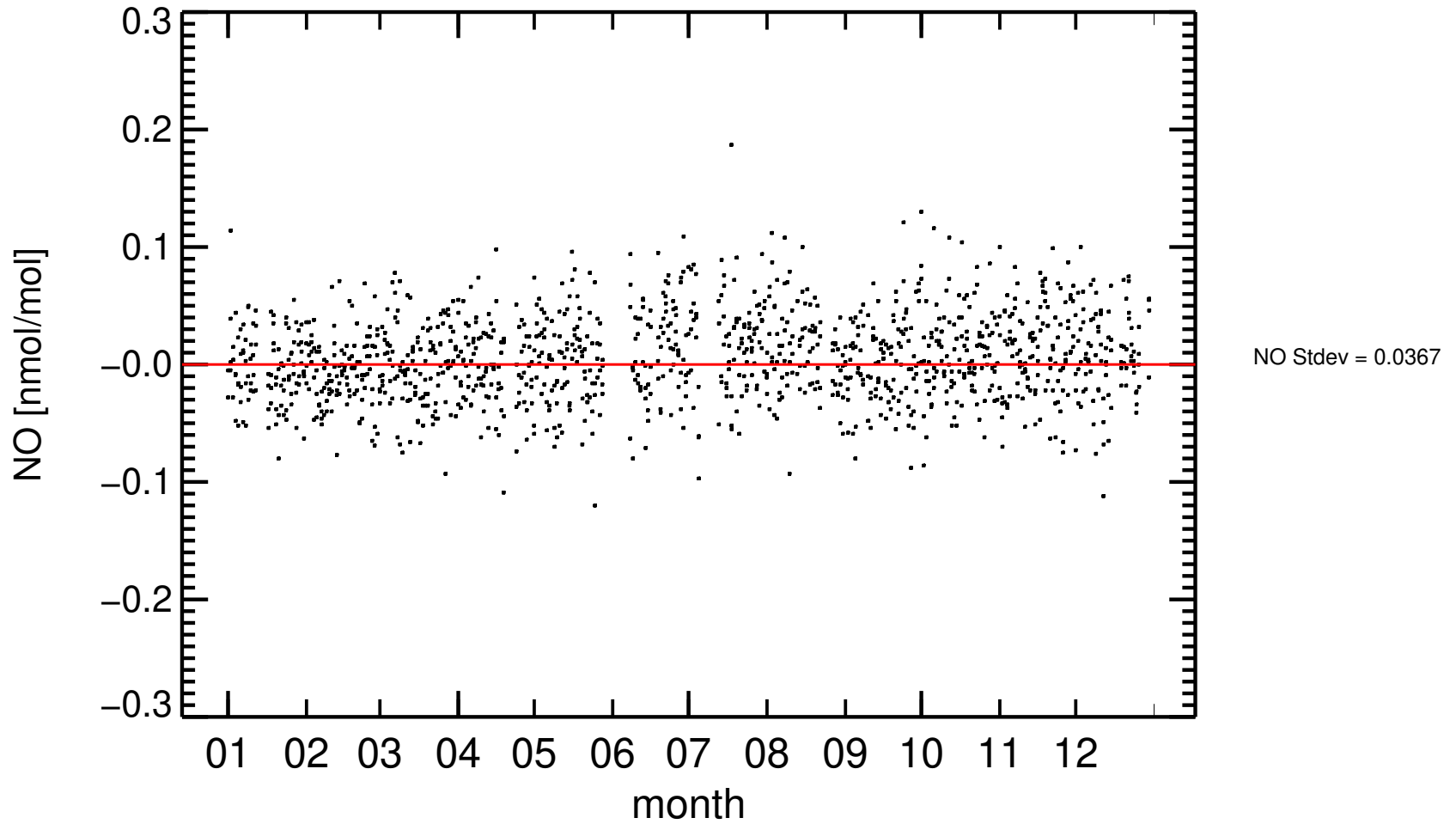
2022 , 22:00–02:00 only

FI0050R , Hyytiaelae



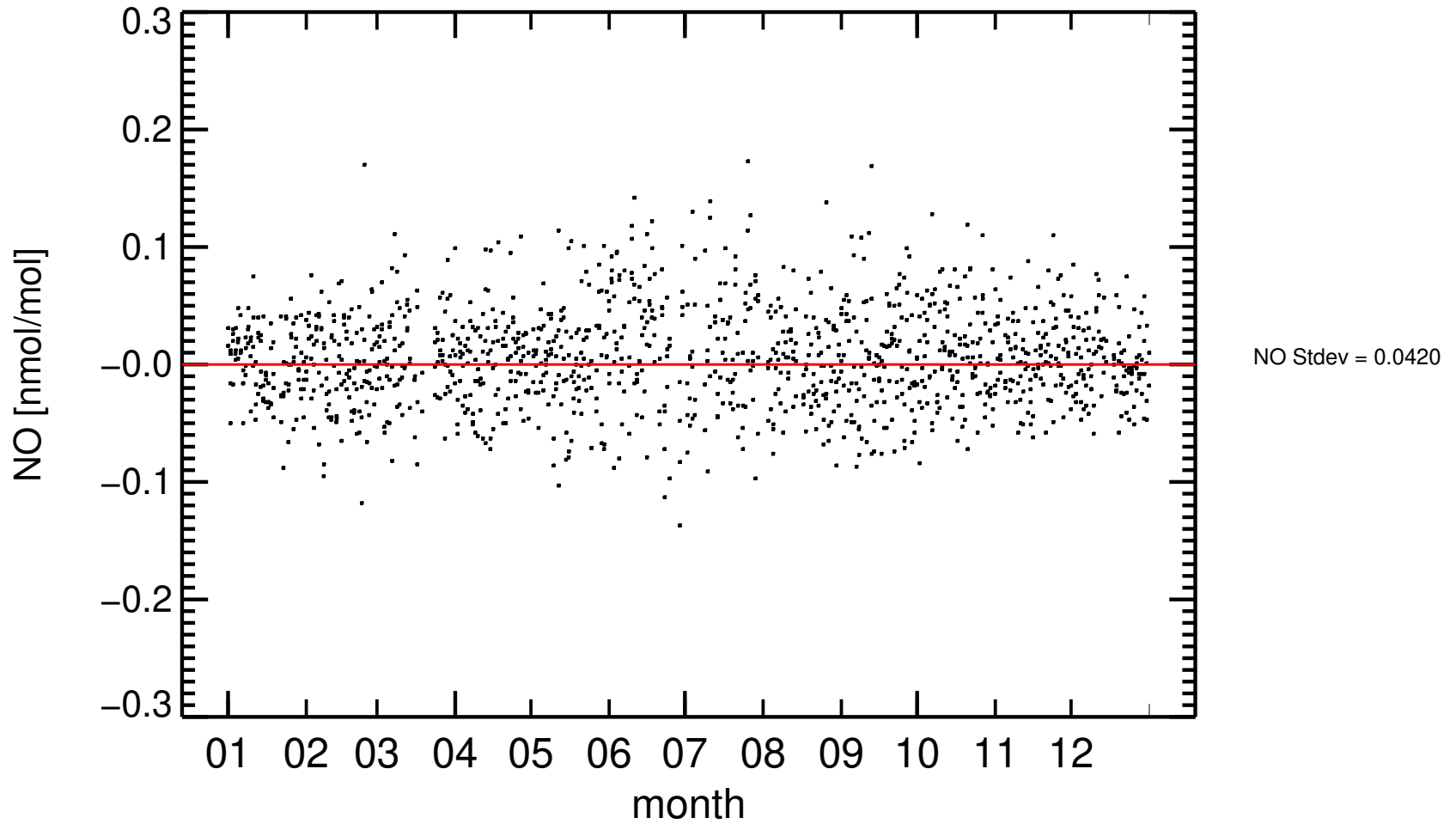
2020 , 22:00–02:00 only

FI0050R , Hyytiaelae

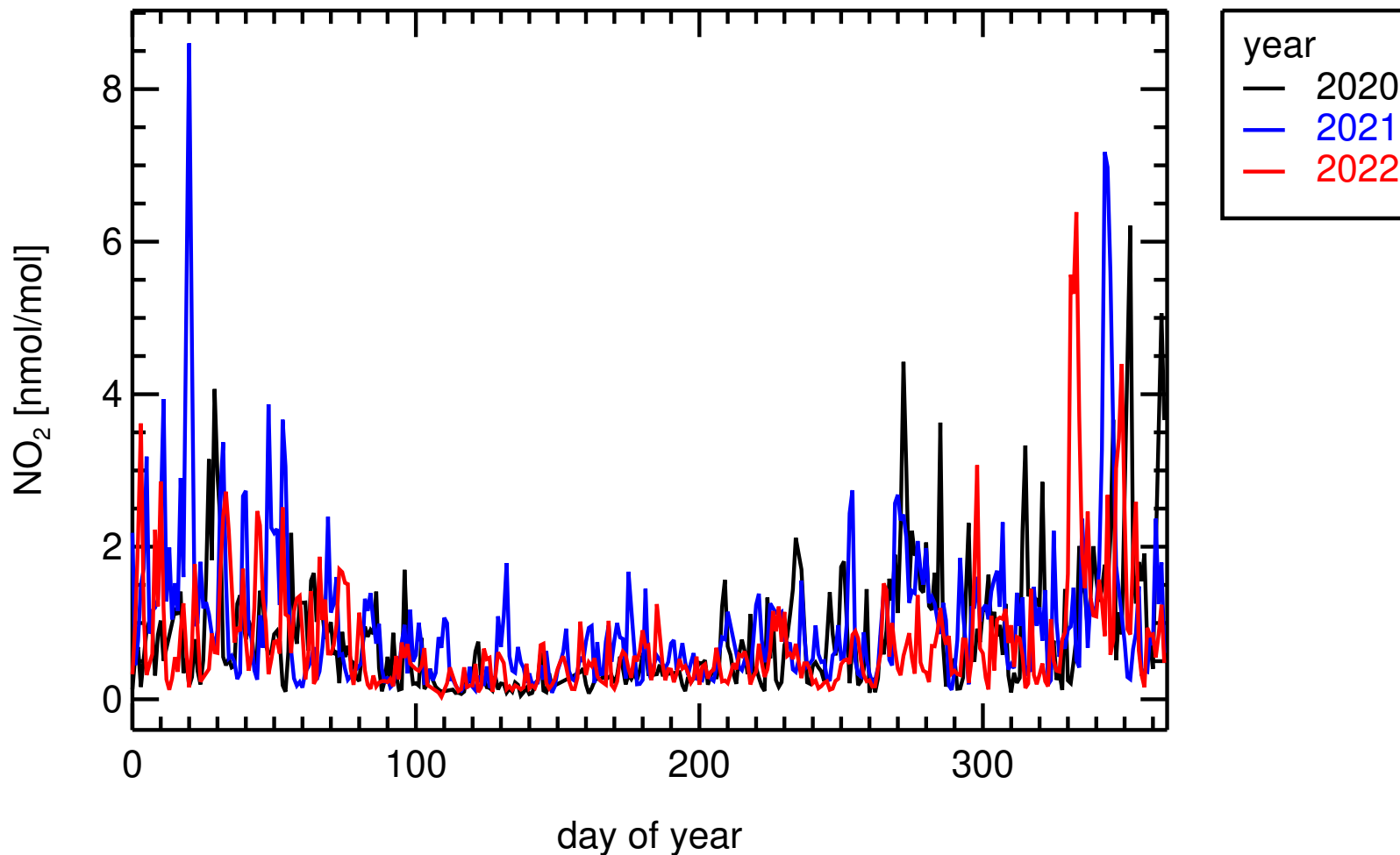


2021 , 22:00–02:00 only

FI0050R , Hyytiaelae



daily averages
FI0050R , Hyytiaelae



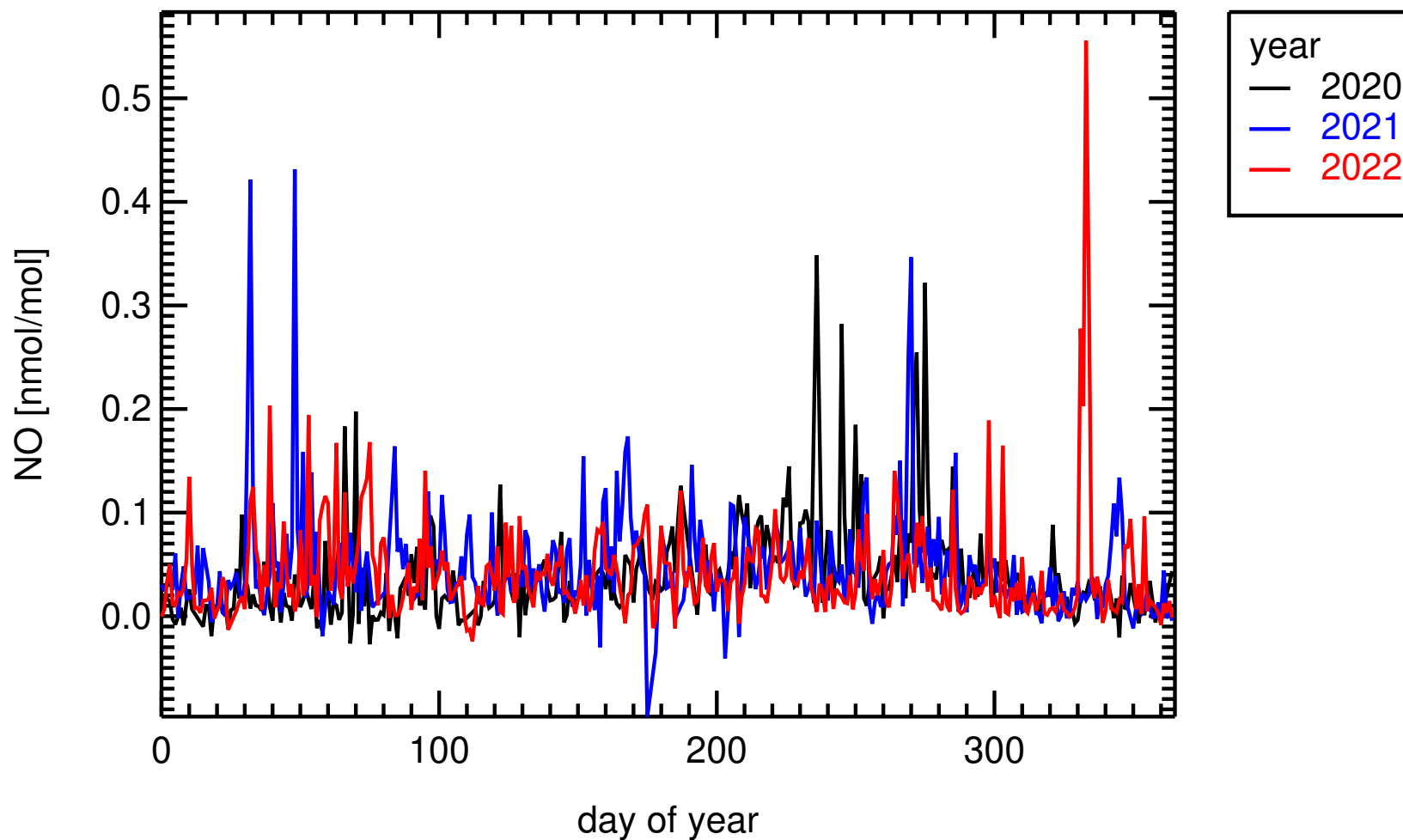
ACTRIS DATA WS 2022/04/28
11 / 21

dioxide, nmol/mol, Statistics=arithmetic mean, Calibration scale=NPL+GPT MEAN = 0.7536 nmol/mol

ACTRIS DATA WS 2023/04/19

11 / 21

daily averages
FI0050R , Hyytiaelae



ACTRIS DATA WS 2022/04/28
12 / 21

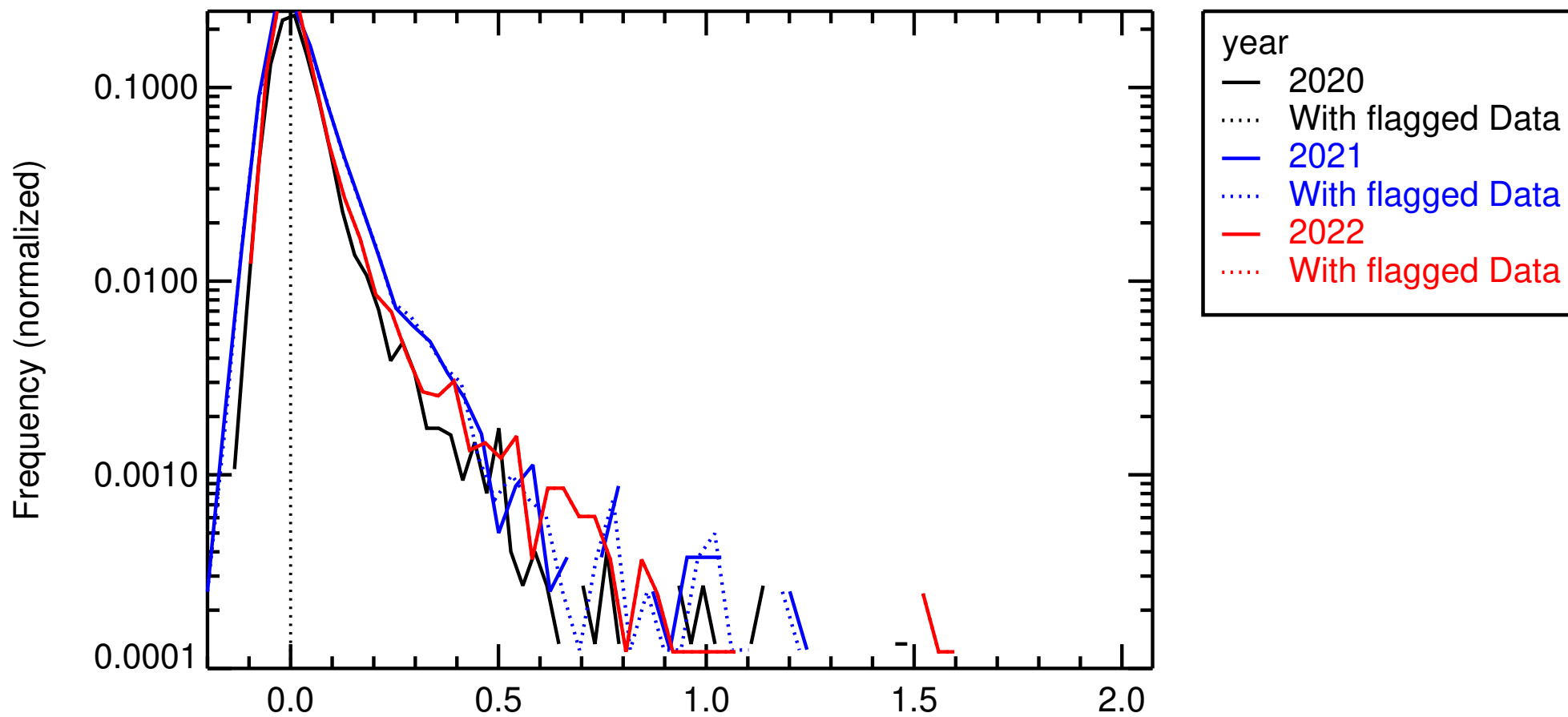
_monoxide, nmol/mol, Statistics=arithmetic mean, Calibration scale=NPL MEAN = 0.0423 nmol/mol

ACTRIS DATA WS 2023/04/19

12 / 21

Histogram

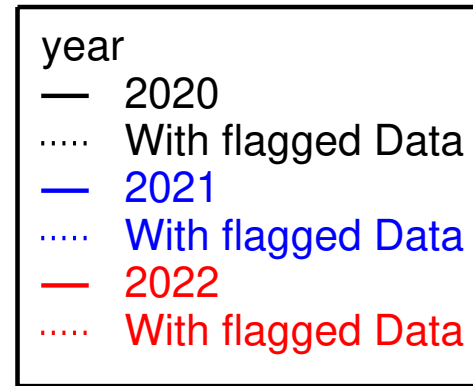
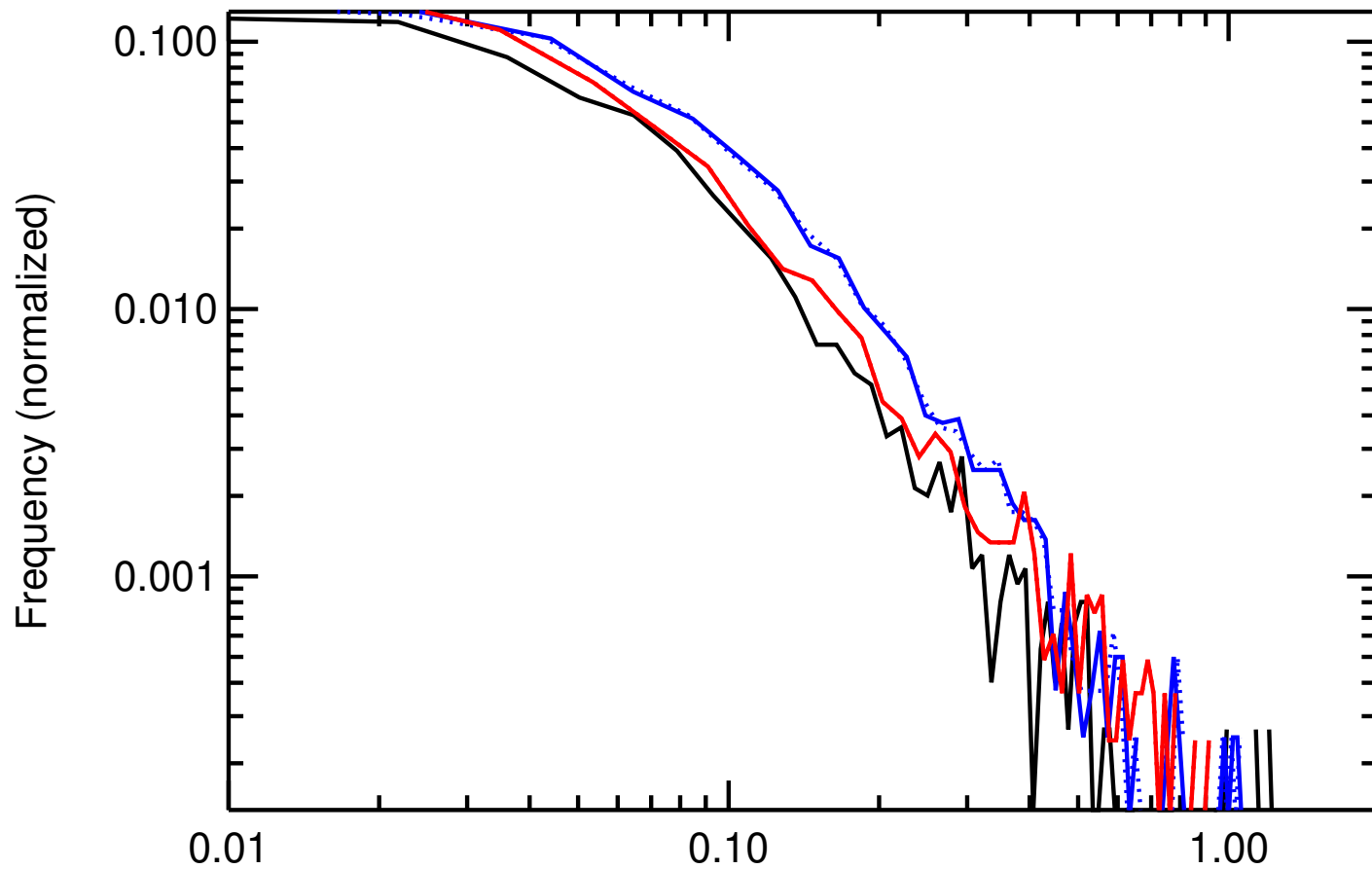
FI0050R , Hyytiaelae



nitrogen_monoxide, nmol/mol, Statistics=arithmetic mean, Calibration scale=NPL [nmol/mol]

Histogram

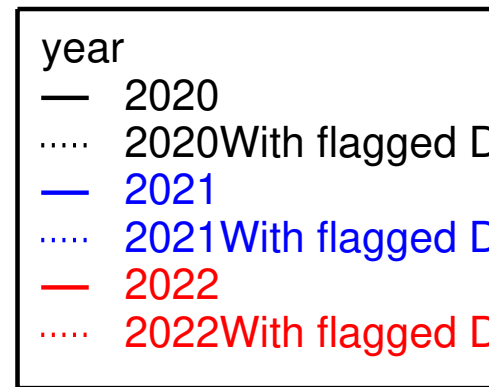
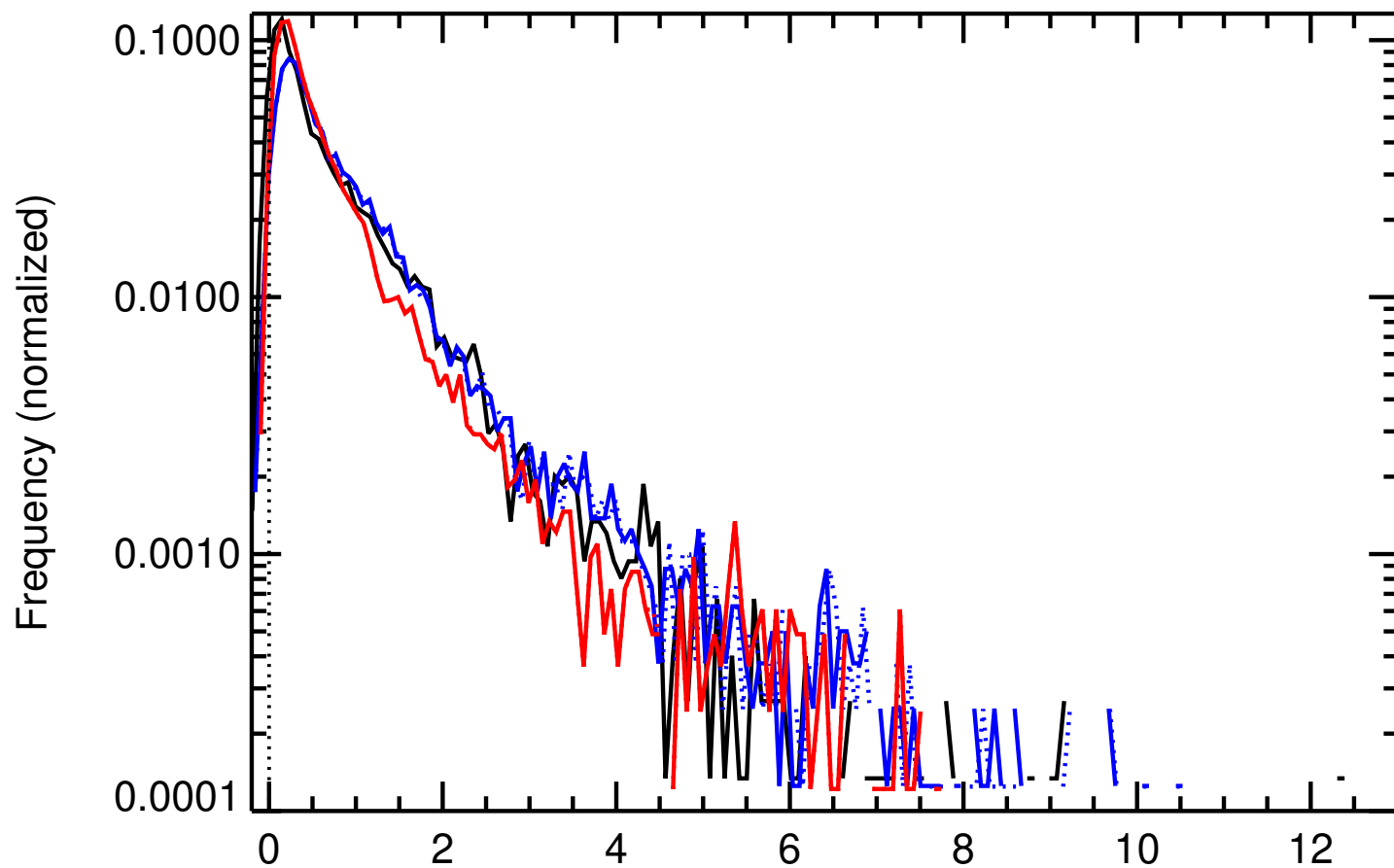
FI0050R , Hyytiaelae



nitrogen_monoxide, nmol/mol, Statistics=arithmetic mean, Calibration scale=NPL [nmol/mol]

Histogram

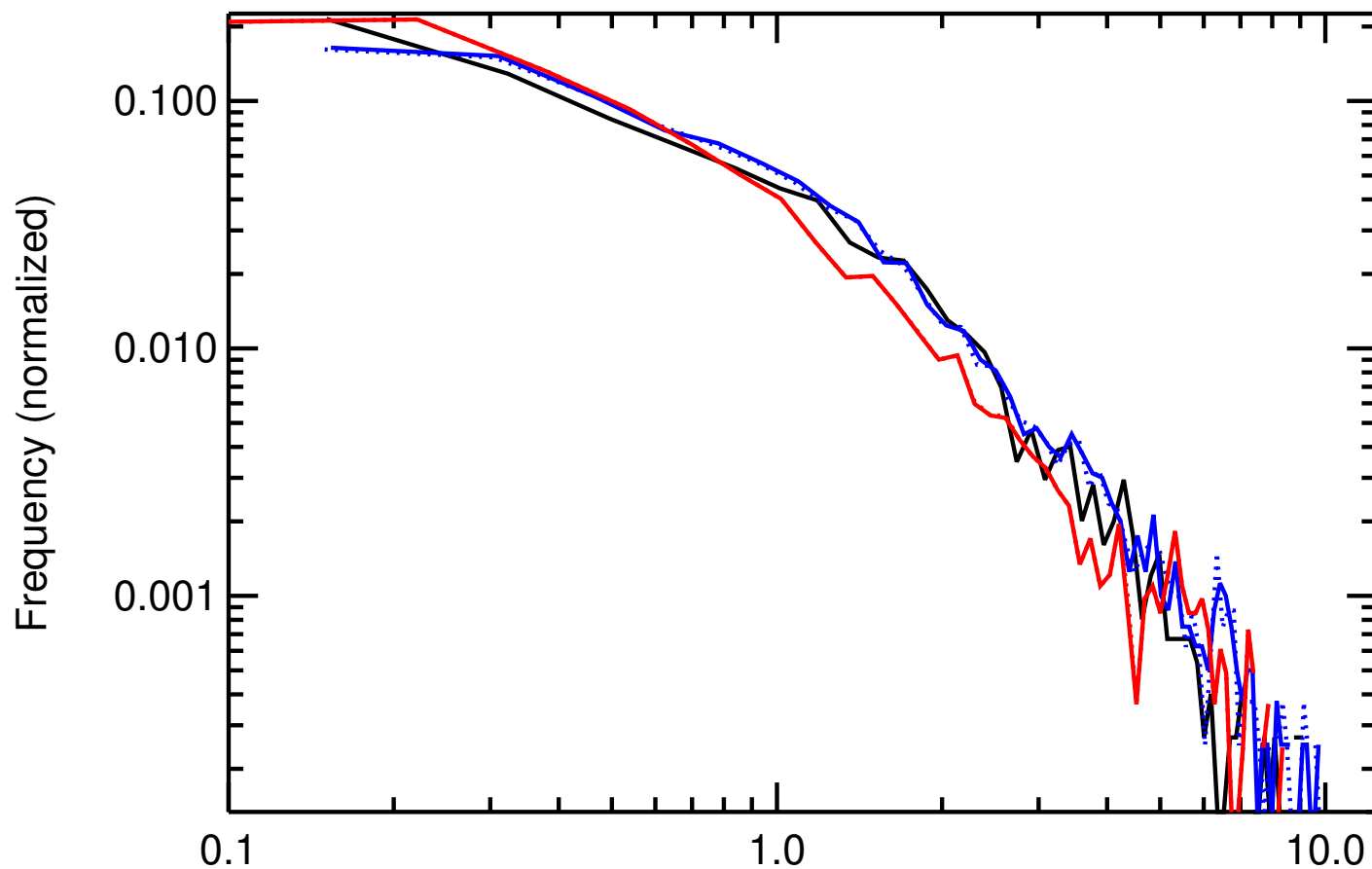
FI0050R , Hyytiaelae



nitrogen_dioxide, nmol/mol, Statistics=arithmetic mean, Calibration scale=NPL+GPT [nmol/mol]

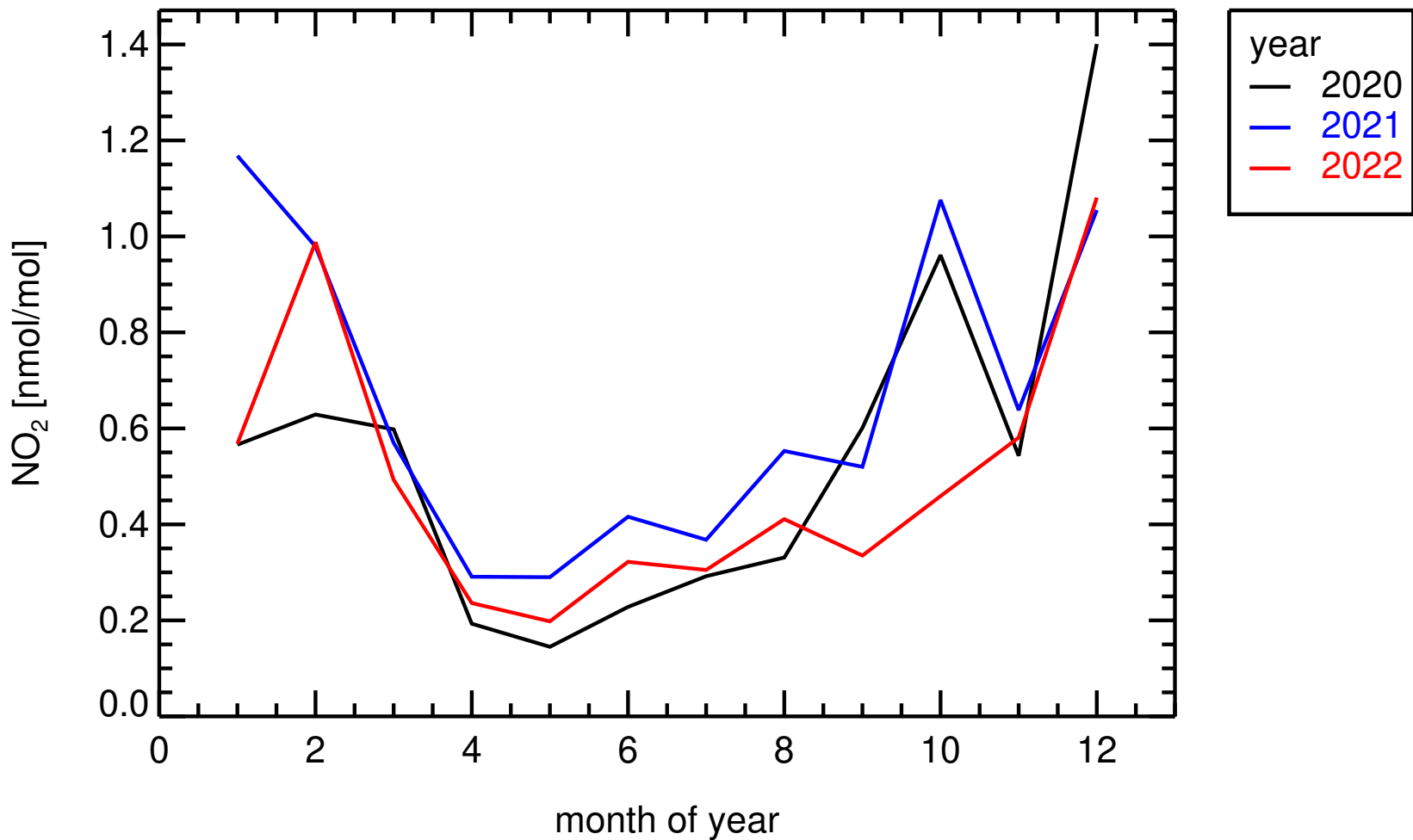
Histogram

FI0050R , Hyytiaelae

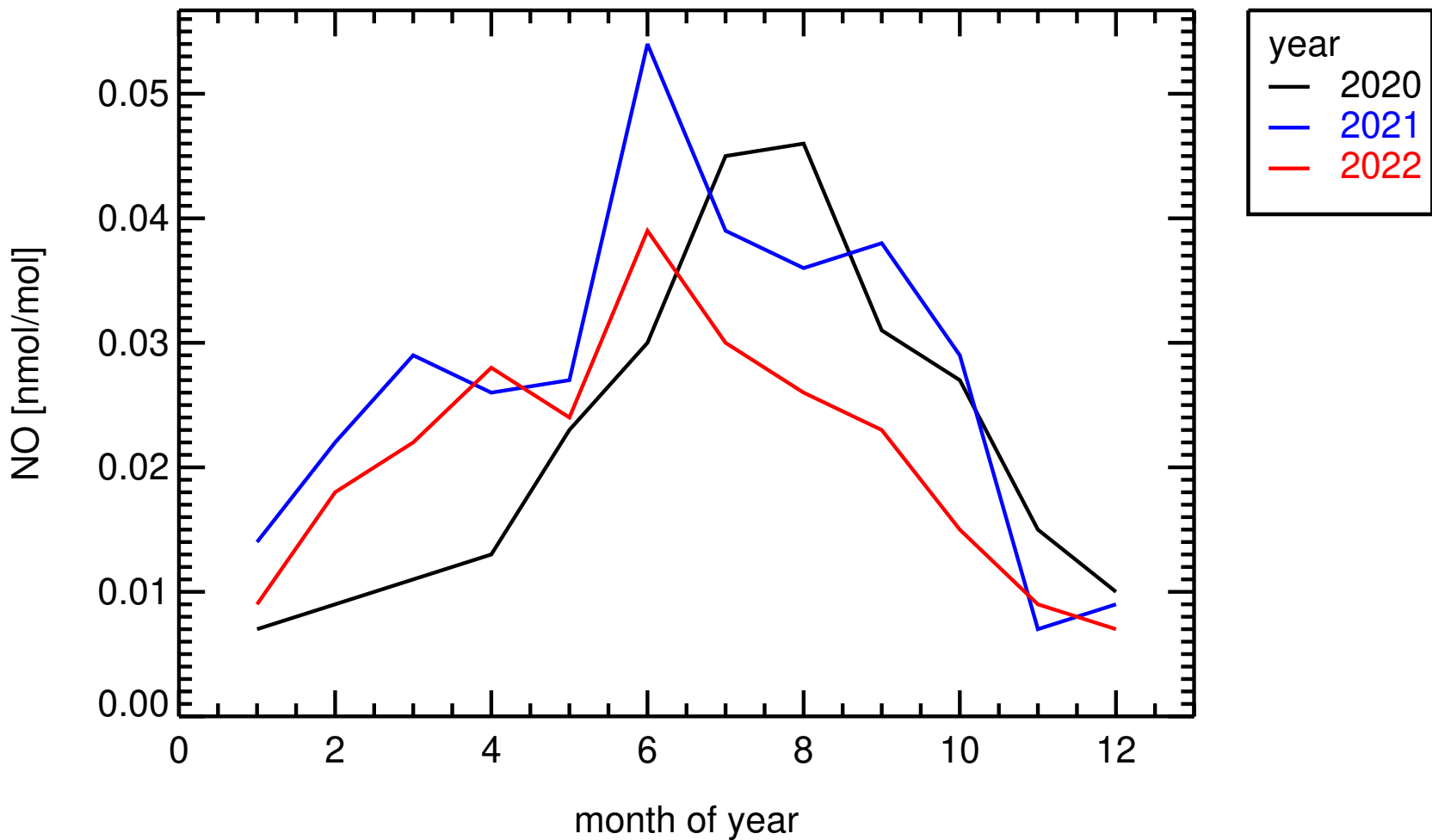


nitrogen_dioxide, nmol/mol, Statistics=arithmetic mean, Calibration scale=NPL+GPT [nmol/mol]

monthly medians
FI0050R , Hyytiaelae

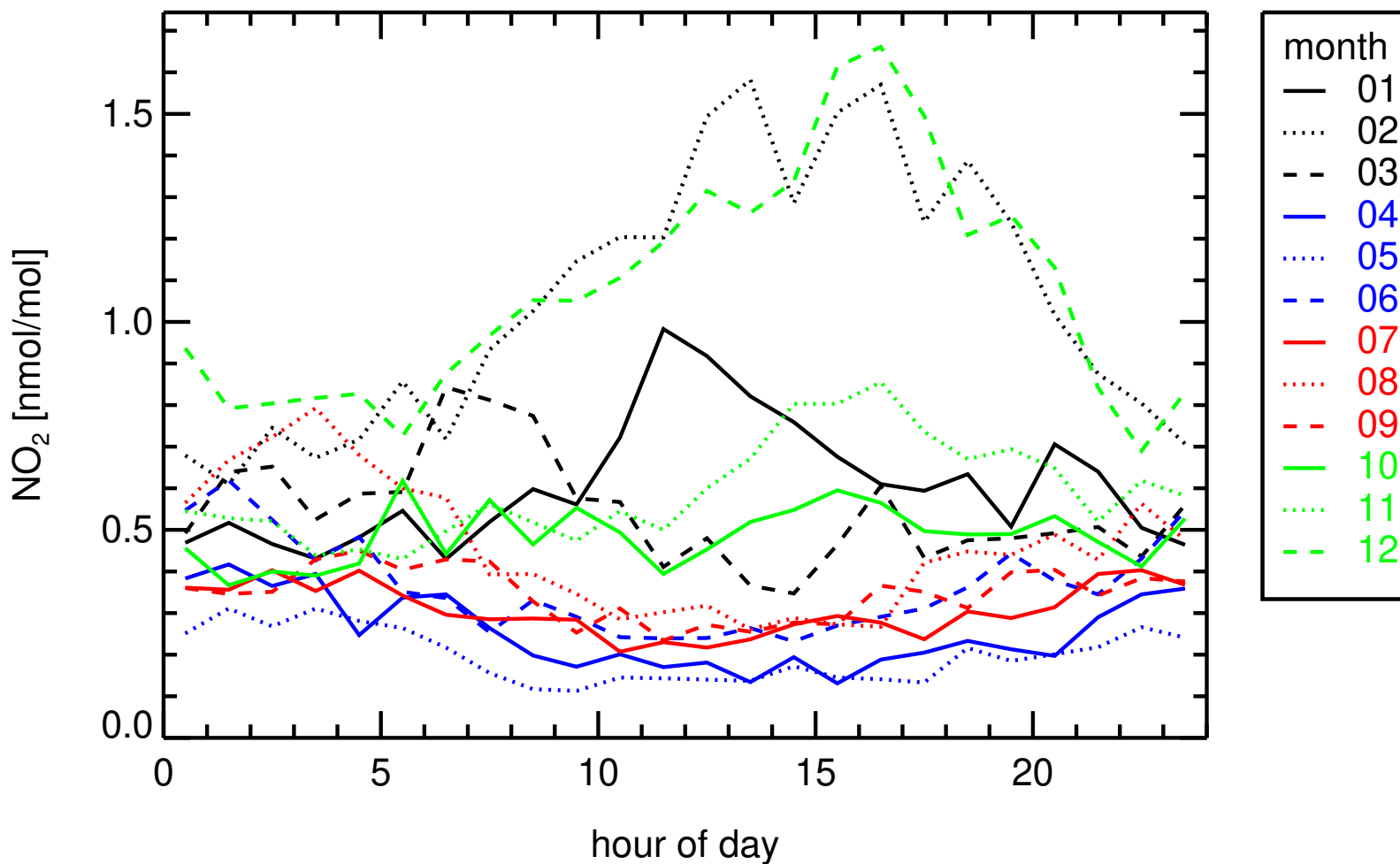


monthly medians
FI0050R , Hyytiaelae



hourly medians 2022

FI0050R , Hyytiaelae



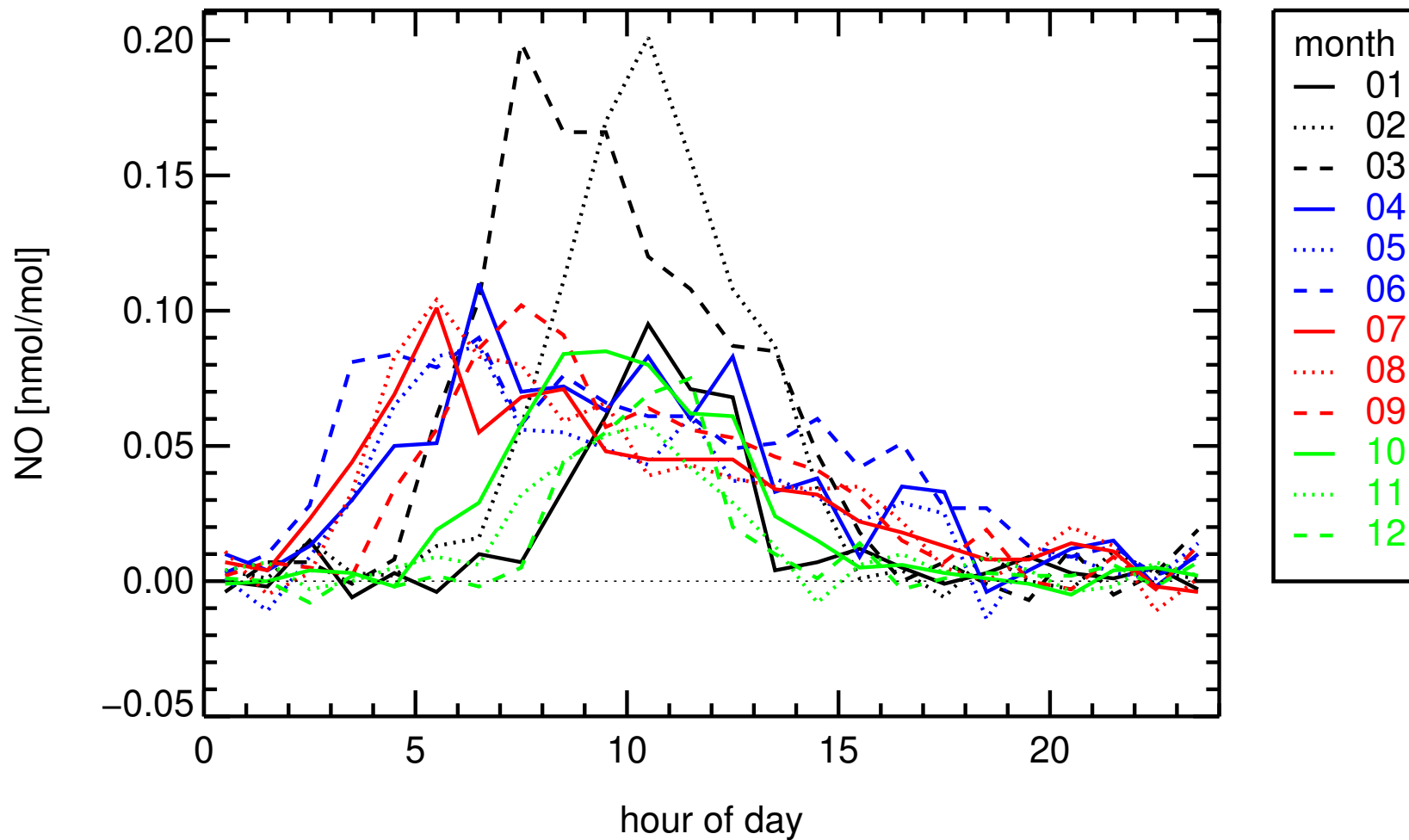
ACTRIS DATA WS 2022/04/28

19 / 21

ACTRIS DATA WS 2023/04/19

19 / 21

hourly medians 2022
FI0050R , Hyytiaelae



hourly medians 2022
FI0050R , Hyytiaelae

